

Legend

- Climate Stations
- Isolines (°C)
- Temperature (°C)**
- High : 8
- Low : 5

Map 3.1

Mean Annual Temperature (1971-2000)

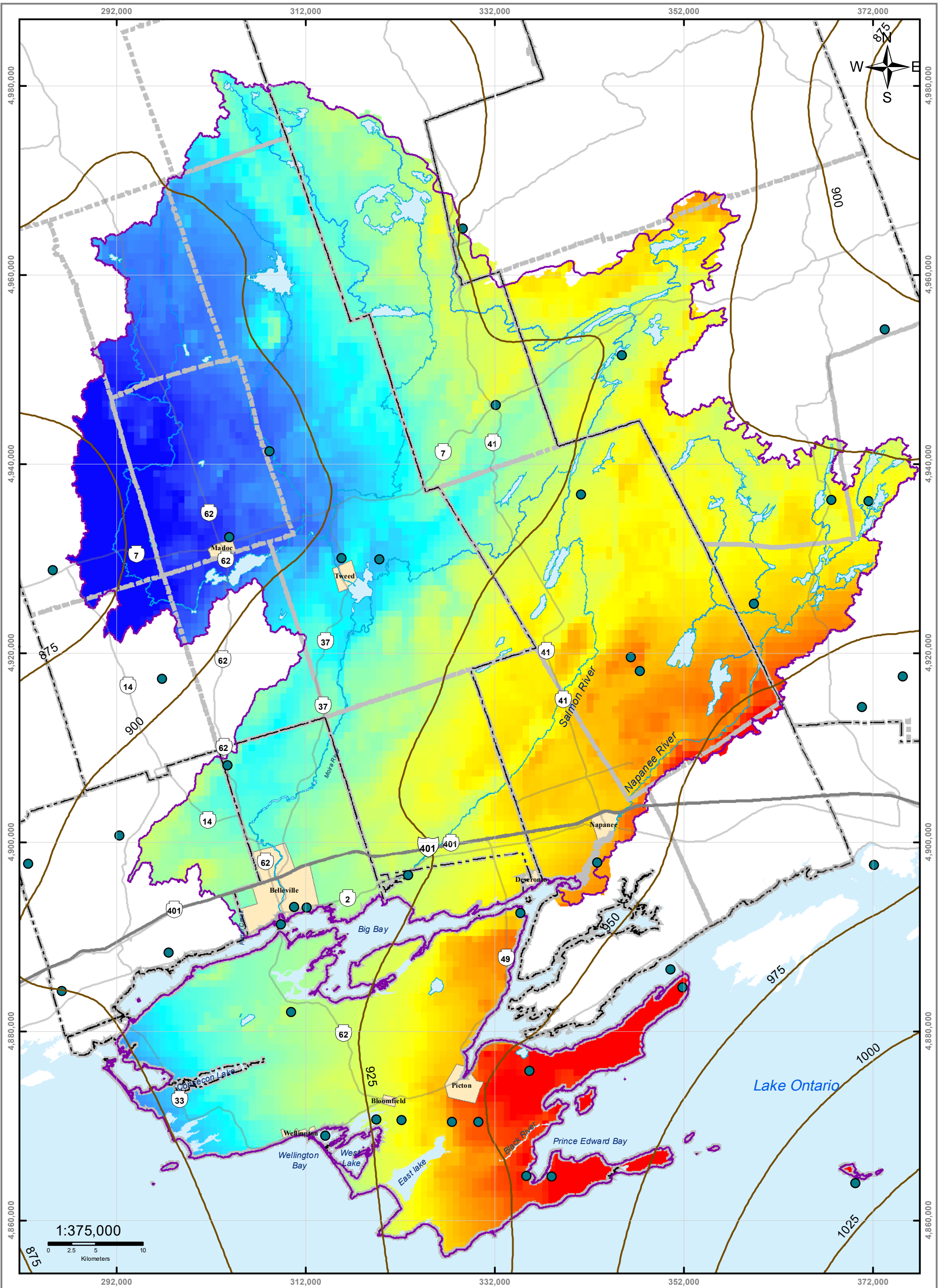


Moira River, Napanee Region and Prince Edward Region Watersheds.
 RR #2, 2061 Old Highway # 2, Belleville, Ontario, K8N 4Z2.
 www.quinteconservation.ca, 613-968-3434

Produced by Quinte Conservation under license with the
 Ontario Ministry of Natural Resources. Copyright Quinte Conservation and
 the King's Printer for Ontario, 2023. Data is projected in NAD 83
 UTM Zone 18N.

Digital Mapping Sources:
 Base Map - Ontario Ministry of Natural Resources
 Temperature - Waterloo Hydrogeologic Inc.

This map for illustrative purposes only. QC makes no warranties and assumes no liability
 whatsoever regarding the truth, accuracy, currency, or completeness of the data.



Legend

- Climate Stations
- Precipitation Isolines (25mm)
- Highway 401
- Rivers
- Lakes
- Precipitation (mm)**
- High : 1021
- Low : 857

Map 3.2

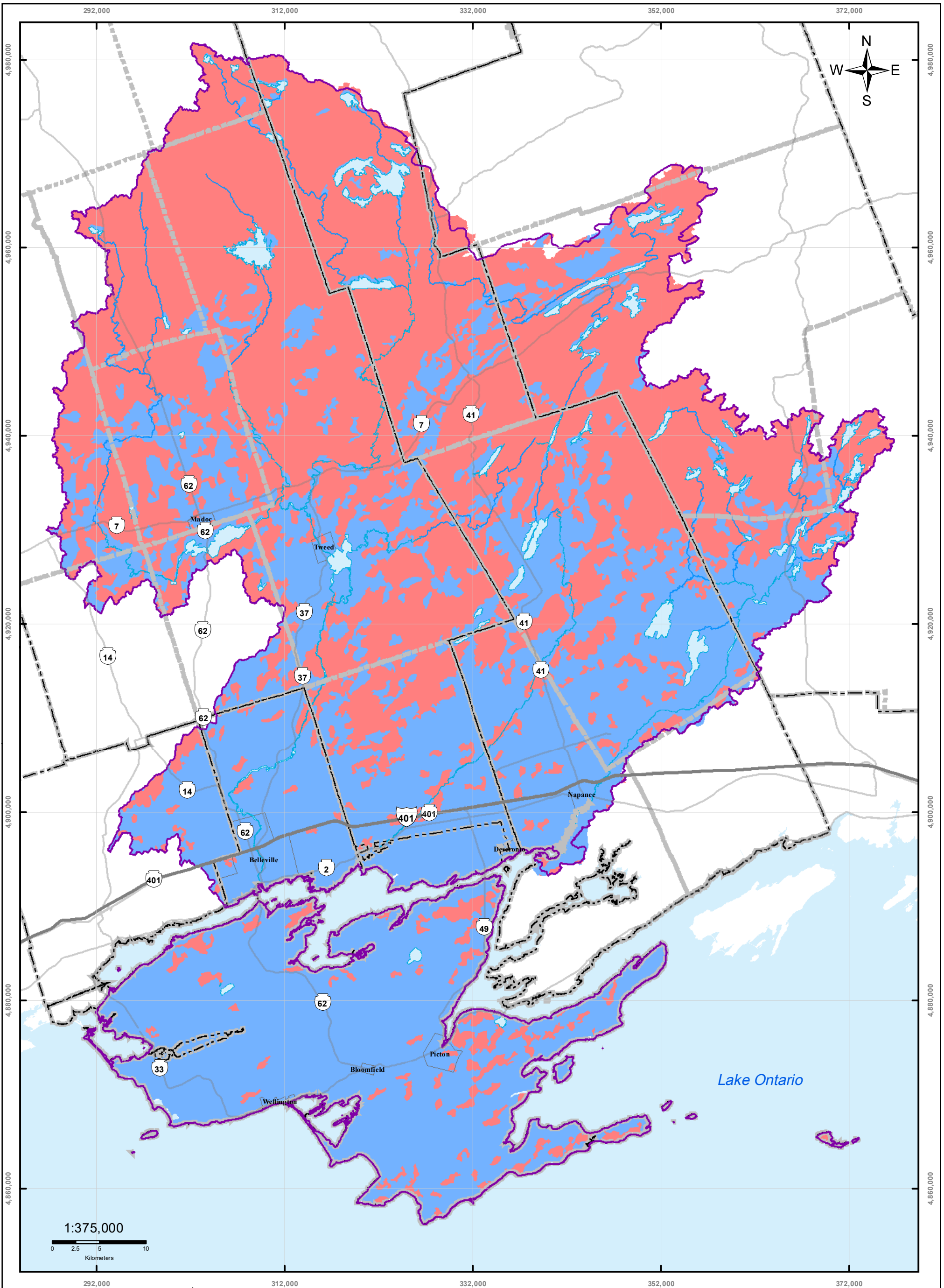
Mean Annual Precipitation (1971-2000)



Moira River, Napanee Region and Prince Edward Region Watersheds.
RR #2, 2061 Old Highway # 2, Belleville, Ontario, K8N 4Z2.
www.quinteconservation.ca, 613-968-3434

Produced by Quinte Conservation under license with the Ontario Ministry of Natural Resources. Copyright Quinte Conservation and the King's Printer for Ontario, 2023. Data is projected in NAD 83 UTM Zone 18N.

Digital Mapping Sources:
Base Map - Ontario Ministry of Natural Resources
Precipitation - Waterloo Hydrogeologic Inc.
This map is for illustrative purposes only. QC makes no warranties and assumes no liability whatsoever regarding the truth, accuracy, currency, or completeness of the data.



Legend

- Highway 401
- Highways
- Rivers
- Lakes
- Populated Areas
- Quinte Watershed Area
- Low Land Cover (0.1)
- High Land Cover (0.2)



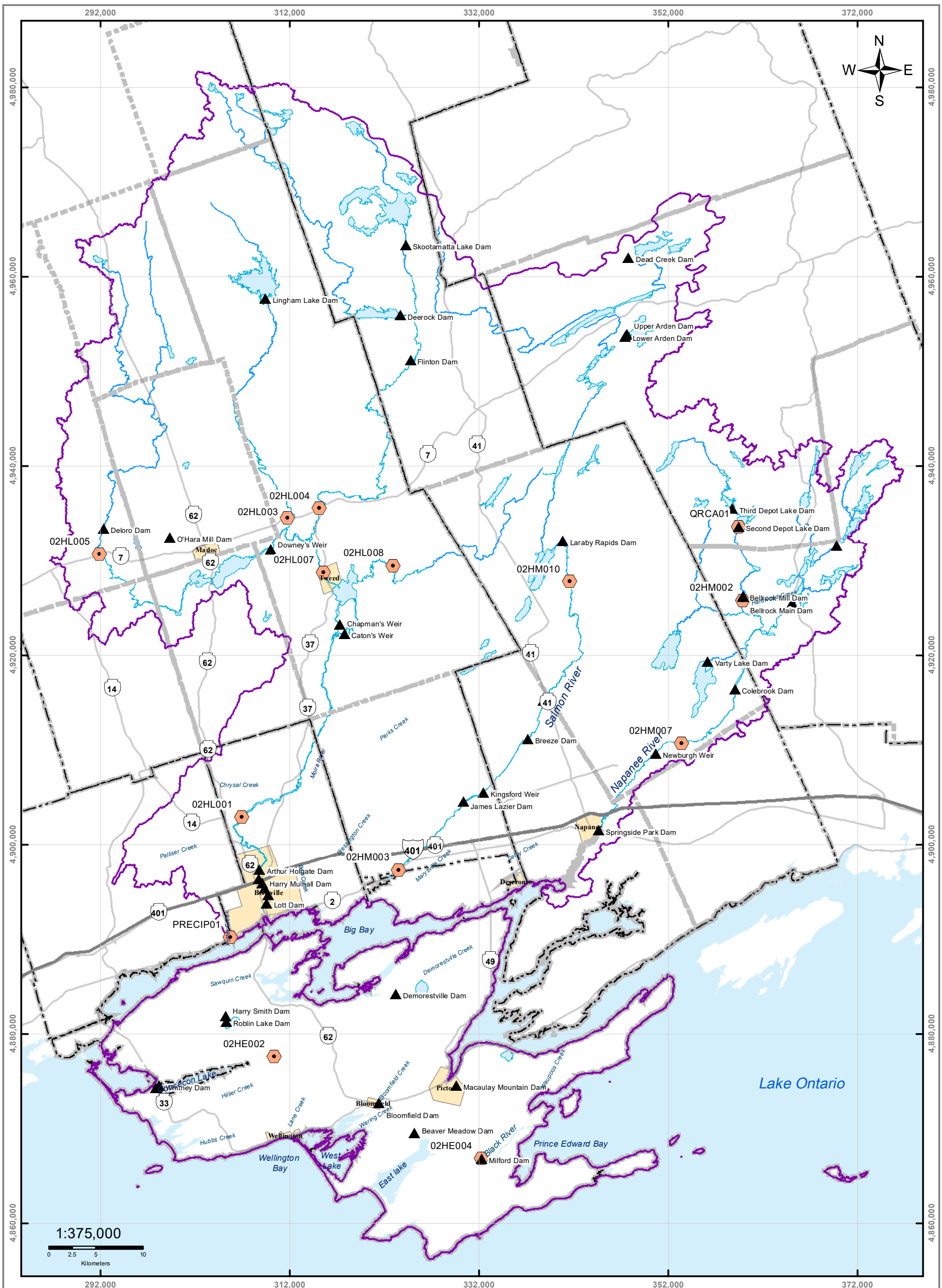
Maize River, Napanee Region and Prince Edward Region Watersheds.
 RR #2, 2061 Old Highway # 2, Belleville, Ontario, K8N 4Z2.
 www.quinteconservation.ca, 613-968-3434

Produced by Quinte Conservation under license with the
 Ontario Ministry of Natural Resources. Copyright Quinte Conservation and
 the King's Printer for Ontario, 2023. Data is projected in NAD 83
 UTM Zone 18N.

Digital Mapping Sources:
 Base Map - Ministry of Natural Resources
 Land Cover - Waterloo Hydrogeologic Inc.

This map is for illustrative purposes only. QC makes no warranty, and assumes no liability whatsoever regarding the truth,
 accuracy, currency, or completeness of data in use on this map or its associated data.


Map 3.3 Land Cover Classes



Legend

- ▲ Quinte Conservation Dams
- Stream Gauge Stations
- Highway 401
- Highways
- Rivers
- Lakes
- Populated Areas
- Quinte Watershed Area

Map 3.4 Dam Locations & Stream Gauge Stations

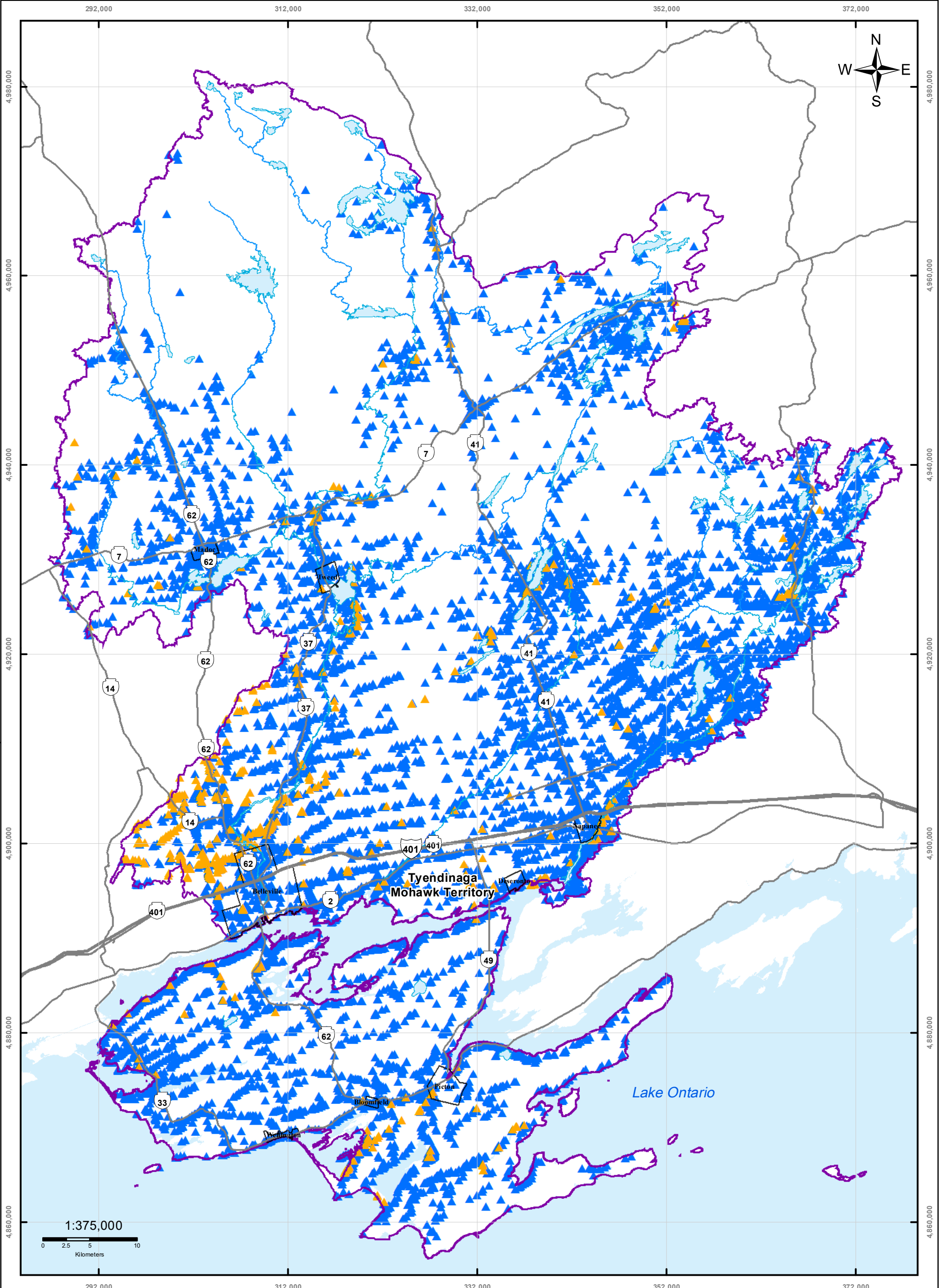



Moira River, Napanee Region and Prince Edward Region Watersheds.
RR #2, 2061 Old Highway # 2, Belleville, Ontario, K8N 4Z2.
www.quinteconservation.ca, 613-968-3434

Produced by Quinte Conservation under license with the Ontario Ministry of Natural Resources. Copyright Quinte Conservation and the King's Printer for Ontario, 2023. Data is projected in NAD 83 UTM Zone 18N.

Digital Mapping Sources:
Base Map - Ontario Ministry of Natural Resources

This map is for illustrative purposes only. QC makes no warranties and assumes no liability whatsoever regarding the truth, accuracy, currency, or completeness of the data.

Moira River, Napanee Region and Prince Edward Region Watersheds.
 RR # 2, 2061 Old Highway # 2, Belleville, Ontario, K8N 4Z2.
 www.quintecoconservation.ca, 613-968-3434

Produced by Quinte Conservation under license with the
 Ontario Ministry of Natural Resources. Copyright Quinte Conservation and
 the King's Printer for Ontario, 2023. Data is projected in NAD 83
 UTM Zone 18N.

Digital Mapping Sources:
 Base Map - Ministry of Natural Resources
 Soil Data - Ministry of Natural Resources

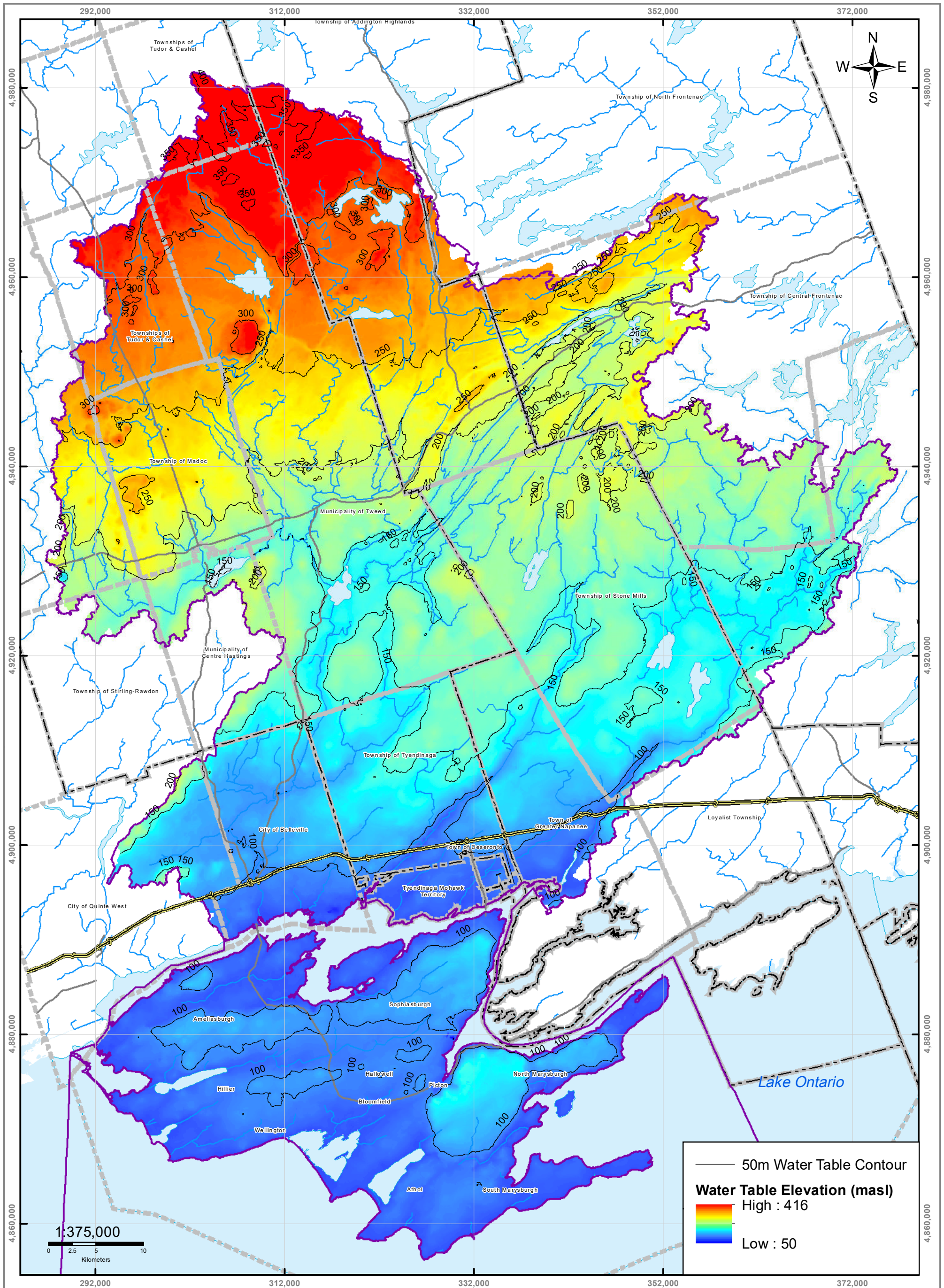
This map is for illustrative purposes only. QC makes no warranties and assumes no liability whatsoever regarding the truth, accuracy, agency or completeness of the map and its associated data.

Legend

- ▲ Overburden Wells
- ▲ Bedrock Wells
- Highway 401
- Highways
- Rivers
- Lakes
- Quinte Watershed

Map 3.5 Water Well Locations*

*Only water wells with reliable UTM coordinates displayed on the map



— 50m Water Table Contour

Water Table Elevation (masl)

High : 416

Low : 50

Legend

- Highway 401
- Rivers
- Quinte Watershed Area
- Highways
- Lakes



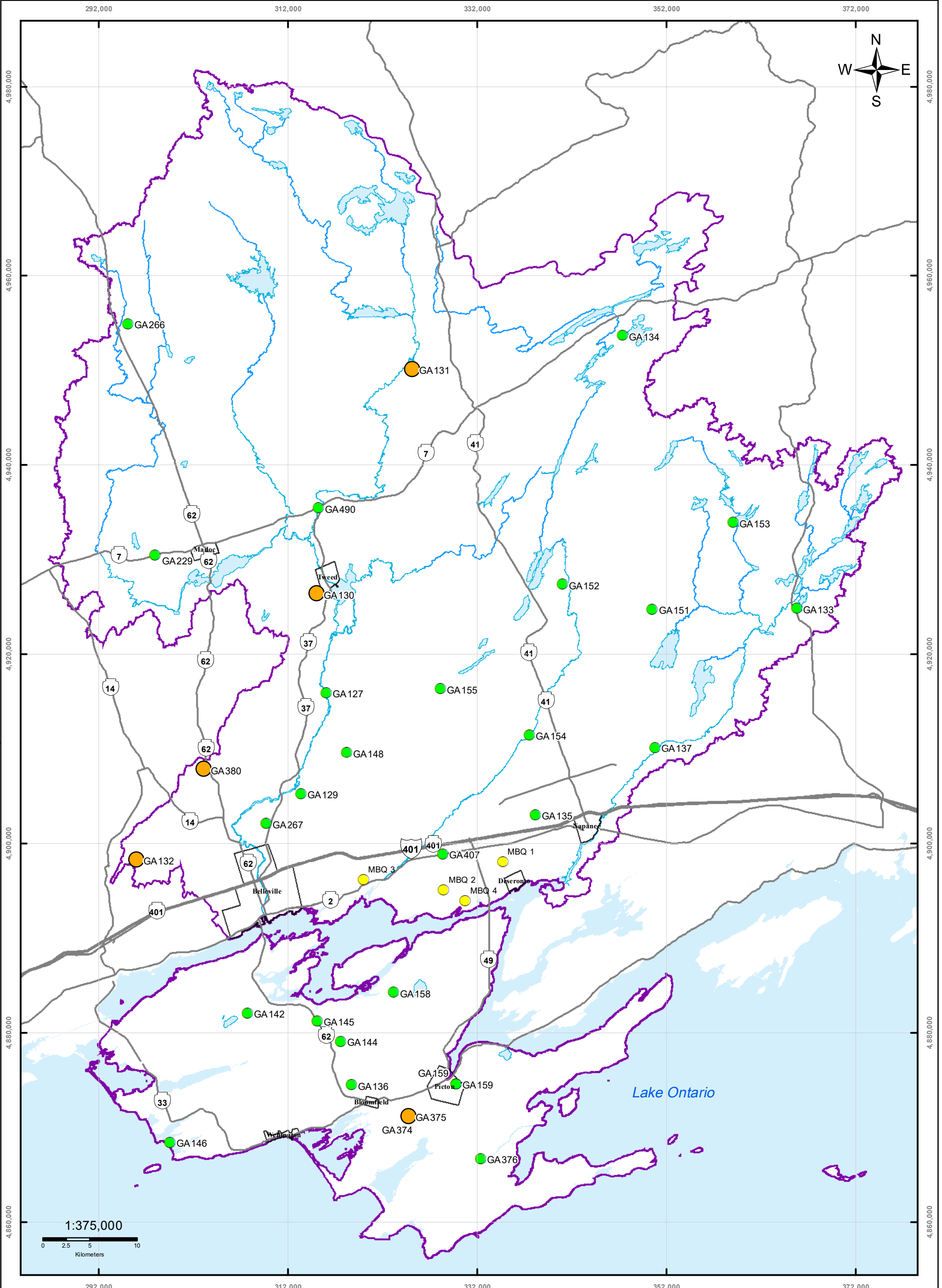
Moira River, Napanee Region and Prince Edward Region Watersheds.
RR #2, 2061 Old Highway # 2, Belleville, Ontario, K8N 4Z2.
www.quinteconservation.ca, 613-968-3434

Produced by Quinte Conservation under license with the Ontario Ministry of Natural Resources. Copyright Quinte Conservation and the King's Printer for Ontario, 2023. Data is projected in NAD 83 UTM Zone 18N.

Digital Mapping Sources:
Base Map - Ontario Ministry of Natural Resources
Water Table Elevation - Dillon Consulting

This map is for illustrative purposes only. QC makes no warranties and assumes no liability whatsoever regarding the truth, accuracy, currency, or completeness of the data.

Map 3.6 Water Table Elevation



Legend

- PGMN Wells
- PGMN Wells in SGRAs
- Mohawk Monitoring Wells
- Highway 401
- Highways
- Rivers
- Lakes
- Quinte Watershed
- Populated Areas

Map 3.7 Quinte Monitoring Wells

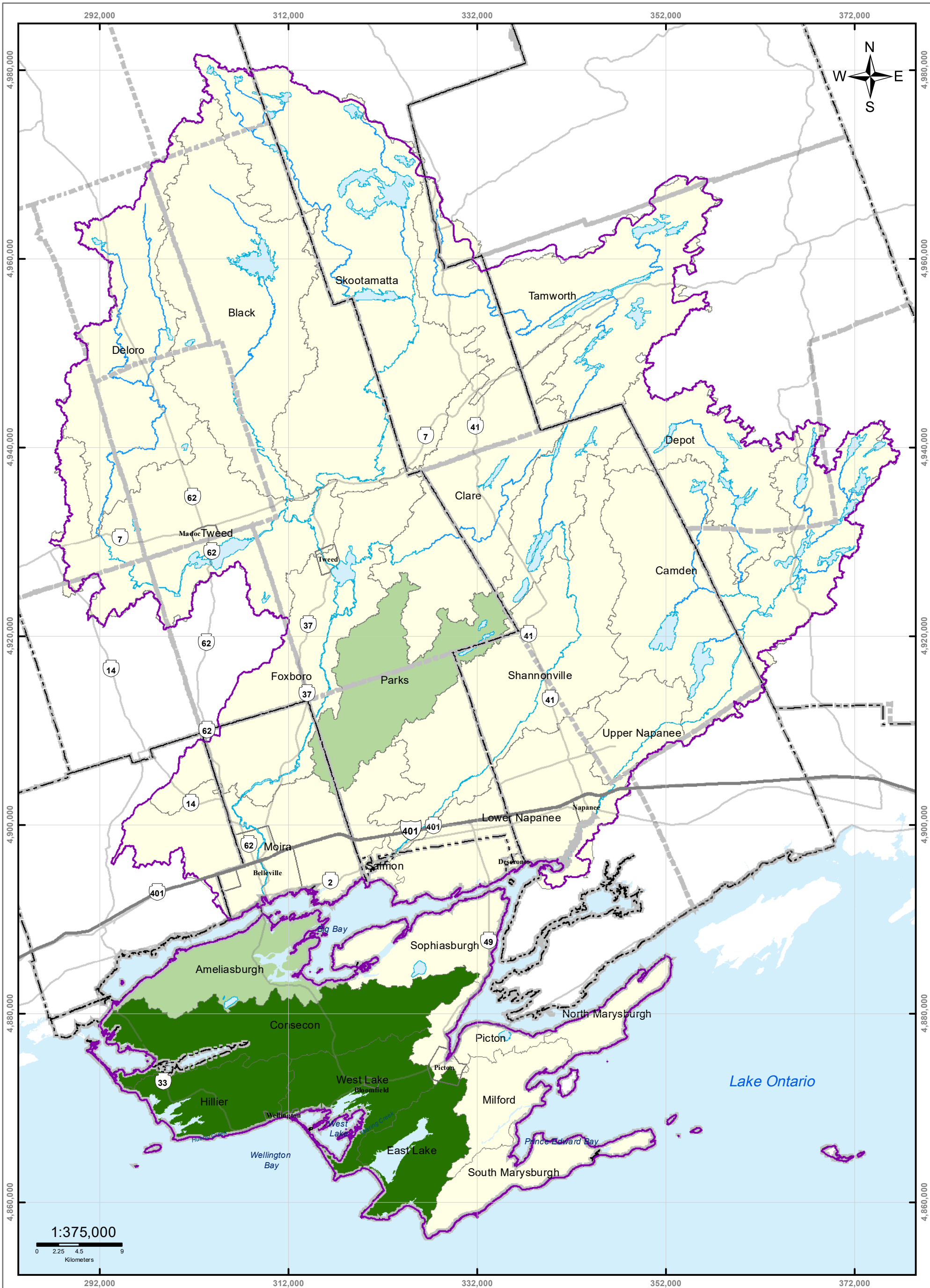


Moira River, Napanee Region and Prince Edward Region Watersheds.
RR # 2, 2061 Old Highway # 2, Belleville, Ontario, K8N 4Z2.
www.quintecconservation.ca, 613-968-3434

Produced by Quinte Conservation under license with the
Ontario Ministry of Natural Resources. Copyright Quinte Conservation and
the King's Printer for Ontario, 2023. Data is projected in NAD 83
UTM Zone 18N.

Digital Mapping Sources:
Base Map - Ministry of Natural Resources
Soil Data - Ministry of Natural Resources

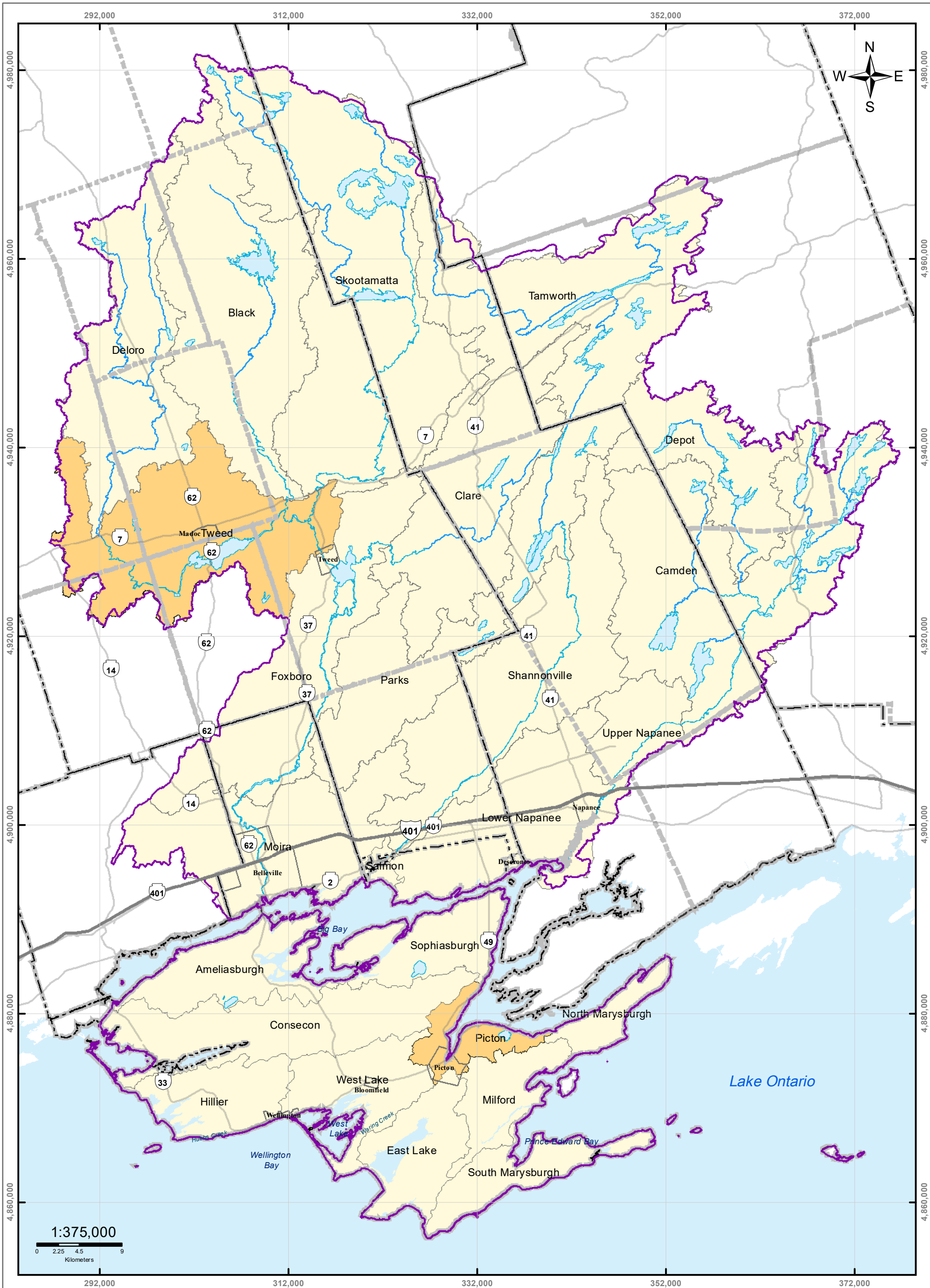
This map is for illustrative purposes only. QC makes no warranties and assumes no liability whatsoever regarding the truth, accuracy, agency or completeness of the map and its associated data.



Legend

- Highway 401
- Rivers
- Highways
- Lakes
- Potential Stress**
- Low
- Moderate
- Significant

Map 3.8 Potential Surface Water Stress



Legend

- Highway 401
- Rivers
- Highways
- Lakes
- Potential Stress**
- Low
- Moderate

Map 3.9 Potential Groundwater Stress



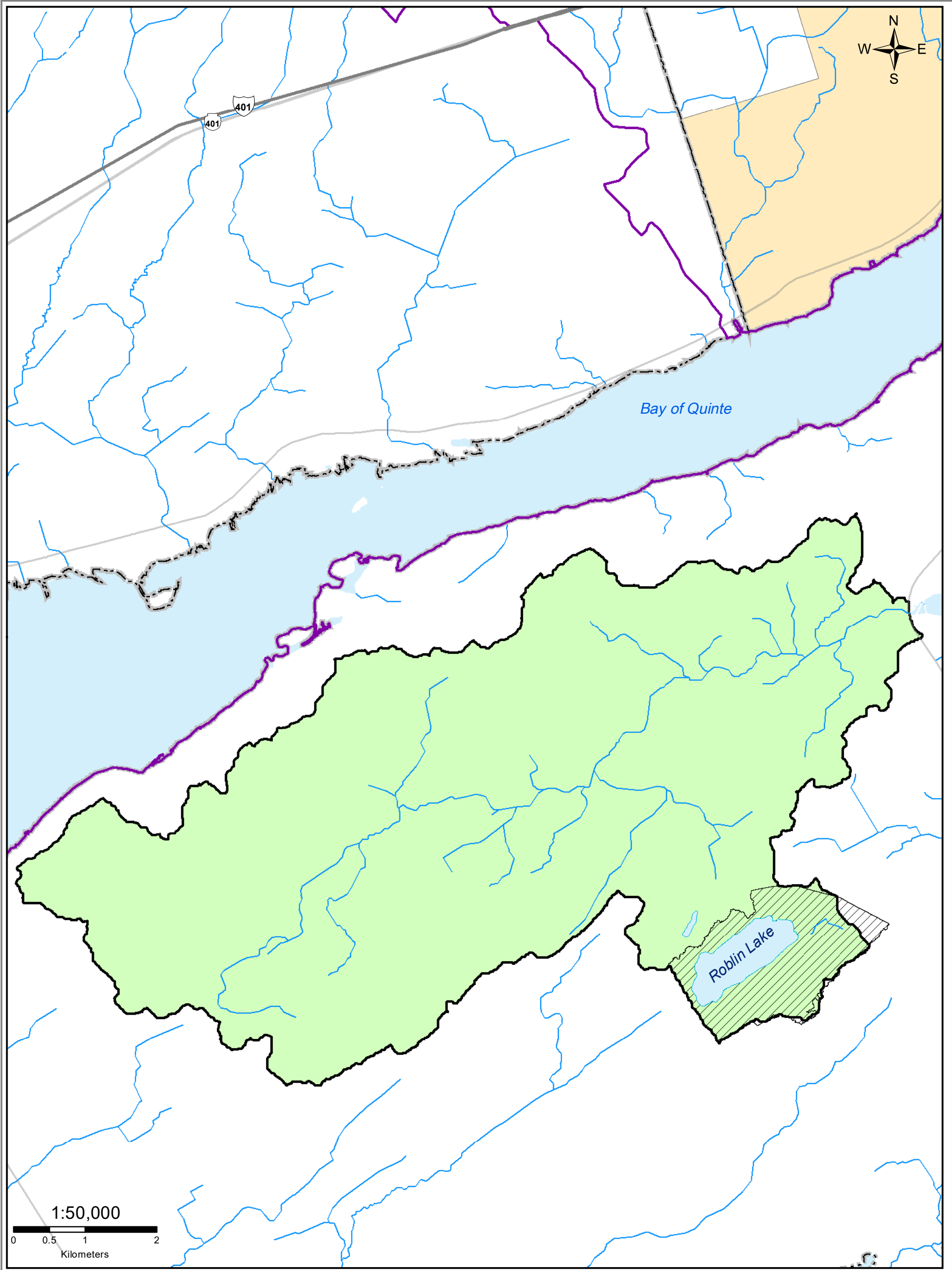

Moira River, Napanee Region and Prince Edward Region Watersheds.
 RR #2, 2061 Old Highway #2, Belleville, Ontario, K8N 4Z2.
 www.quinteconservation.ca, 613-968-3434

Produced by Quinte Conservation under license with the Ontario Ministry of Natural Resources. Copyright Quinte Conservation and the King's Printer for Ontario, 2023. Data is projected in NAD 83 UTM Zone 18N.

Digital Mapping Sources:
 Base Map - Ontario Ministry of Natural Resources

This map is for illustrative purposes only. QC makes no warranties and assumes no liability whatsoever regarding the truth, accuracy, currency, or completeness of the data.

Y:\WP\Data_Media\MLT_AR\Report_Final_V1_2010\Map3_9_Potential_Groundwater_Stress_2023.mxd

**Quinte
CONSERVATION**

Moira River, Napanee Region and Prince Edward Region Watersheds.
RR # 2, 2061 Old Highway # 2, Belleville, Ontario, K8N 4Z2.
www.quinteconservation.ca, 613-968-3434

Produced by Quinte Conservation under license with the
Ontario Ministry of Natural Resources. Copyright Quinte Conservation and
the King's Printer for Ontario, 2023. Data is projected in NAD 83
UTM Zone 18N.

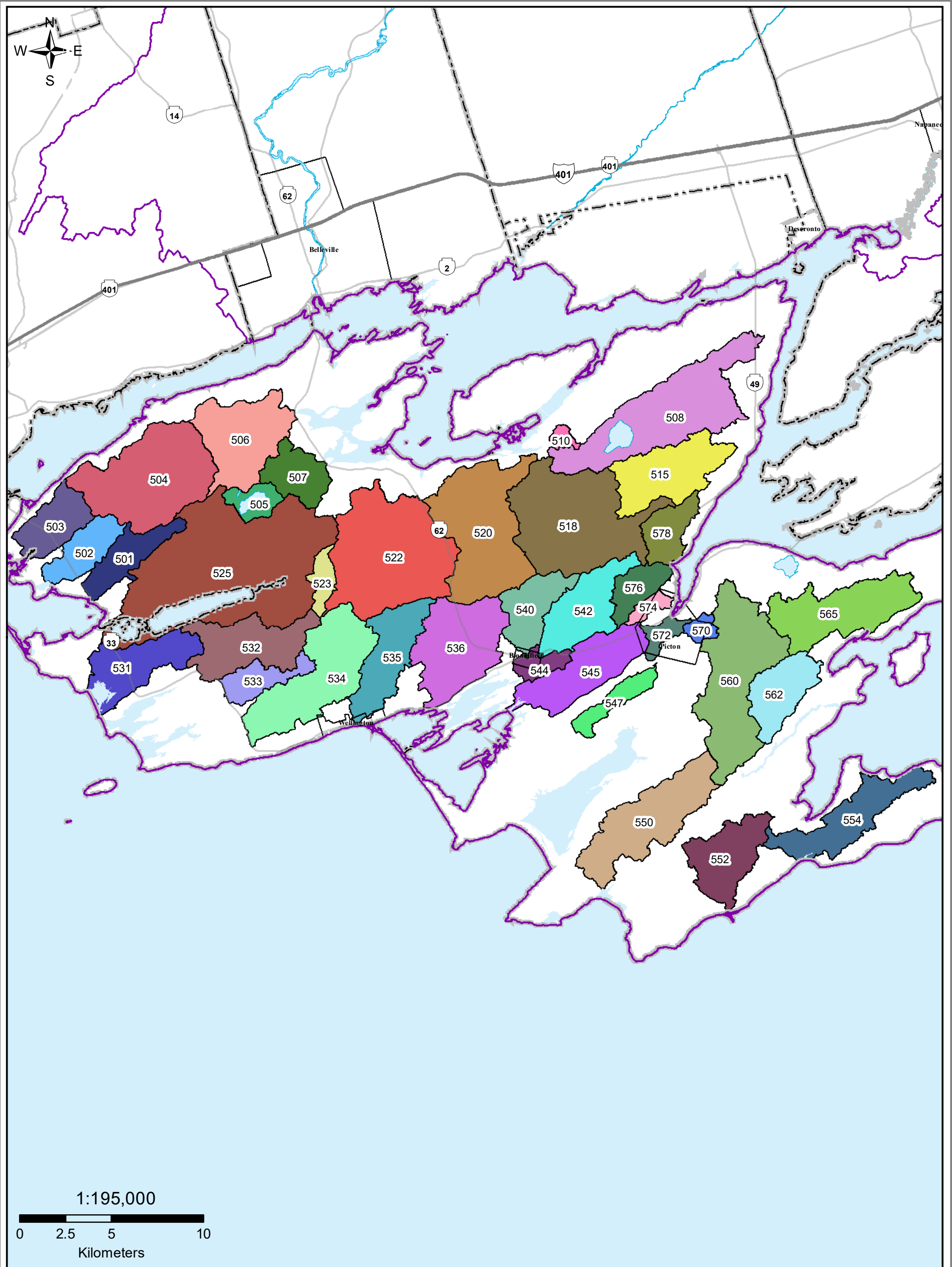
Digital Mapping Sources:
Base Map - Ontario Ministry of Natural Resources


This map is for illustrative purposes only. QC makes no warranty and assumes no liability whatsoever regarding the truth,
accuracy, currency or completeness of this map or the associated data.

Legend

- Highway 401 — Rivers — Populated Areas — Sawguin Creek Drainage Area
- Highways — Lakes — Roblin Lake Watershed — Quinte Watershed Area

Map 3.10 Ameliasburgh Tier Two Study Area




Quinte CONSERVATION




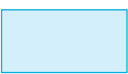
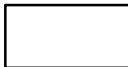
Moira River, Napanee Region and Prince Edward Region Watersheds.
 RR # 2, 2061 Old Highway # 2, Belleville, Ontario, K8N 4Z2.
 www.quinteconservation.ca, 613-968-3434

Produced by Quinte Conservation under license with the Ontario Ministry of Natural Resources. Copyright Quinte Conservation and the King's Printer for Ontario, 2023. Data is projected in NAD 83 UTM Zone 18N.

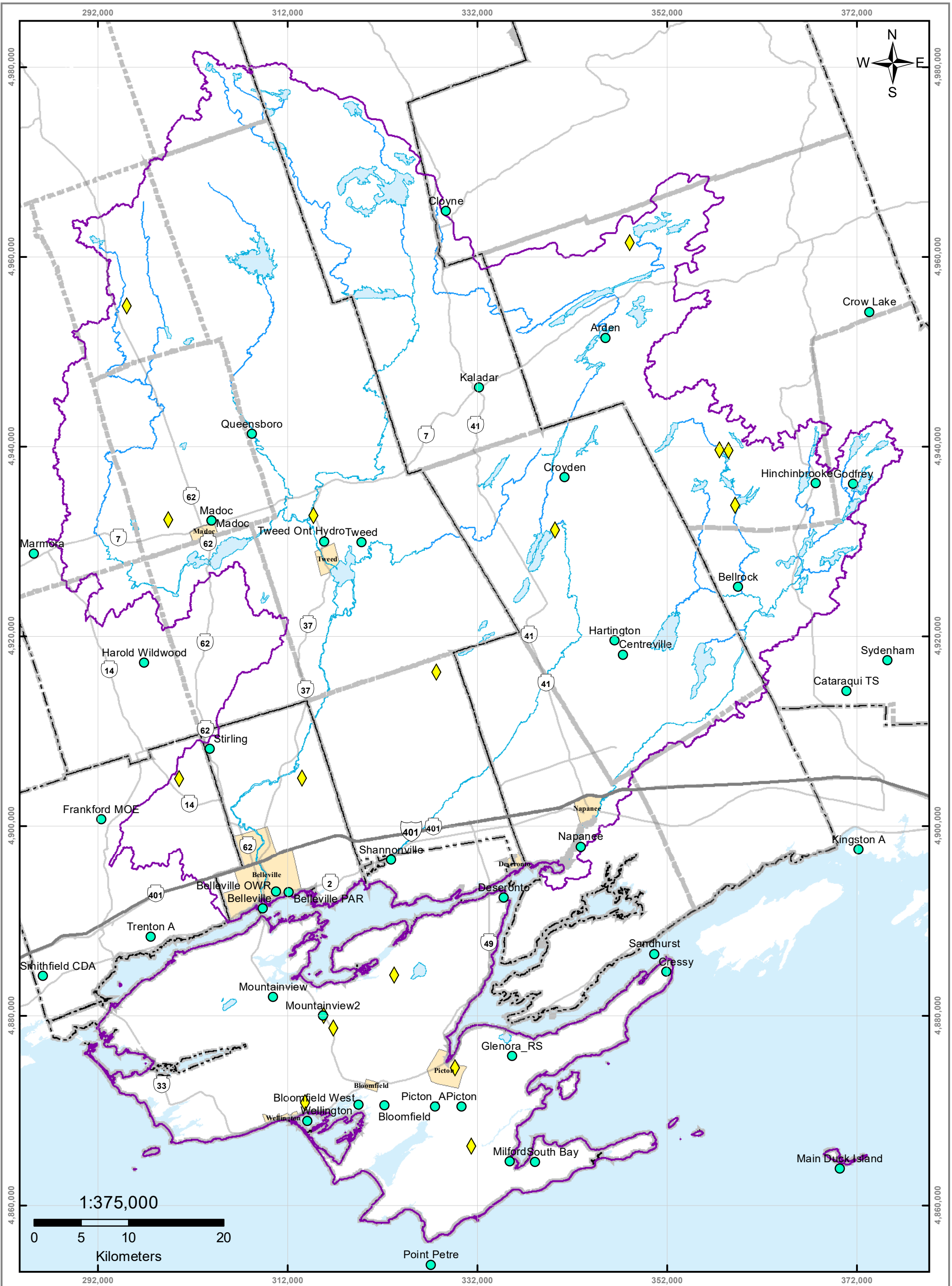
Digital Mapping Sources:
 Base Map - Ontario Ministry of Natural Resources

This map is for illustrative purposes only. QC makes no warranty and assumes no liability whatsoever regarding the truth, accuracy, currency or completeness of this map or the associated data.

Legend

-  Highway 401
-  Highways
-  Rivers
-  Lakes
-  Populated Areas

Map 3.11
Prince Edward County Subcatchments for Surface Water Model



Legend

- Meteorological Stations
- ◆ Snow Survey Sites
- Highway 401
- Highways
- Rivers
- Lakes
- Populated Areas

Map 3.12 Quinte Area Meteorological Stations



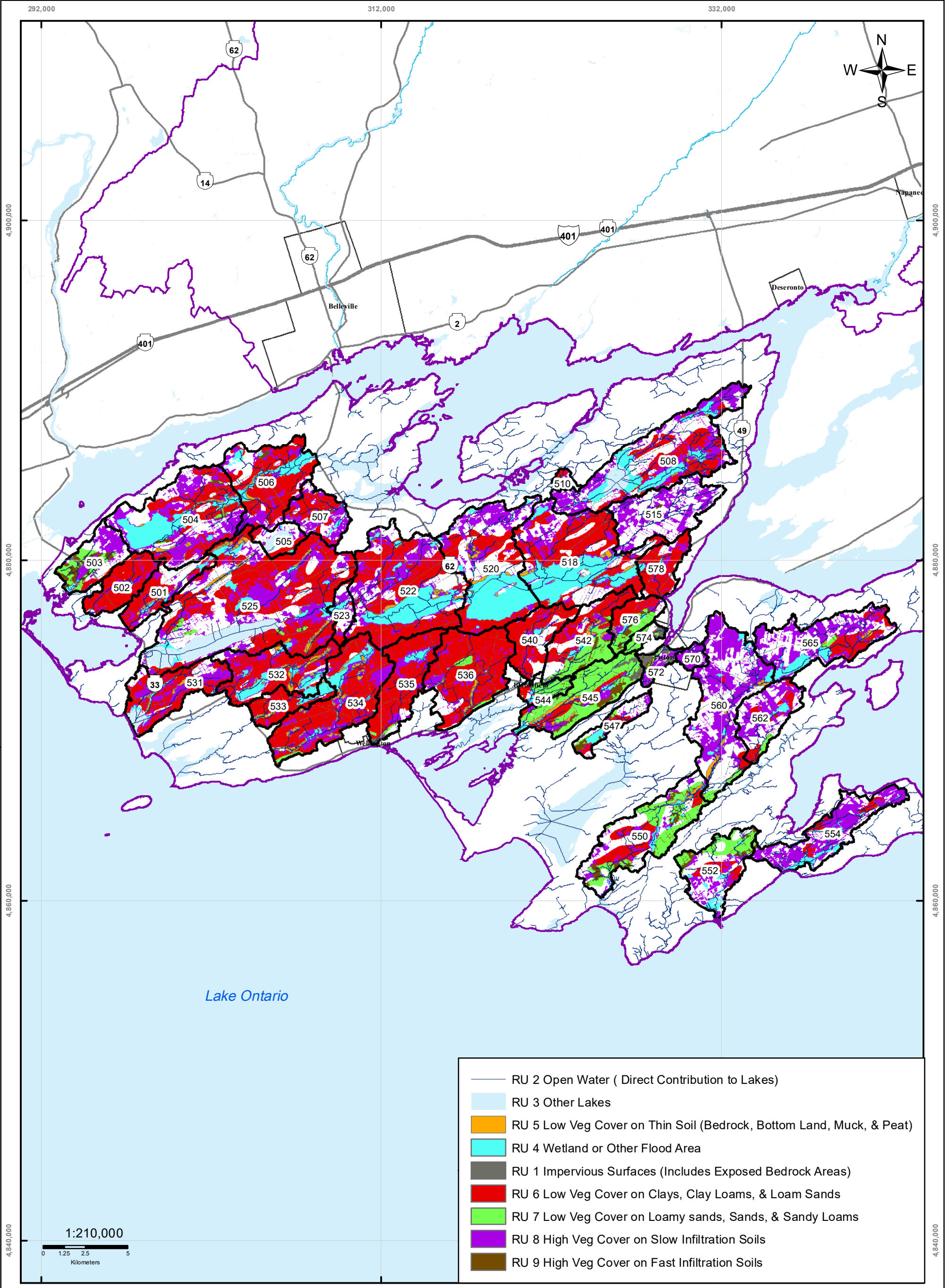
**Quinte
CONSERVATION**

Moira River, Napanee Region and Prince Edward Region Watersheds.
RR # 2, 2061 Old Highway # 2, Belleville, Ontario, K8N 4Z2.
www.quinteconservation.ca, 613-968-3434

Produced by Quinte Conservation under license with the
Ontario Ministry of Natural Resources. Copyright Quinte Conservation and
the King's Printer for Ontario, 2023. Data is projected in NAD 83
UTM Zone 18N.

Digital Mapping Sources:
Base Map - Ontario Ministry of Natural Resources
Meteorological Stations - Environment Canada

This map is for illustrative purposes only. QC makes no warranty and assumes no liability whatsoever regarding the truth, accuracy, currency or completeness of this map or the associated data.



Quinte CONSERVATION

Moira River, Napanee Region and Prince Edward Region Watersheds.
 RR # 2, 2061 Old Highway # 2, Belleville, Ontario, K8N 4Z2.
 www.quintecconservation.ca, 613-968-3434

Produced by Quinte Conservation under license with the
 Ontario Ministry of Natural Resources. Copyright Quinte Conservation and
 the King's Printer for Ontario, 2023. Data is projected in NAD 83
 UTM Zone 18N.

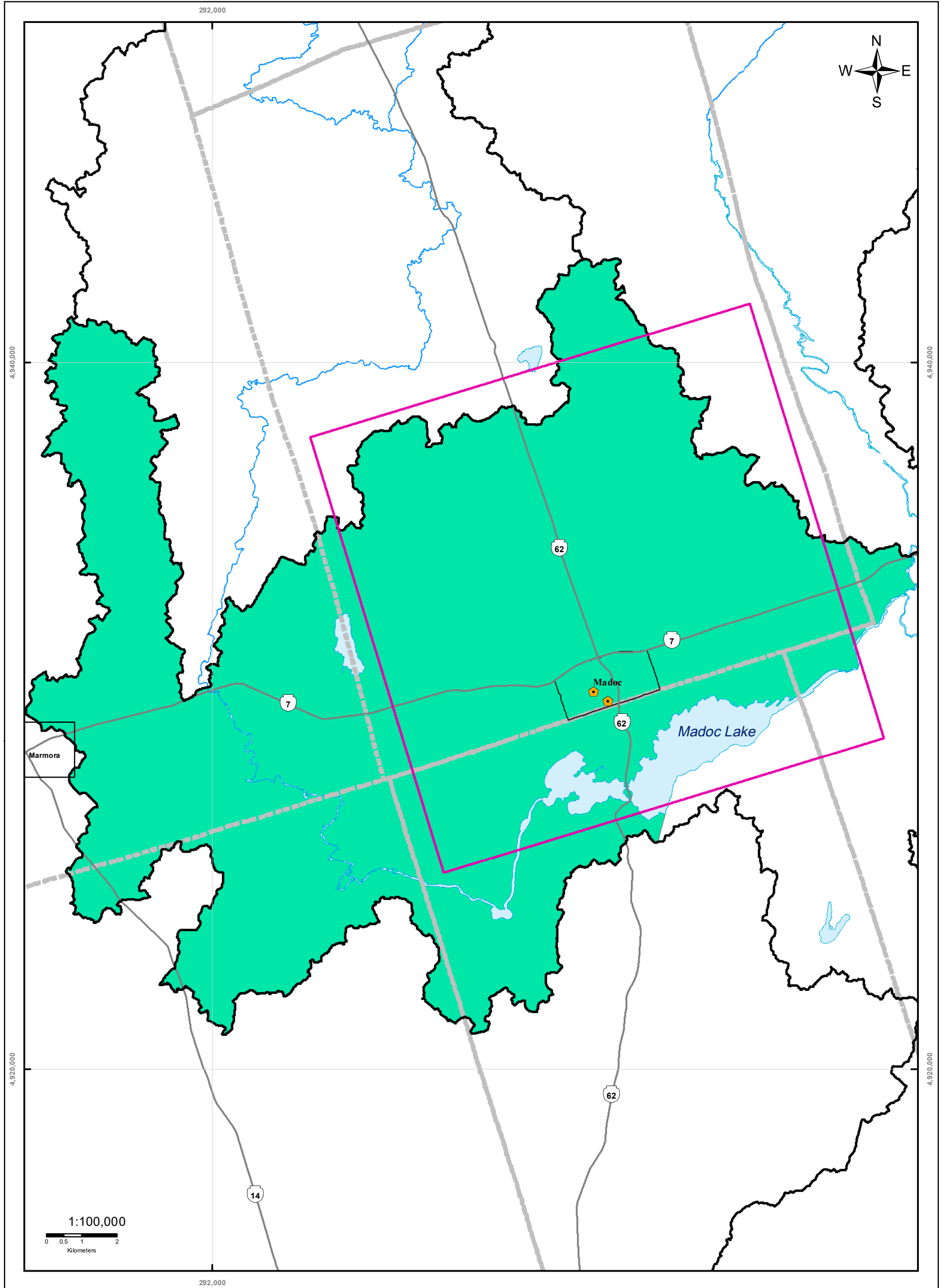
Digital Mapping Sources:
 Base Map - Ministry of Natural Resources
 Soil Data - Ministry of Natural Resources

This map is for illustrative purposes only. QC makes no warranties and assumes no liability whatsoever regarding the truth, accuracy, or completeness of the map and its associated data.

Legend

- Highway 401
- Rivers
- Quinte Watershed
- Highways
- PEC Subcatchments

**Map 3.13
 Hydrologic Response Units for Prince Edward County**



Legend

- Municipal Wells
- Rivers
- New Groundwater Model Area
- Highways
- Lakes
- Dillon Groundwater Model Area



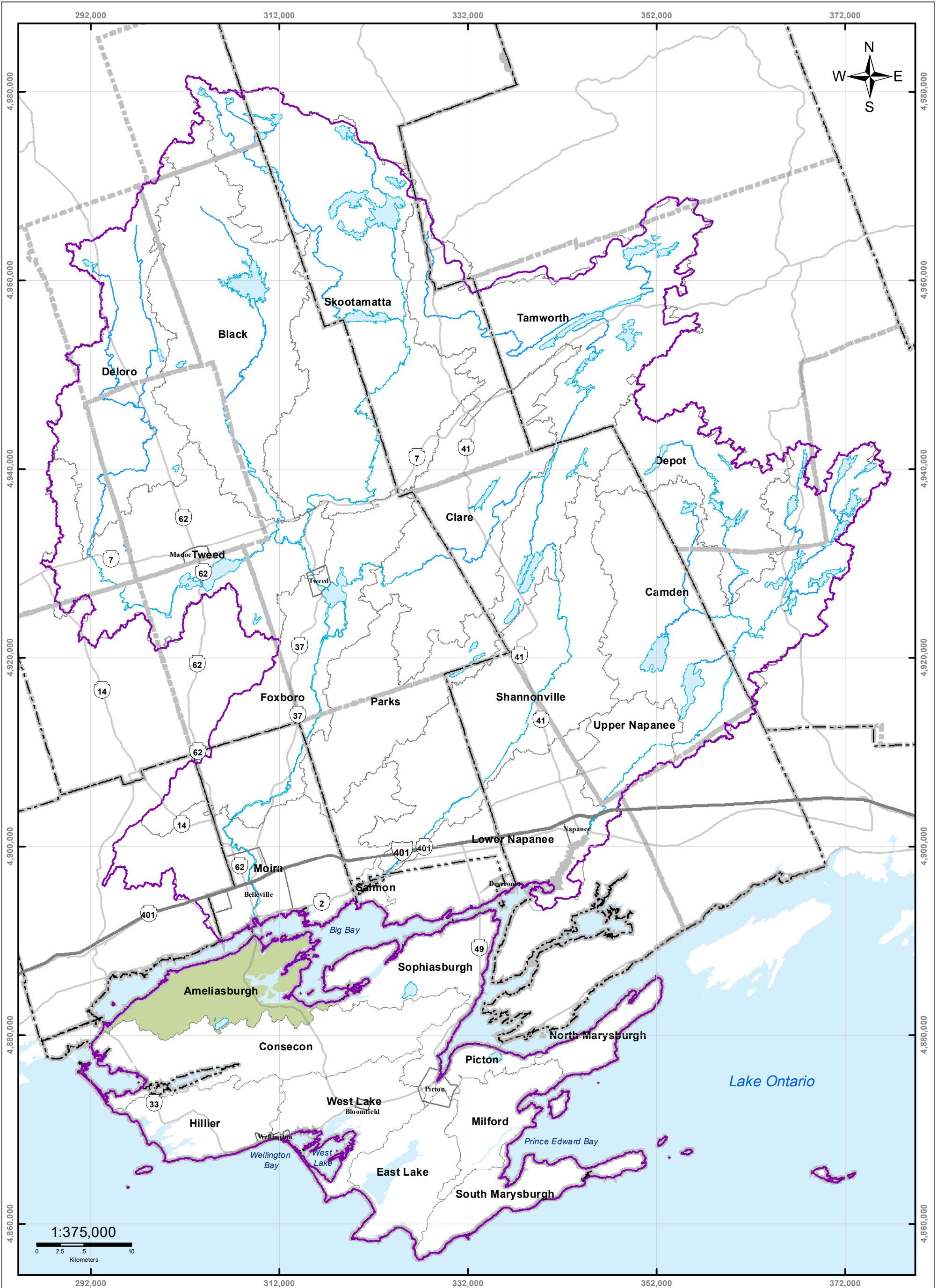
Moira River, Napanee Region and Prince Edward Region Watersheds.
RR # 2, 2061 Old Highway # 2, Belleville, Ontario, K8N 4Z2.
www.quintecconservation.ca, 613-968-3434

Produced by Quinte Conservation under license with the
Ontario Ministry of Natural Resources. Copyright Quinte Conservation and
the King's Printer for Ontario, 2023. Data is projected in NAD 83
UTM Zone 18N.

Digital Mapping Sources:
Base Map - Ministry of Natural Resources
Soil Data - Ministry of Natural Resources

This map is for illustrative purposes only. QC makes no warranties and assumes no liability whatsoever regarding the truth, accuracy,
agency or completeness of the map and its associated data.

Map 3.14 Groundwater Model Study Area



Legend

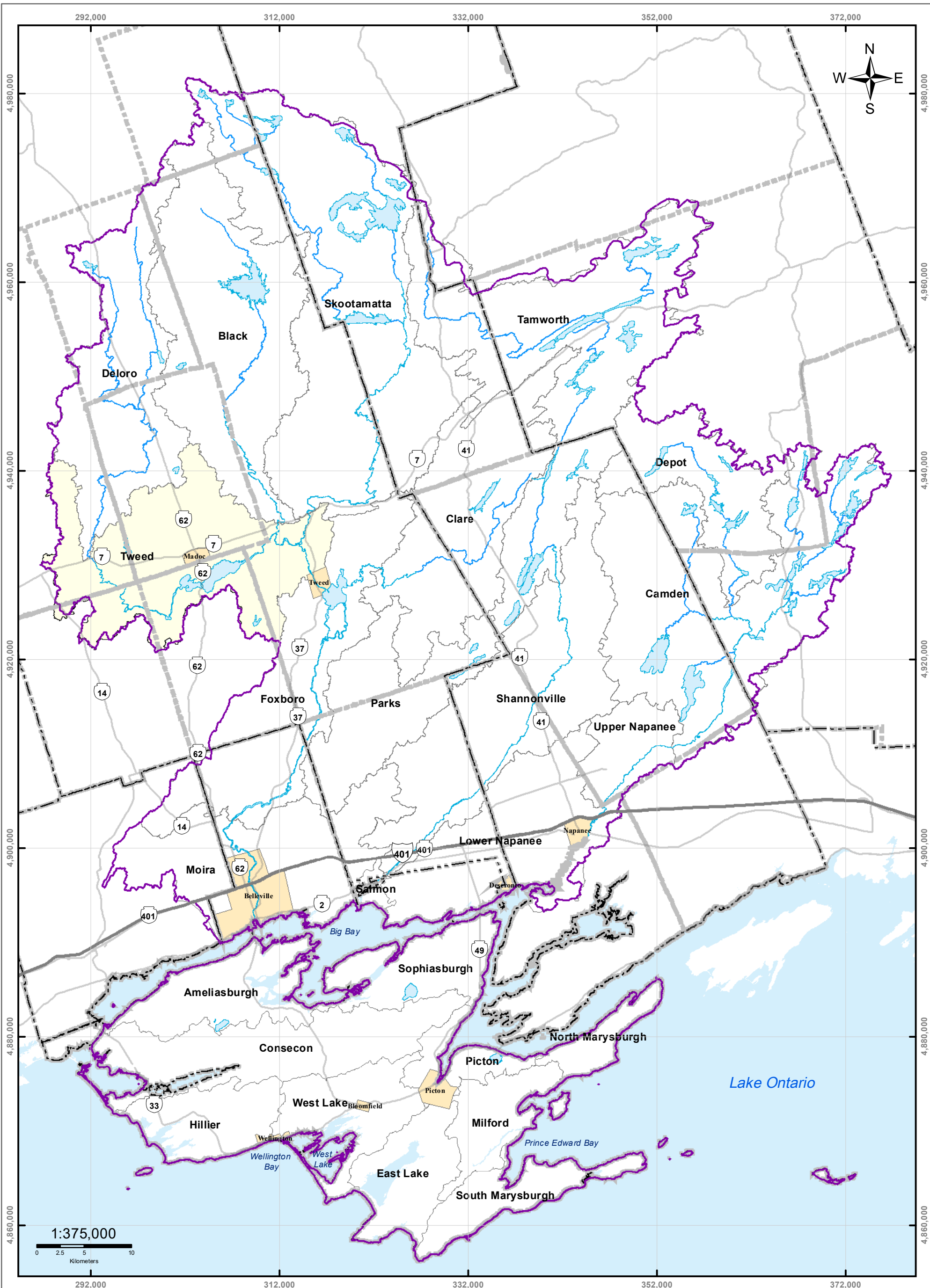
- Highway 401
- Highways
- Rivers
- Lakes
- Potential Stress
- Tier 1 Evaluated
- Low

Map 3.15 Tier 2 Potential Surface Water Stress

Y:\MWP_Data_Media\MWP_AIRReport_Final_v1_2010\AIRMap3_15_T2_SW_Stress.mxd



Moira River, Napanee Region and Prince Edward Region Watersheds.
 RR #2, 2061 Old Highway # 2, Belleville, Ontario, K8N 4Z2.
 www.quinteconservation.ca, 613-968-3434
 Produced by Quinte Conservation under license with the
 Ontario Ministry of Natural Resources. Copyright Quinte Conservation and
 the King's Printer for Ontario, 2023. Data is projected in NAD 83
 UTM Zone 18N.
 Digital Mapping Sources:
 Base Map - Ontario Ministry of Natural Resources
 This map is for illustrative purposes only. QC makes no warranties and assumes no liability
 whatsoever regarding the truth, accuracy, currency, or completeness of the data.



Legend

- Highway 401
- Highways
- Rivers
- Lakes
- Potential Stress**
- Tier 1 Evaluated
- Tweed

Map 3.16 Tier 2 Potential Groundwater Stress