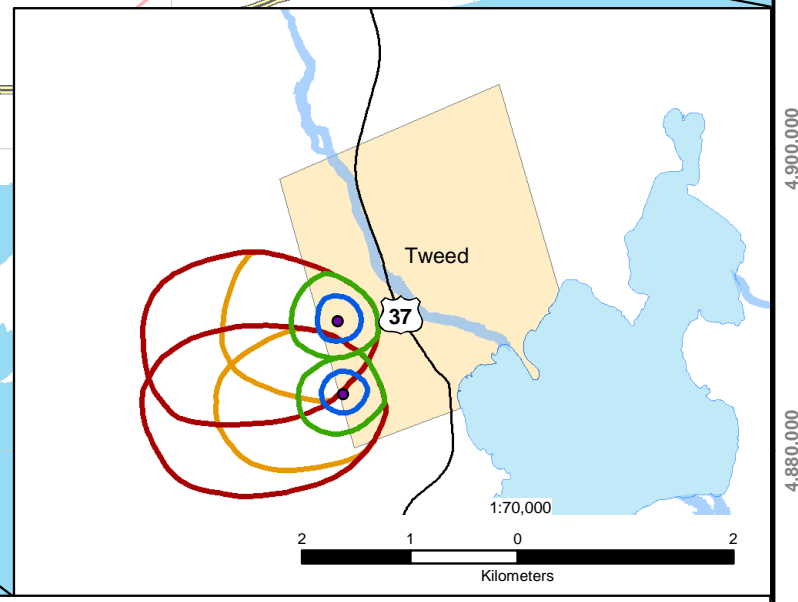
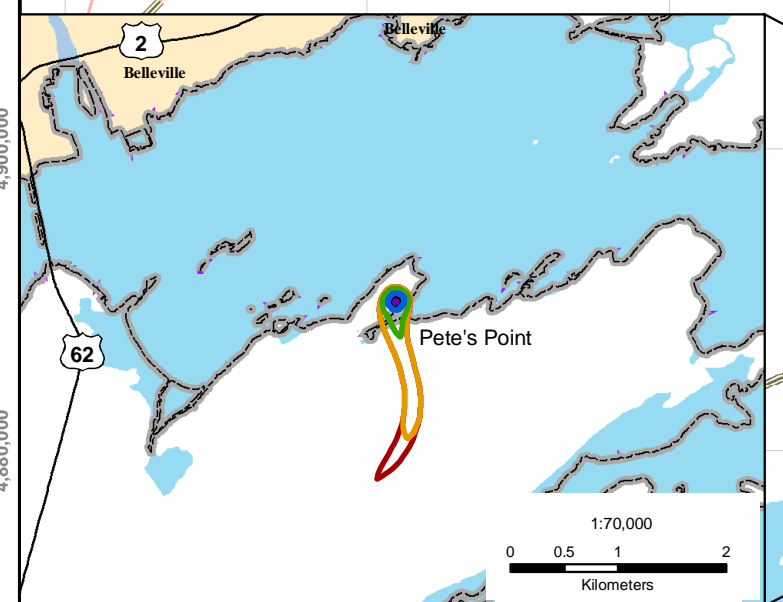
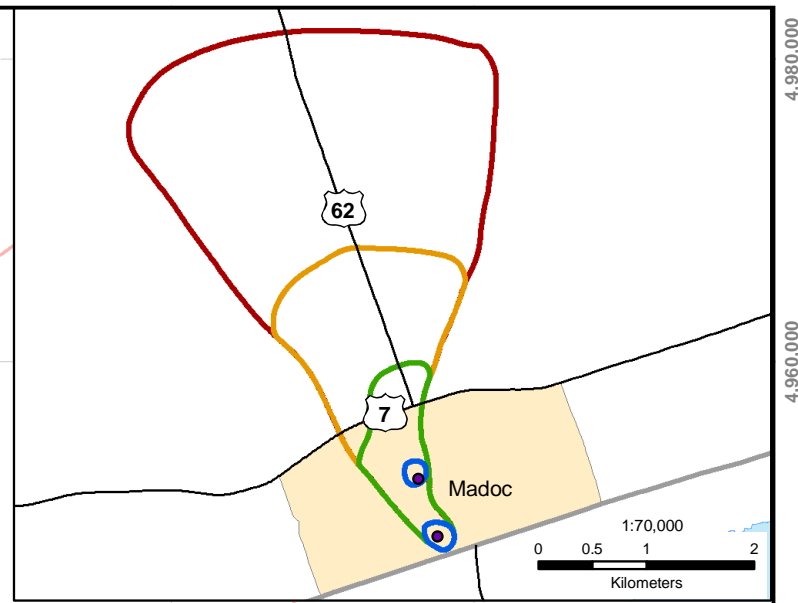
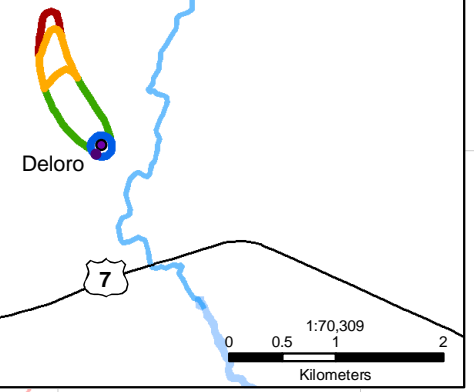
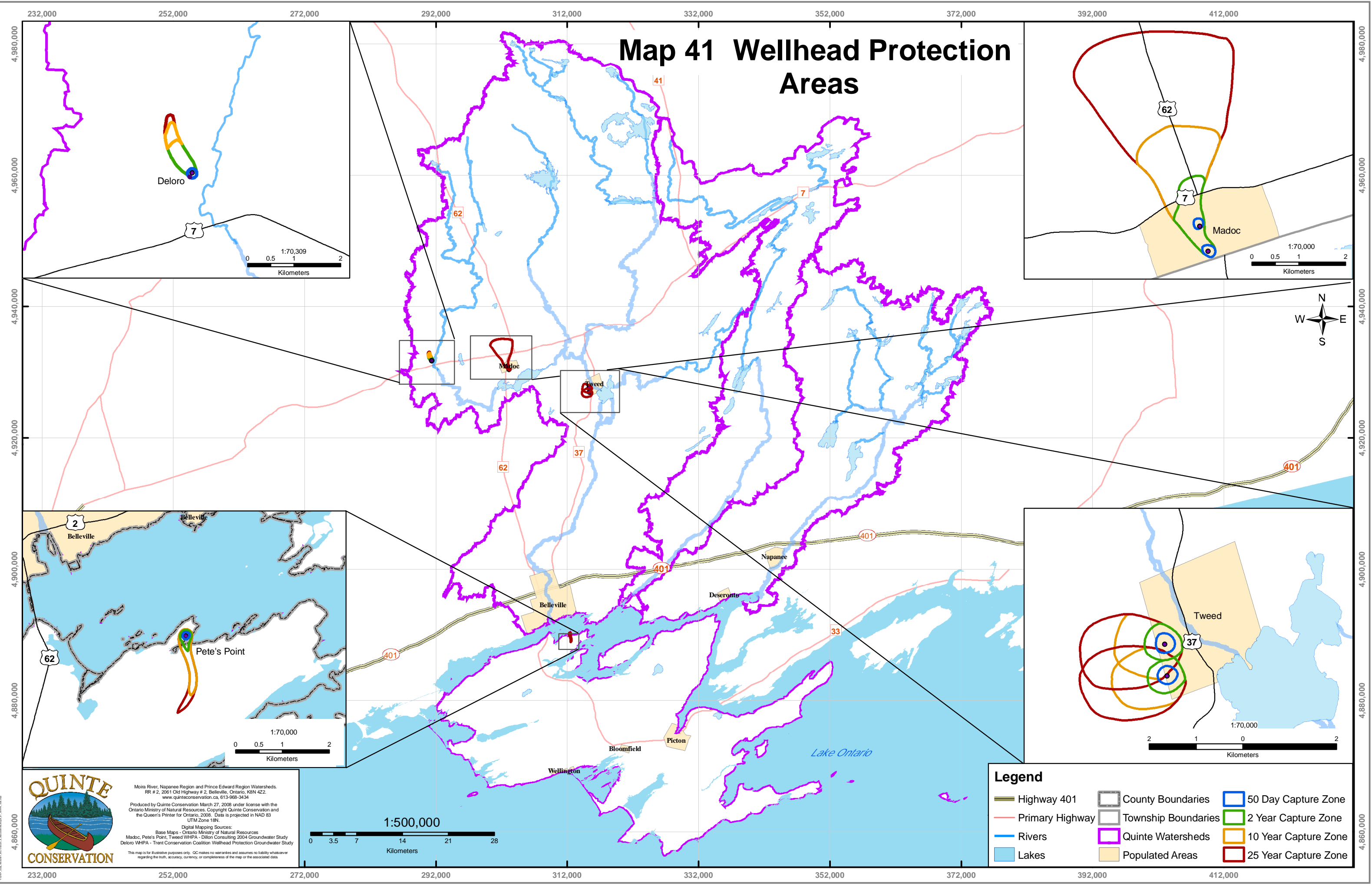


# Map 41 Wellhead Protection Areas



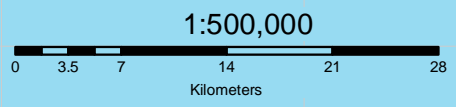
**QUINTE CONSERVATION**

Moira River, Napanee Region and Prince Edward Region Watersheds  
 RR # 2, 2061 Old Highway # 2, Belleville, Ontario, K8N 4Z2.  
 www.quinteconservation.ca, 613-968-3434

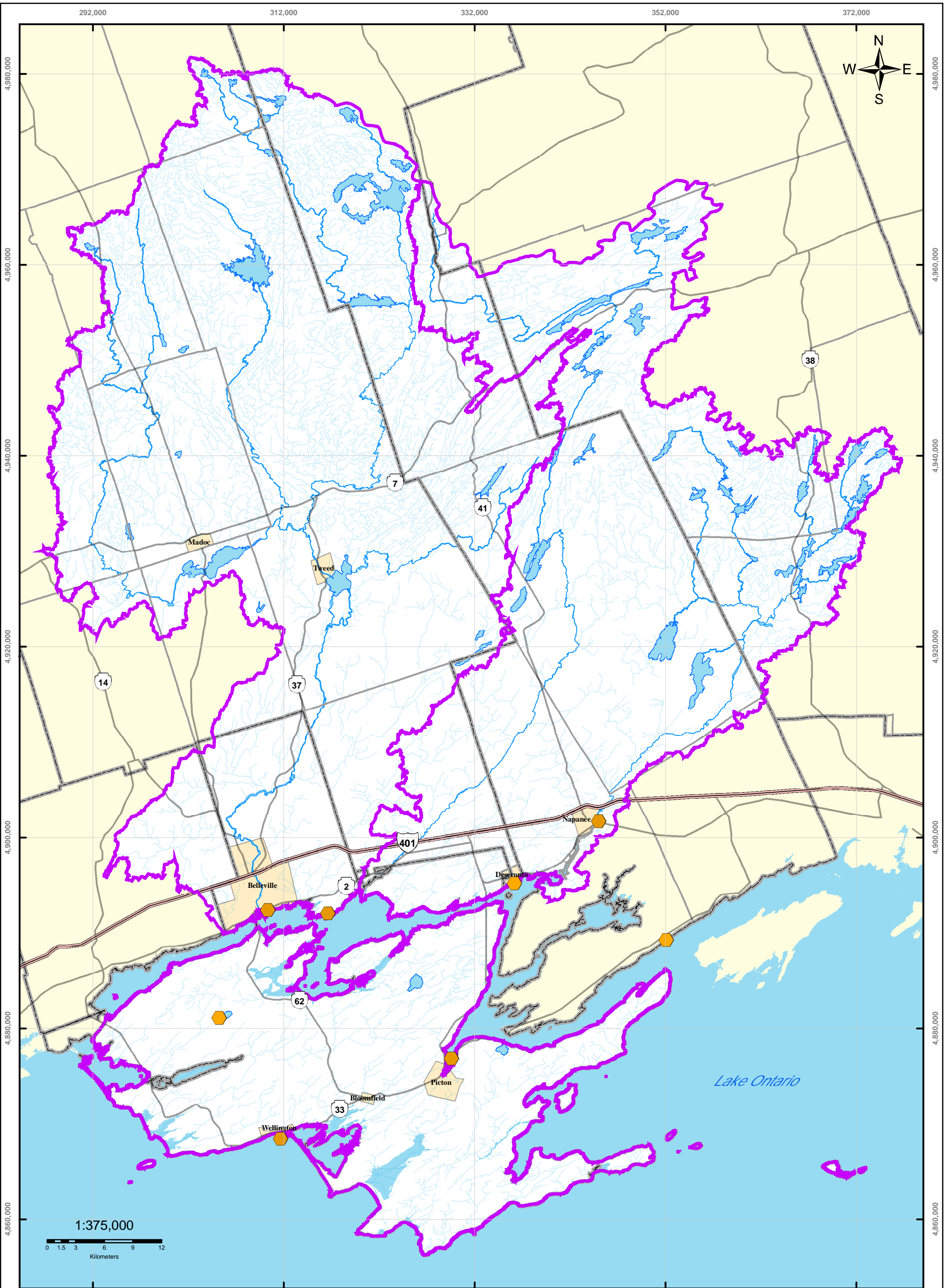
Produced by Quinte Conservation March 27, 2008 under license with the Ontario Ministry of Natural Resources. Copyright Quinte Conservation and the Queen's Printer for Ontario, 2008. Data is projected in NAD 83 UTM Zone 18N.

Digital Mapping Sources:  
 Base Maps - Ontario Ministry of Natural Resources  
 Madoc, Pete's Point, Tweed WHPA - Dillon Consulting 2004 Groundwater Study  
 Deloro WHPA - Trent Conservation Coalition Wellhead Protection Groundwater Study

This map is for illustrative purposes only. QC makes no warranties and assumes no liability whatsoever regarding the truth, accuracy, currency, or completeness of the map or the associated data.



Legend					
	Highway 401		County Boundaries		50 Day Capture Zone
	Primary Highway		Township Boundaries		2 Year Capture Zone
	Rivers		Quinte Watersheds		10 Year Capture Zone
	Lakes		Populated Areas		25 Year Capture Zone



**QUINTE**  
CONSERVATION

Moira River, Napanee Region and Prince Edward Region Watersheds.  
RR # 2, 2061 Old Highway # 2, Belleville, Ontario, K8N 4Z2.  
www.quinteconservation.ca, 613-968-3434

Produced by Quinte Conservation March 27, 2008 under license with the  
Ontario Ministry of Natural Resources. Copyright Quinte Conservation and  
the Queen's Printer for Ontario, 2008. Data is projected in NAD 83  
UTM Zone 18N.

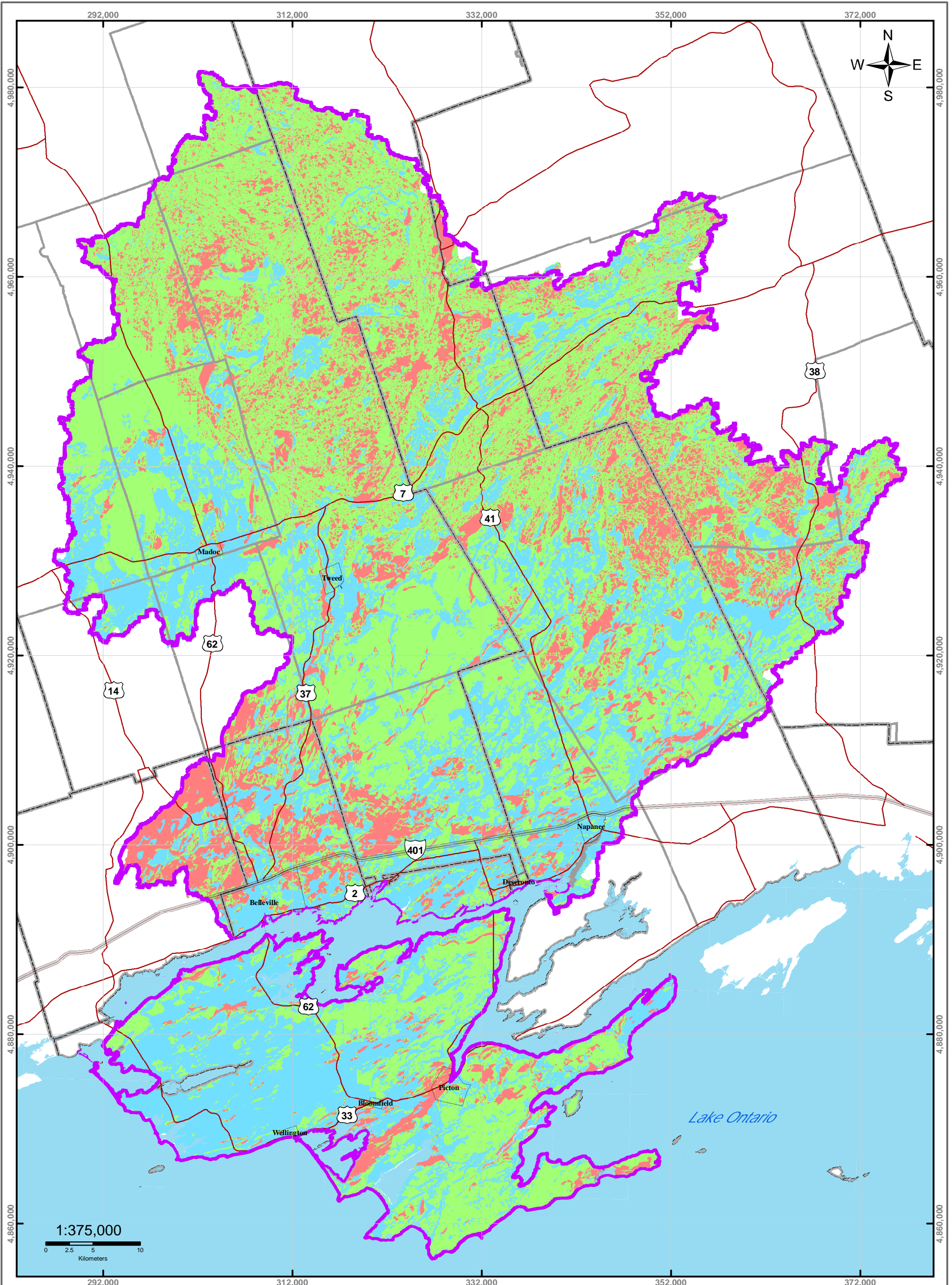
Digital Mapping Sources:  
Base Map - Ontario Ministry of Natural Resources  
Surface Water Intakes - Ontario Ministry of the Environment

*Legend*

Surface Water Intakes	Rivers	Township Boundaries
Highway 401	Lakes	Populated Areas
Highways	County Boundaries	Quinte Conservation Watersheds

# Map 42 Surface Water Intake Locations





Moira River, Napanee Region and Prince Edward Region Watersheds.  
 RR # 2, 2061 Old Highway # 2, Belleville, Ontario, K8N 4Z2.  
 www.quinteconservation.ca, 613-968-3434

Produced by Quinte Conservation March 27, 2008 under license with the  
 Ontario Ministry of Natural Resources. Copyright Quinte Conservation and  
 the Queen's Printer for Ontario, 2008. Data is projected in NAD 83  
 UTM Zone 18N.

Digital Mapping Sources:  
 Base Map - Ministry of Natural Resources

*Legend*

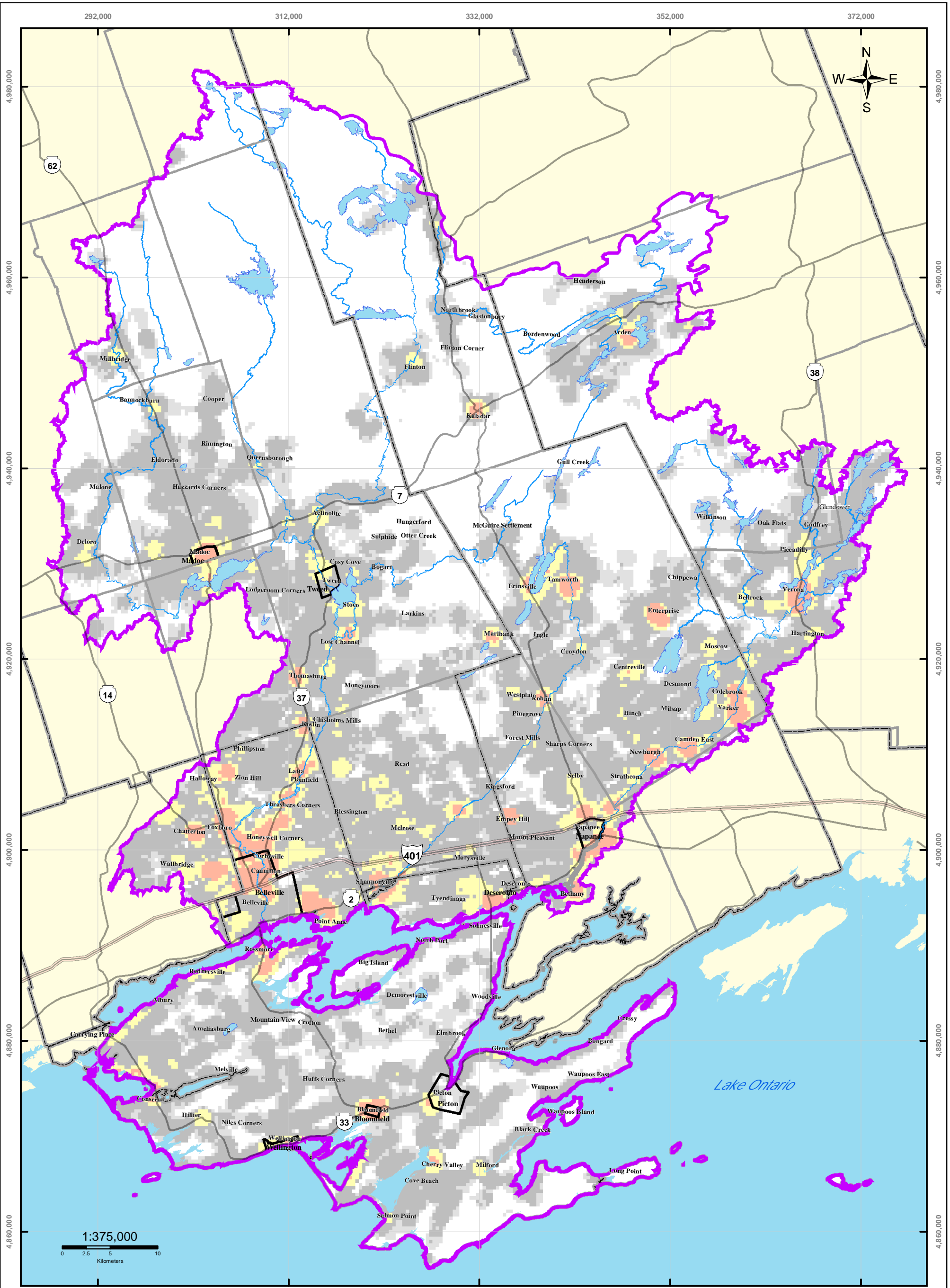
- Highway 401
- Highways
- Quinte Region
- Populated Areas
- County Boundaries
- Township Boundaries

**Annual Infiltration (mm)**

- 77 - 150
- 150 - 200
- 200 - 366

# Map 43 Areas of Significant Recharge





Moira River, Napanee Region and Prince Edward Region Watersheds.  
 RR # 2, 2061 Old Highway # 2, Belleville, Ontario, K8N 4Z2.  
 www.quinteconservation.ca, 613-968-3434  
 Produced by Quinte Conservation March 27, 2008 under license with the  
 Ontario Ministry of Natural Resources. Copyright Quinte Conservation and  
 the Queen's Printer for Ontario, 2008. Data is projected in NAD 83  
 UTM Zone 18N.  
 Digital Mapping Sources:  
 Base Map - Ministry of Natural Resources  
 Water Well Data - Dillon Ground Water Study & Ministry of Environment

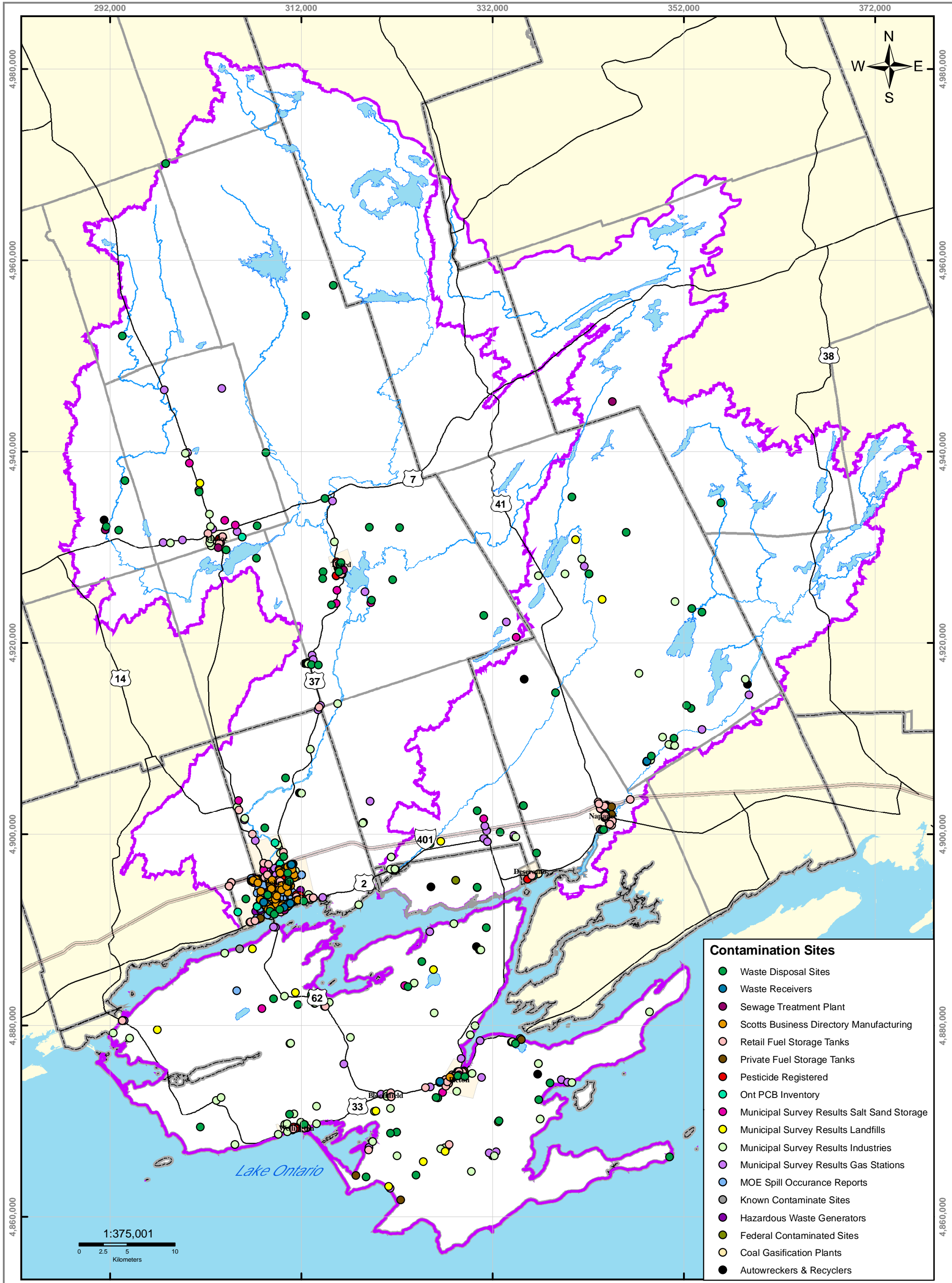
*Legend*

- Highway 401
- Highways
- Rivers
- Lakes
- County Boundaries
- Township Boundaries
- Populated Areas
- QC Region

**Well Density (wells/km<sup>2</sup>)**

- |          |            |
|----------|------------|
| 0 - 1    | 10.1 - 20  |
| 1.1 - 2  | 20.1 - 100 |
| 2.1 - 10 |            |

# Map 44 Well Density Map



**QUINTE CONSERVATION**

Maira River, Napanee Region and Prince Edward Region Watersheds.  
RR # 2, 2061 Old Highway # 2, Belleville, Ontario, K8N 4Z2.  
www.quinteconservation.ca, 613-968-3434

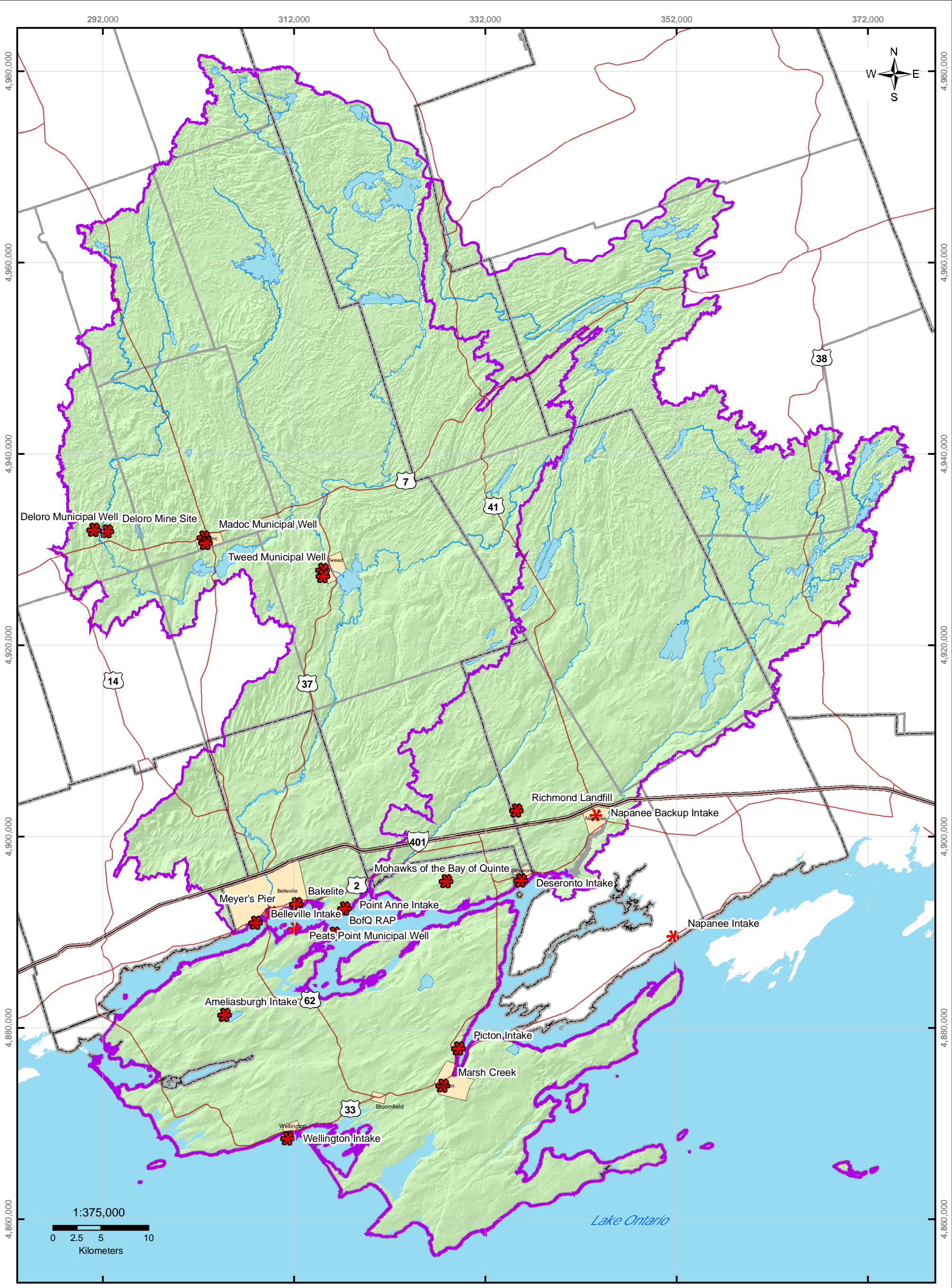
Produced by Quinte Conservation March 27, 2008 under license with the Ontario Ministry of Natural Resources. Copyright Quinte Conservation and the Queen's Printer for Ontario, 2008. Data is projected in NAD 83 UTM Zone 18N.

Digital Mapping Sources:  
Base Map - Ministry of Natural Resources  
Contaminates - Dillon Ground Water Study

This map is for illustrative purposes only. QC makes no warranties and assumes no liability whatsoever regarding the accuracy, currency, completeness or appropriateness of the data or information shown.

# Map 45 Contamination Sites





**QUINTE CONSERVATION**

Mojra River, Napanee Region and Prince Edward Region Watersheds.  
 RR # 2, 2061 Old Highway # 2, Belleville, Ontario, K8N 4Z2.  
 www.quinteconservation.ca, 613-968-3434

Produced by Quinte Conservation March 27, 2008 under license with the Ontario Ministry of Natural Resources. Copyright Quinte Conservation and the Queen's Printer for Ontario, 2008. Data is projected in NAD 83 UTM Zone 18N.

Digital Mapping Sources:  
 Base Map - Ontario Ministry of Natural Resources  
 Index Map - ESRI Canada

*Legend*

Issues and Concerns	Rivers	County Boundary
Highway 401	Lakes	Municipal Boundary
Highways	Quinte Watersheds	Population Nodes

# Map 46 Issues and Concerns