

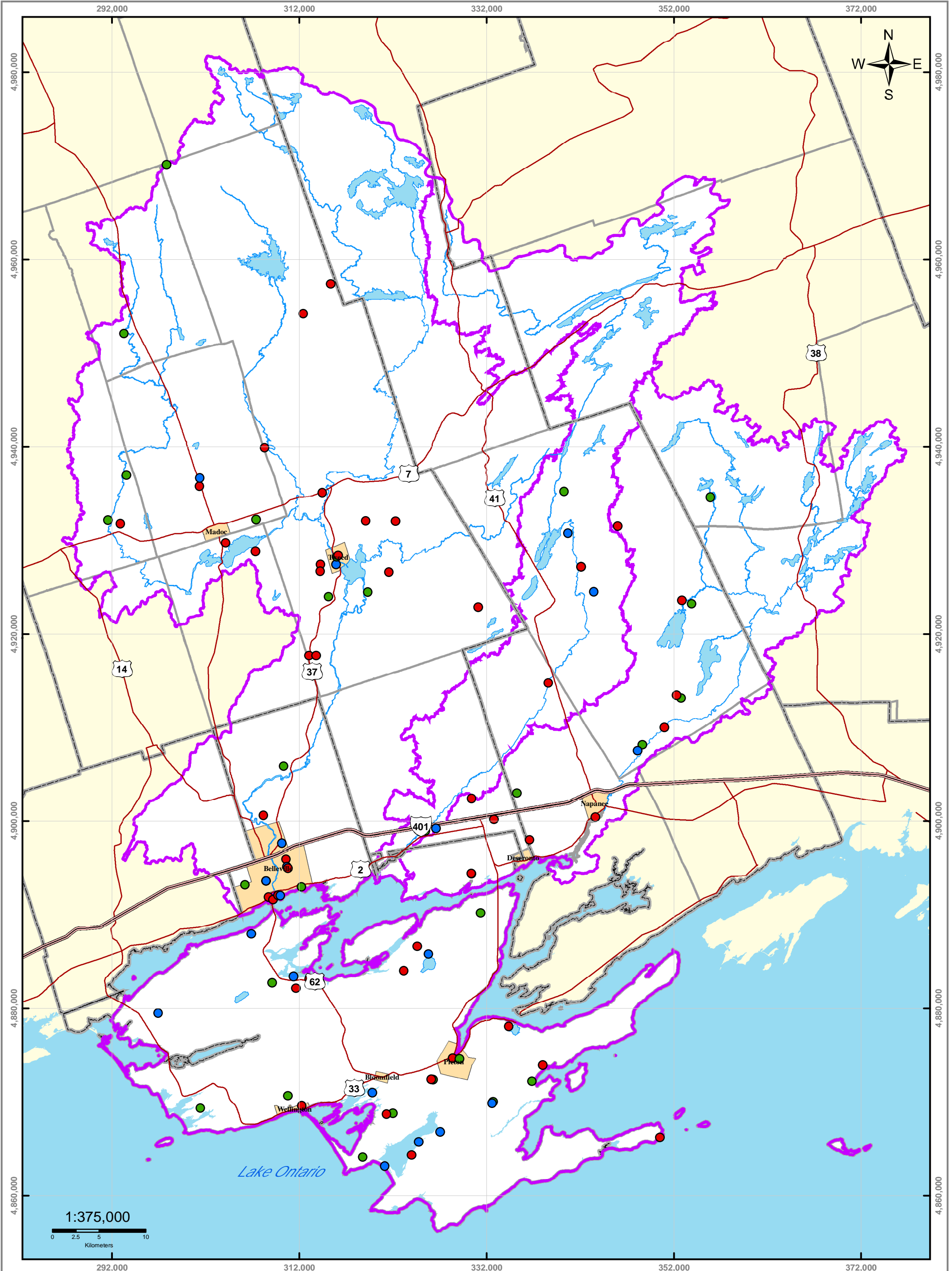
QUINTE CONSERVATION
 Moira River, Napanee Region and Prince Edward Region Watersheds.
 RR # 2, 2061 Old Highway # 2, Belleville, Ontario, K8N 4Z2.
 www.quinteconservation.ca, 613-968-3434
 Produced by Quinte Conservation March 27, 2008 under license with the
 Ontario Ministry of Natural Resources. Copyright Quinte Conservation and
 the Queen's Printer for Ontario, 2008. Data is projected in NAD 83
 UTM Zone 18N.
 Digital Mapping Sources:
 Base Layers - Ontario Ministry of Natural Resources
 Land Use Zones - Central Frontenac Township, County of Prince Edward,
 City of Belleville, City of Quinte West, Hastings County

Legend

- Highway 401
- Rivers
- County Boundaries
- Populated Areas
- Highways
- Lakes
- Township Boundaries
- Quinte Region

Map 21 Land Use Data Gap

Data gap exists as many municipalities do not have land use in digital format



QUINTE CONSERVATION

Moira River, Napanee Region and Prince Edward Region Watersheds.
 RR # 2, 2061 Old Highway # 2, Belleville, Ontario, K8N 4Z2.
 www.quinteconservation.ca, 613-968-3434

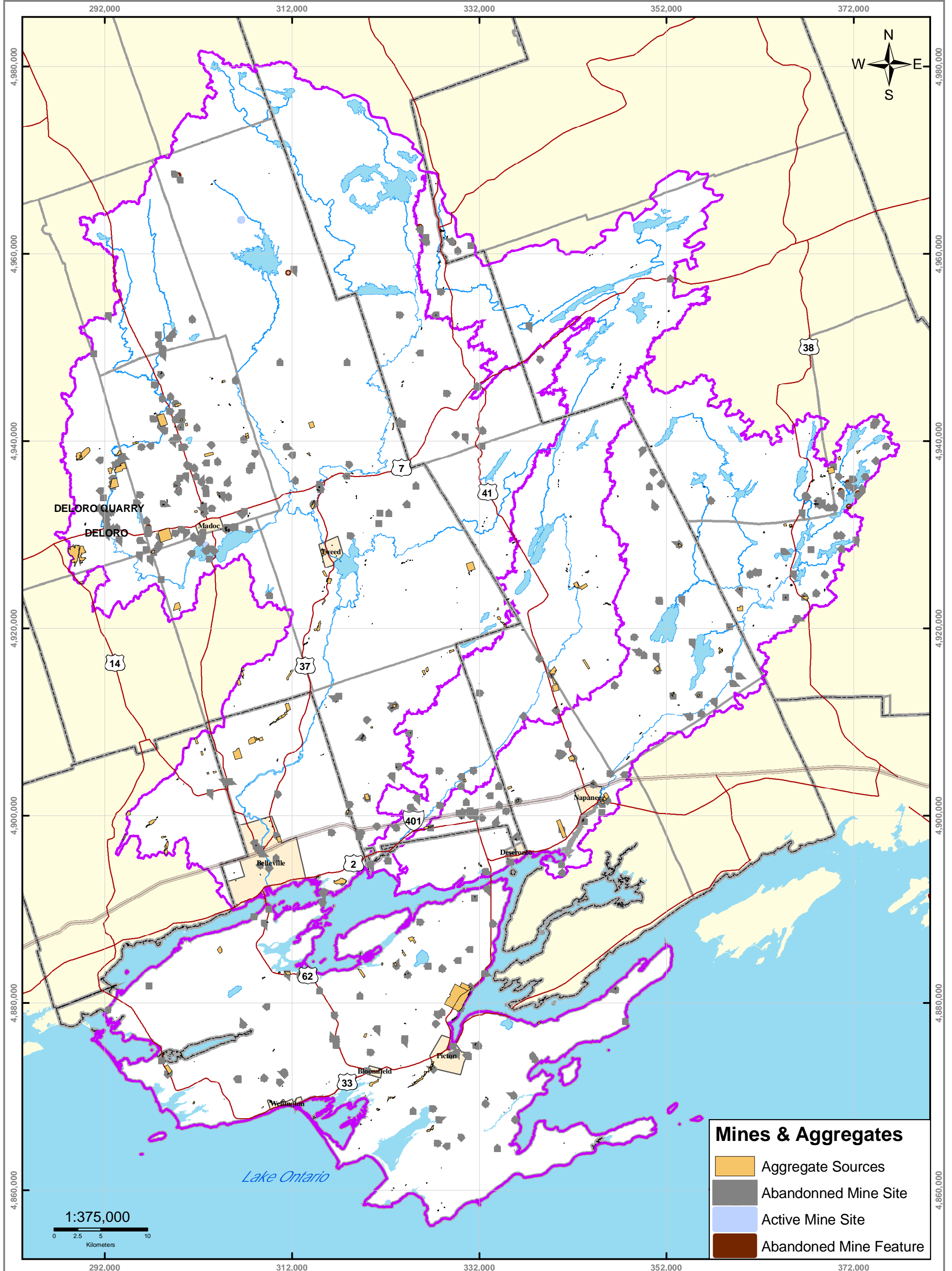
Produced by Quinte Conservation March 27, 2008 under license with the Ontario Ministry of Natural Resources. Copyright Quinte Conservation and the Queen's Printer for Ontario, 2008. Data is projected in NAD 83 UTM Zone 18N.

Digital Mapping Sources:
 Base Map - Ontario Ministry of Natural Resources
 Landfills - Dillon Consulting Inc., 2004 Groundwater Study

Legend

● Landfill - Active	Highway 401	Lakes	County Boundaries
● Landfill - Closed	Highways	Populated Areas	Township Boundaries
● Landfill - Unknown	Rivers	Quinte Region	

Map 22 Landfills



Mines & Aggregates

- Aggregate Sources
- Abandoned Mine Site
- Active Mine Site
- Abandoned Mine Feature

Legend

- Highway 401
- Rivers
- Populated Areas
- County Boundaries
- Highways
- Lakes
- Quinte Region
- Township Boundaries

Map 23 Mines and Aggregates

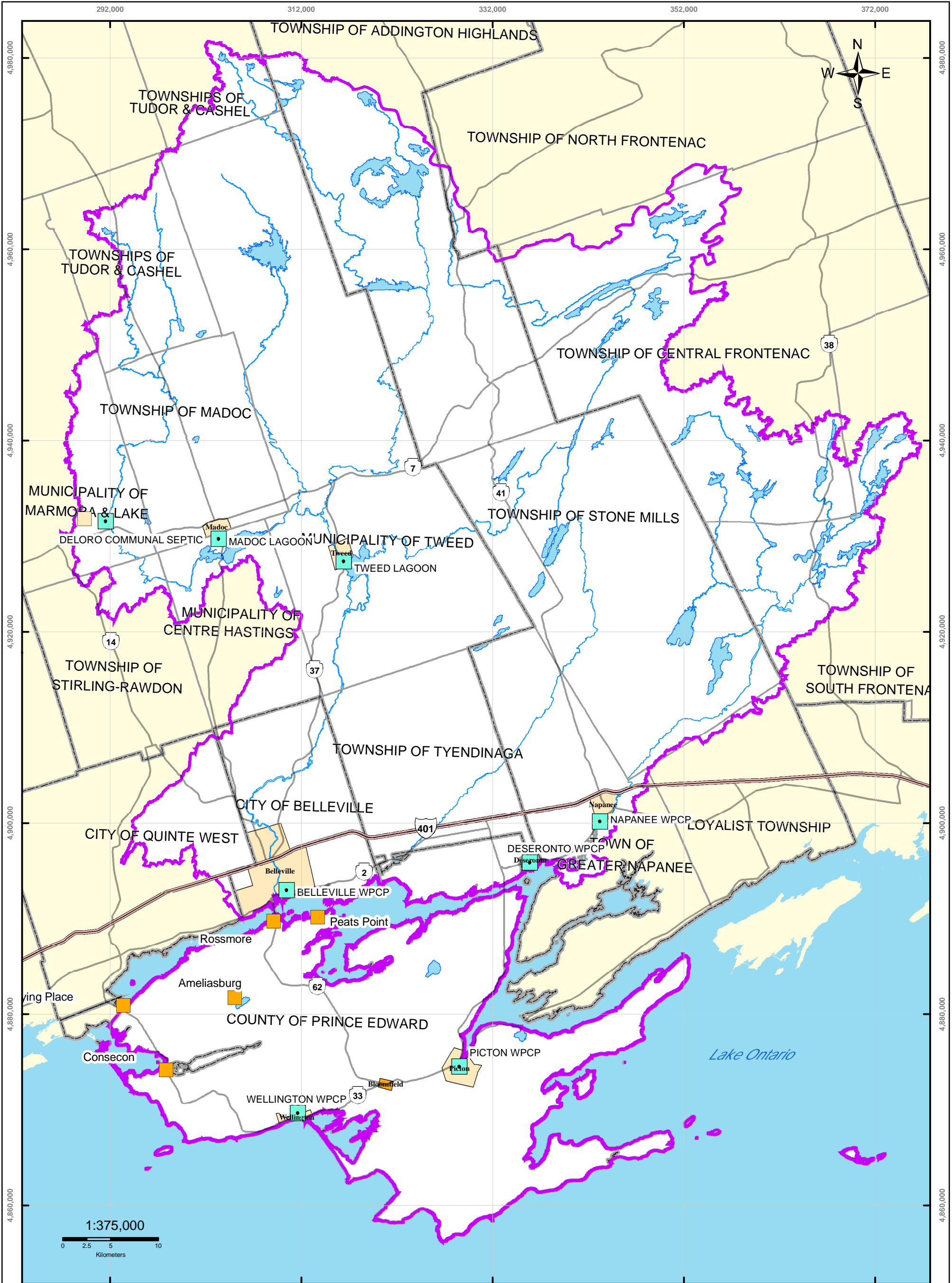


Moira River, Napanee Region and Prince Edward Region Watersheds.
 RR # 2, 2061 Old Highway # 2, Belleville, Ontario, K8N 4Z2.
 www.quinteconservation.ca, 613-968-3434

Produced by Quinte Conservation March 27, 2008 under license with the Ontario Ministry of Natural Resources. Copyright Quinte Conservation and the Queen's Printer for Ontario, 2008. Data is projected in NAD 83 UTM Zone 18N.

Digital Mapping Sources:
 Base Map - Ministry of Natural Resources
 Mines & Aggregates - Ministry of Natural Resources

This map is for digital use only. It contains information and data that are the property of the Ministry of Natural Resources and is not to be reproduced or used in any way without the express written permission of the Ministry of Natural Resources.



QUINTE CONSERVATION

Moira River, Napanee Region and Prince Edward Region Watersheds.
 RR # 2, 2061 Old Highway # 2, Belleville, Ontario, K8N 4Z2.
 www.quinteconservation.ca, 613-968-3434

Produced by Quinte Conservation March 27, 2008 under license with the Ontario Ministry of Natural Resources. Copyright Quinte Conservation and the Queen's Printer for Ontario, 2008. Data is projected in NAD 83 UTM Zone 18N.

Digital Mapping Sources:
 Base Map - Ministry of Natural Resources
 Waste Water Plant Locations - Ministry of Environment

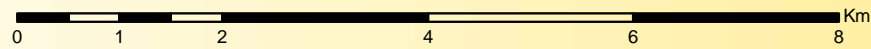
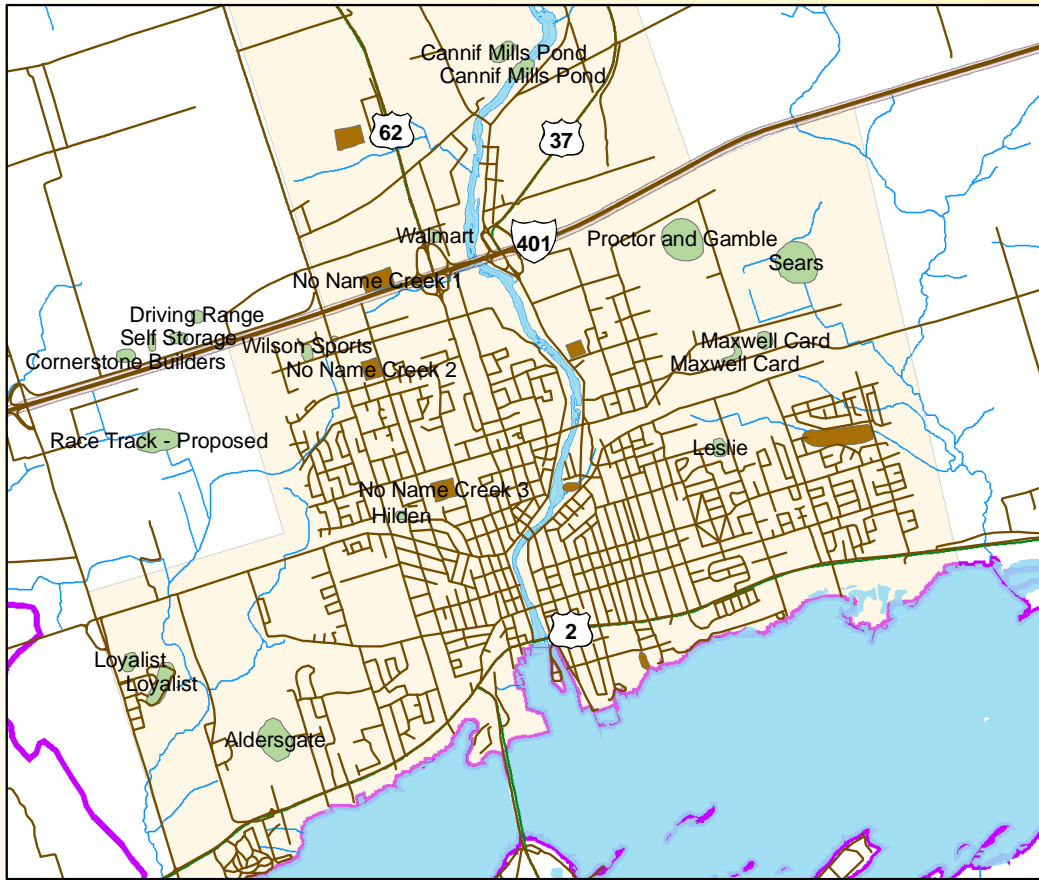
This map is for illustrative purposes only. QC makes no warranties and assumes no liability whatsoever regarding the truth, accuracy, currency, or completeness of this map or the associated data.

Legend

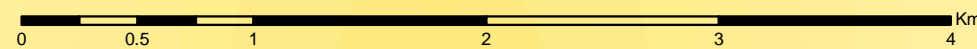
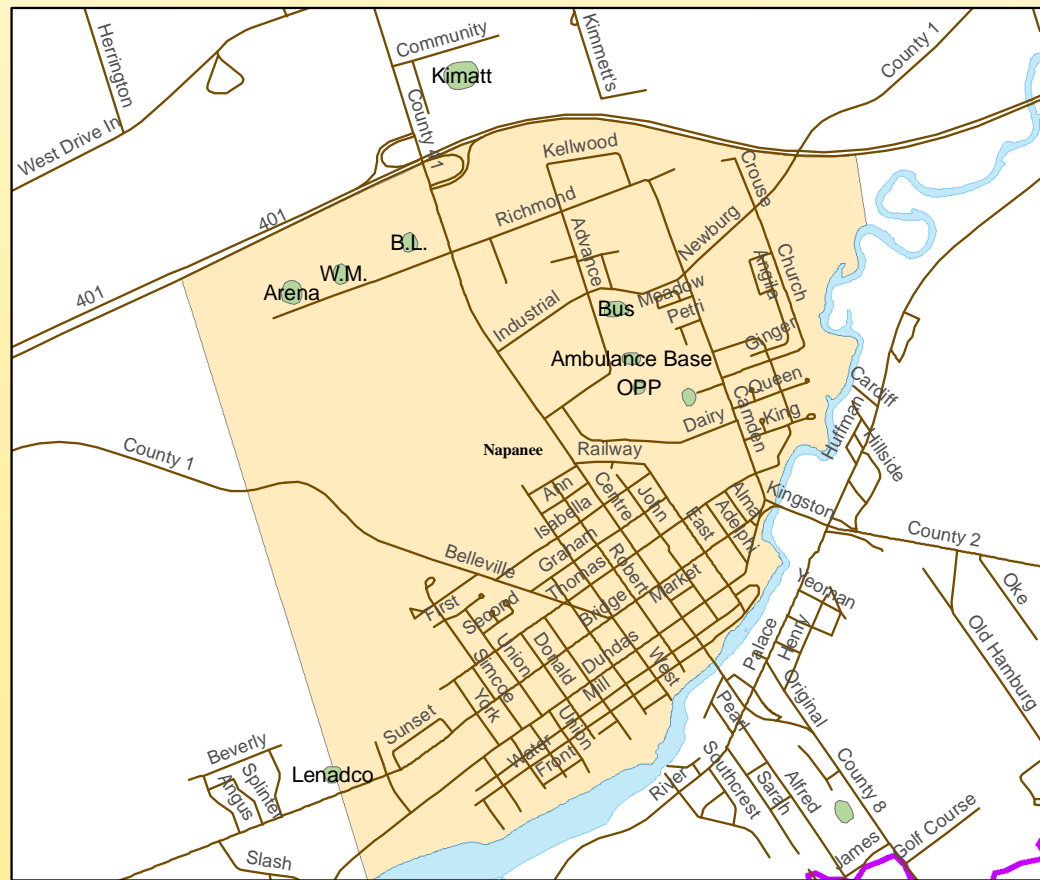
Waste Water Plants	Lakes	Township Boundaries
Highway 401	QC Region	Full Municipal Services (water & sewer)
Highways	County Boundaries	Municipal Water Service Only
Rivers		

Map 24 Municipally Serviced Areas

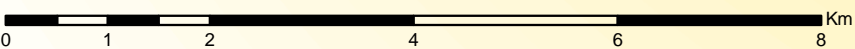
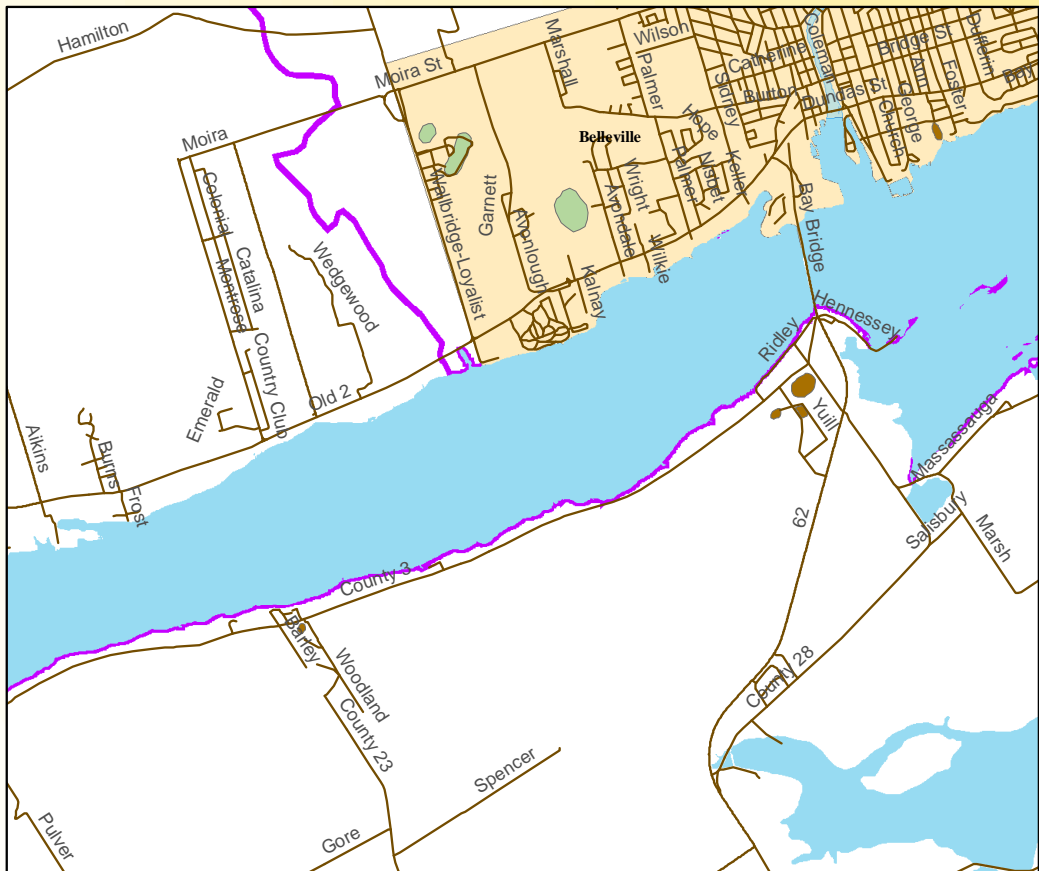
Belleville Stormwater Ponds



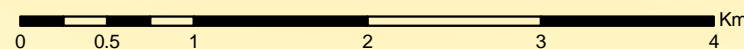
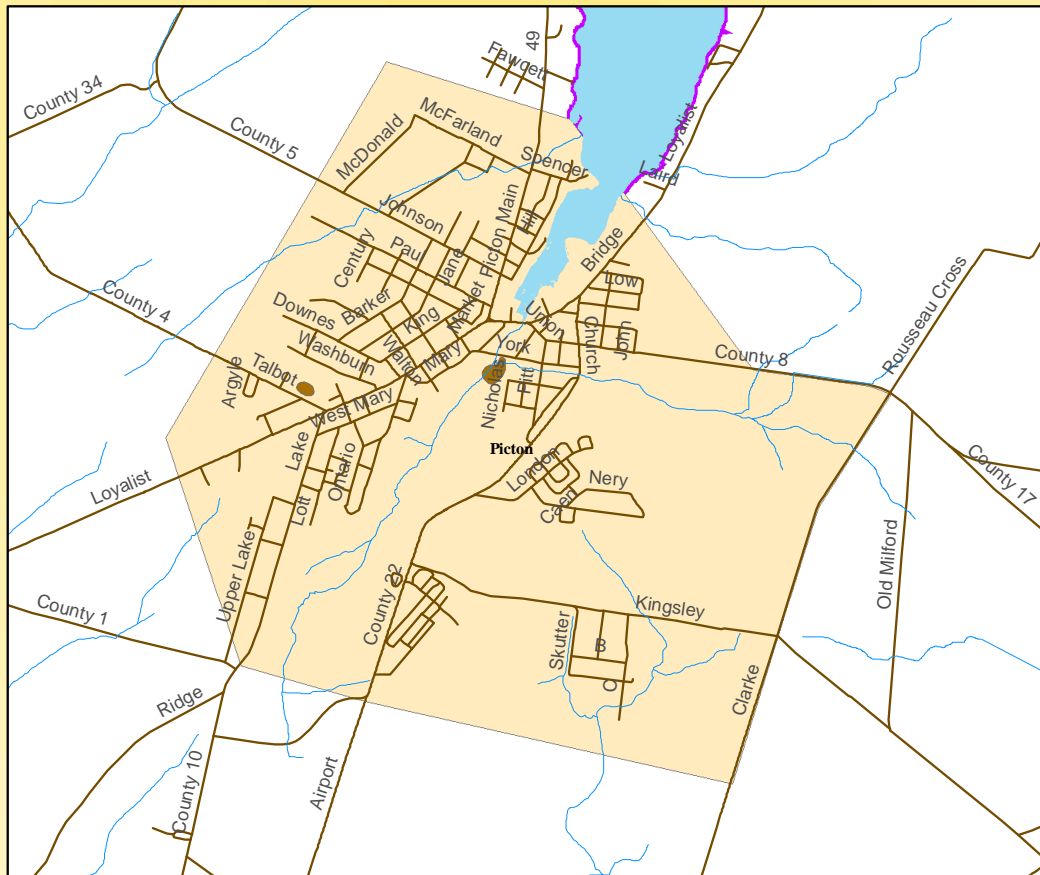
Napanee Stormwater Ponds



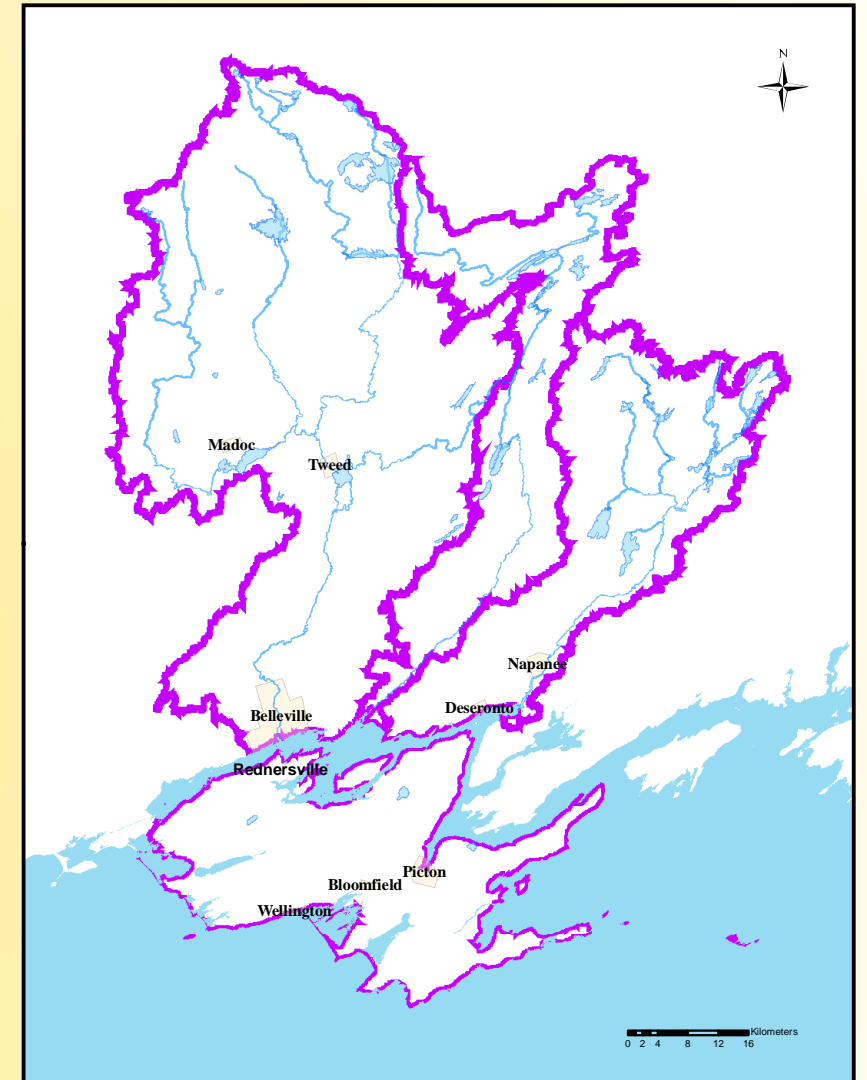
Rednersville Stormwater Ponds



Picton Stormwater Ponds



Map 25 Approximate Locations of Stormwater Ponds



Legend

- Highway 401
- Highways
- Roads
- Rivers
- Lakes
- Populated Areas
- Quinte Watersheds
- Municipal Stormwater Pond
- Private Stormwater Pond

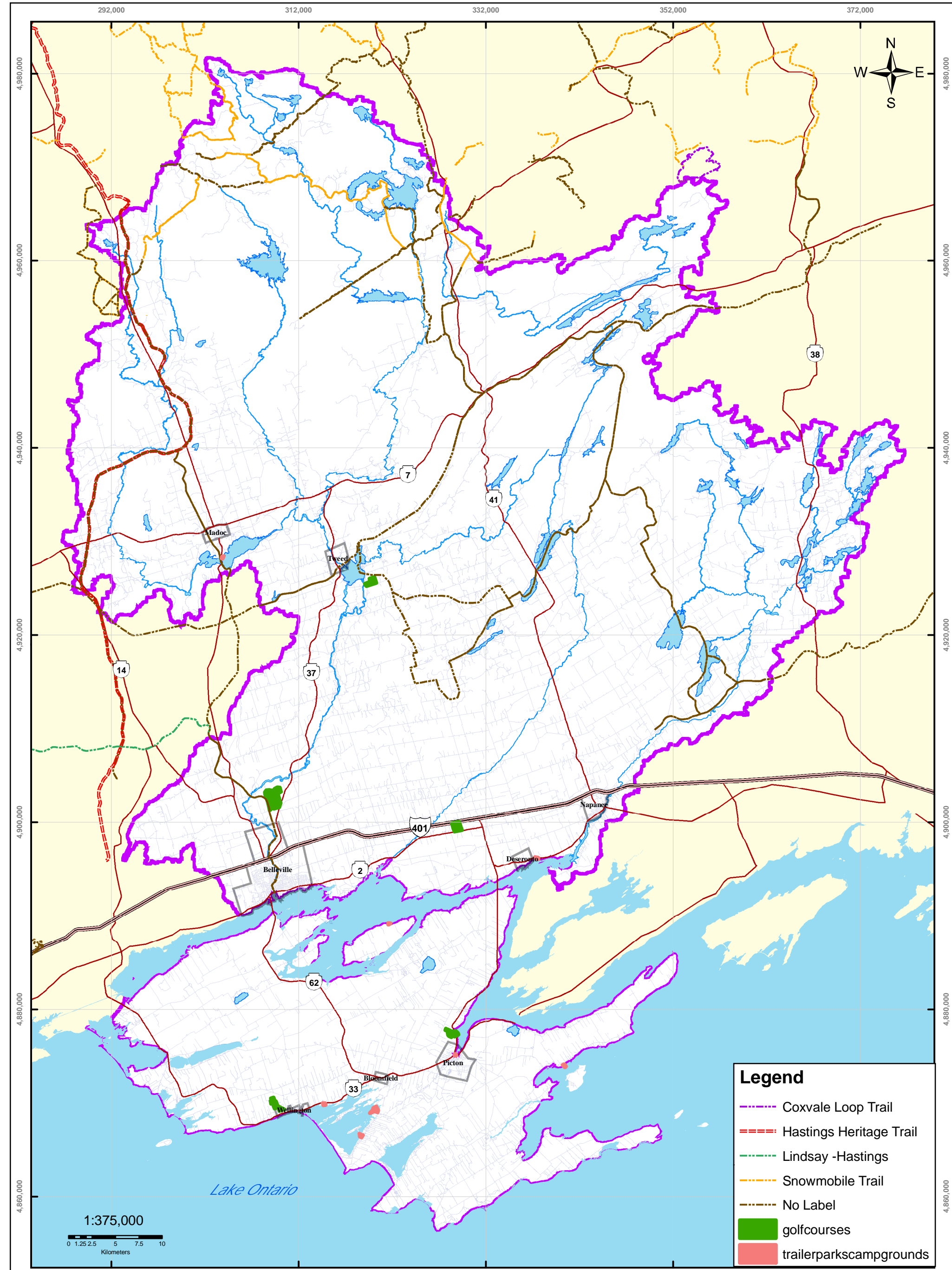


Moira River, Napanee Region
and Prince Edward Region Watersheds.
RR # 2, 2061 Old Highway # 2,
Belleville, Ontario, K8N 4Z2.
www.quinteconservation.ca, 613-968-3434

Produced by Quinte Conservation March 27, 2008
under license with the Ontario Ministry of Natural
Resources. Copyright Quinte Conservation and the
Queen's Printer for Ontario, 2008.
Data is projected in NAD 83 UTM Zone 18N.

DIGITAL MAPPING SOURCES:

Base Map - Ontario Ministry of Natural Resources
Road Network - Statistics Canada



Legend

- - - Coxvale Loop Trail
- - - Hastings Heritage Trail
- - - Lindsay -Hastings
- - - Snowmobile Trail
- - - No Label
- golfcourses
- trailerparks&campgrounds

QUINTE CONSERVATION

Moira River, Napanee Region and Prince Edward Region Watersheds.
 RR #2, 2081 Old Highway #2, Belleville, Ontario, K8N 4Z2.
 www.quinteconservation.ca, 613-968-3434

Produced by Quinte Conservation March 27, 2008 under license with the Ontario Ministry of Natural Resources. Copyright Quinte Conservation and the Queen's Printer for Ontario, 2008. Data is projected in NAD 83 UTM Zone 18N.

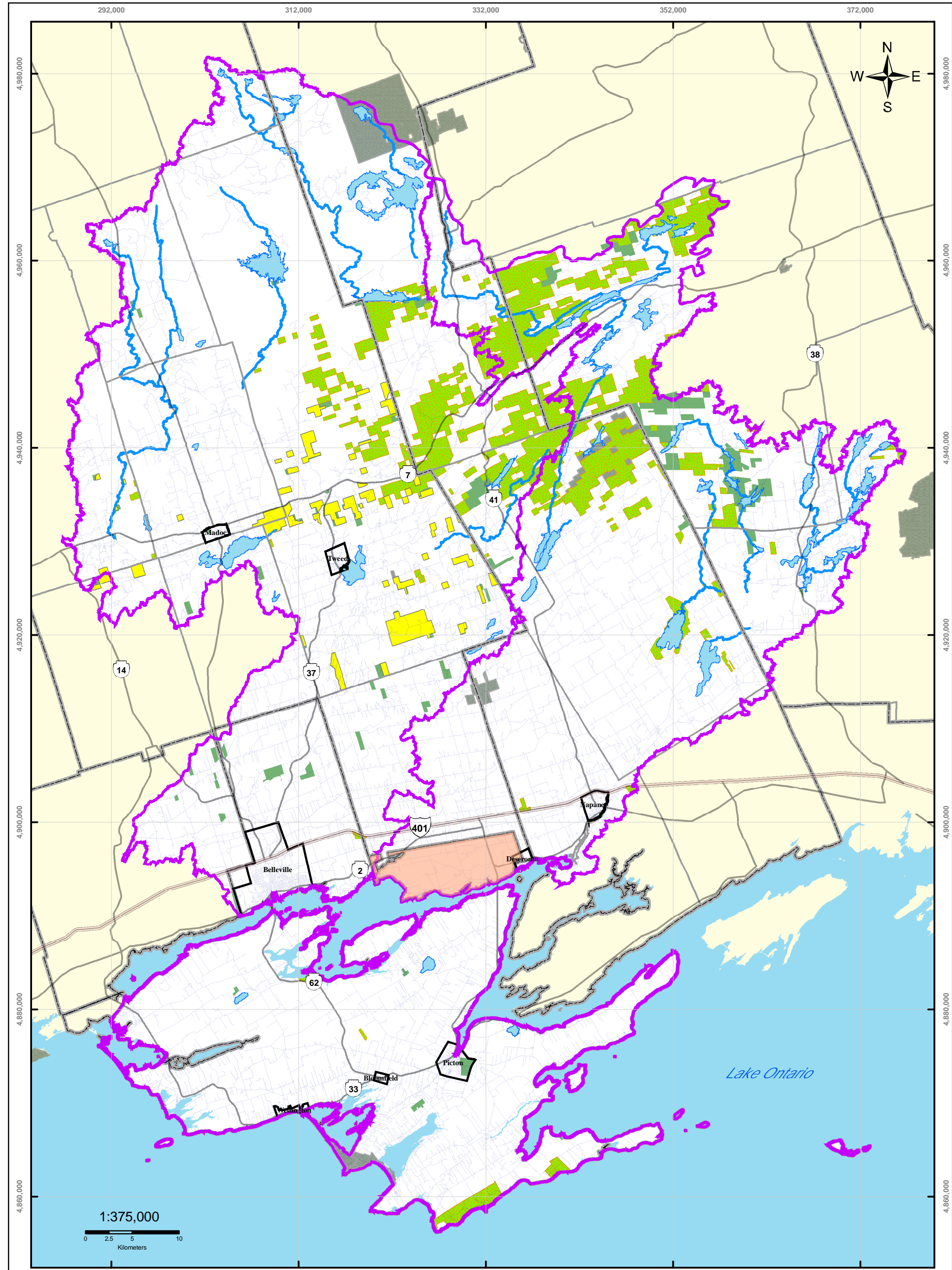
Digital Mapping Sources:
 Base Map - Ministry of Natural Resources
 Camping Sites and Trails - Ministry of Natural Resources
 Hastings Heritage Trail - Hastings County

This map is for illustrative purposes only. QC makes no warranties and assumes no liability whatsoever regarding the truth, accuracy, currency, or completeness of this map or the associated data.

Legend

- Highway 401
- Highways
- Roads
- Rivers
- Lakes
- QC Region

Map 26 Recreational Land Use



QUINTE CONSERVATION

Moirs River, Nipawee Region and Prince Edward Region Watersheds.
 RR # 2, 2261 Old Highway #2, Belleville, Ontario, K8N 4Z2.
 www.quinteconservation.ca, 613-968-3434

Produced by Quinte Conservation March 27, 2008 under license with the Ontario Ministry of Natural Resources. Copyright Quinte Conservation and the Queen's Printer for Ontario, 2008. Data is projected in NAD 83 UTM Zone 18N.

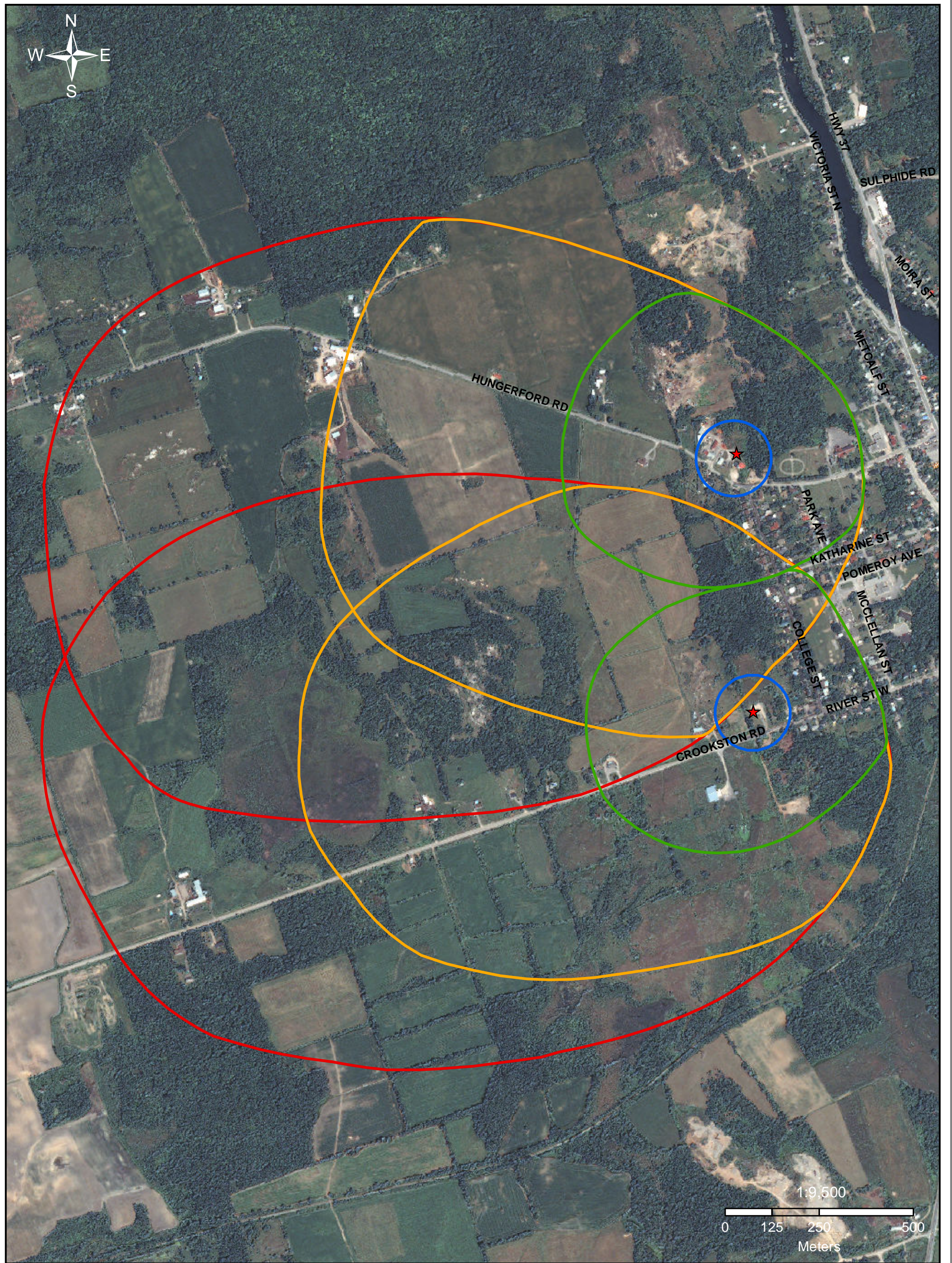
Digital Mapping Sources:
 Base Map - Ministry of Natural Resources
 Provincial Parks, Crown Land, Conservation Properties and Areas, Tyendingaga Mohawk Territory - Ministry of Natural Resources

This map is for illustrative purposes only. QC makes no warranties and assumes no liability, whether regarding the truth, accuracy, currency, or completeness of the map or associated data.

Legend

Roads	Rivers	QC Region	Crown Land
Highways	Lakes	Conservation Properties	Provincial Parks
Highway 401	Populated Areas	Conservation Areas	Tyendingaga Mohawk Territory

Map 27 Protected Lands



Moira River, Napanee Region and Prince Edward Region Watersheds.
RR # 2, 2061 Old Highway # 2, Belleville, Ontario, K8N 4Z2.
www.quinteconservation.ca, 613-968-3434

Produced by Quinte Conservation March 27, 2008 under license with the Ontario Ministry of Natural Resources. Copyright Quinte Conservation and the Queen's Printer for Ontario, 2008. Data is projected in NAD 83 UTM Zone 18N.

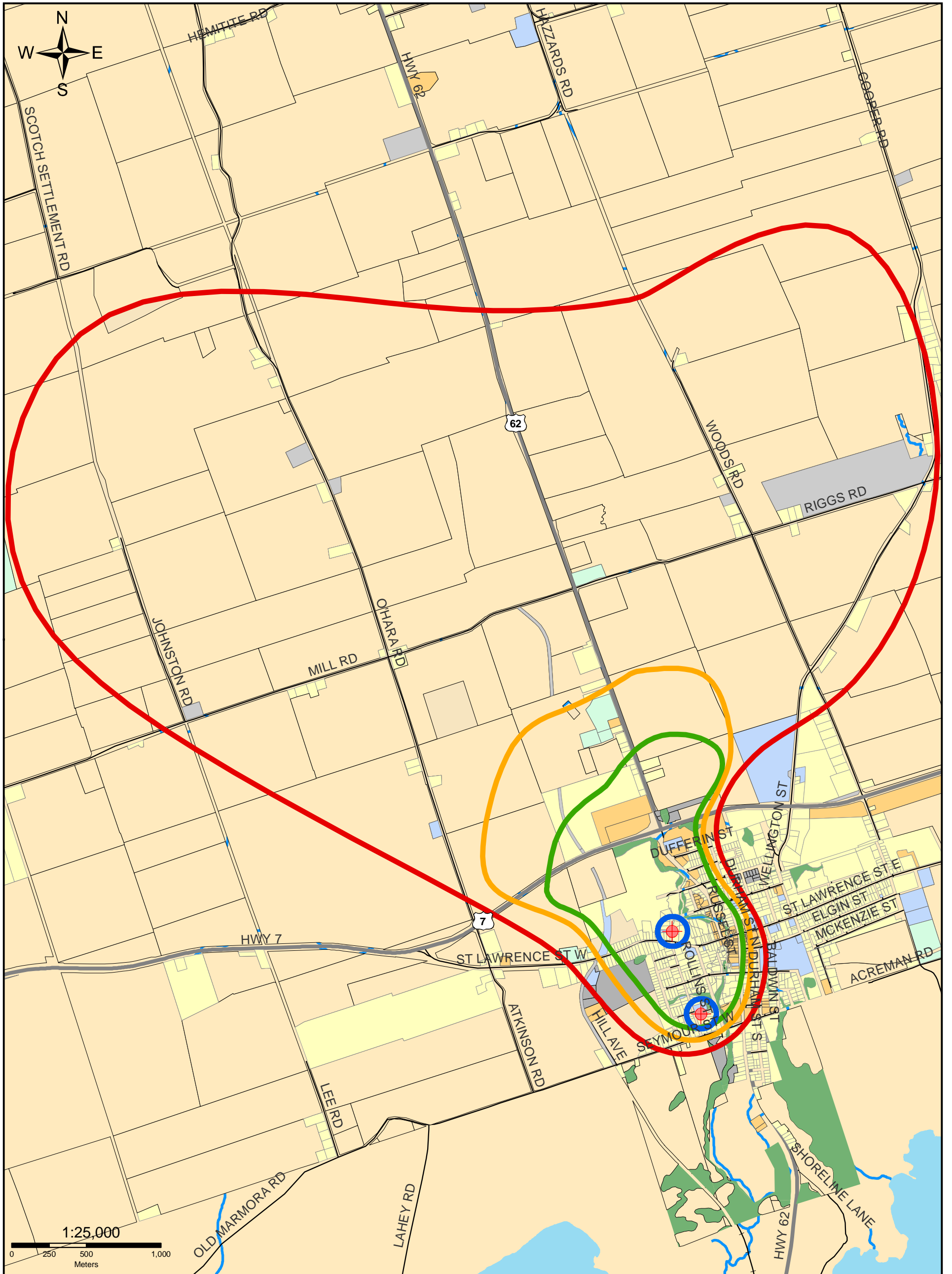
Digital Mapping Sources:
Base Map - Ontario Ministry of Natural Resources

Legend

- ★ tweed wells
- 2 Year Capture Zone
- 25 Year Capture Zone
- 100m Capture Zone
- 10 Year Capture Zone

Map 28 Tweed WHPA

This map is for illustrative purposes only. QC makes no warranties and assumes no liability whatsoever regarding the truth, accuracy, currency, or completeness of this map or the associated data.



Legend

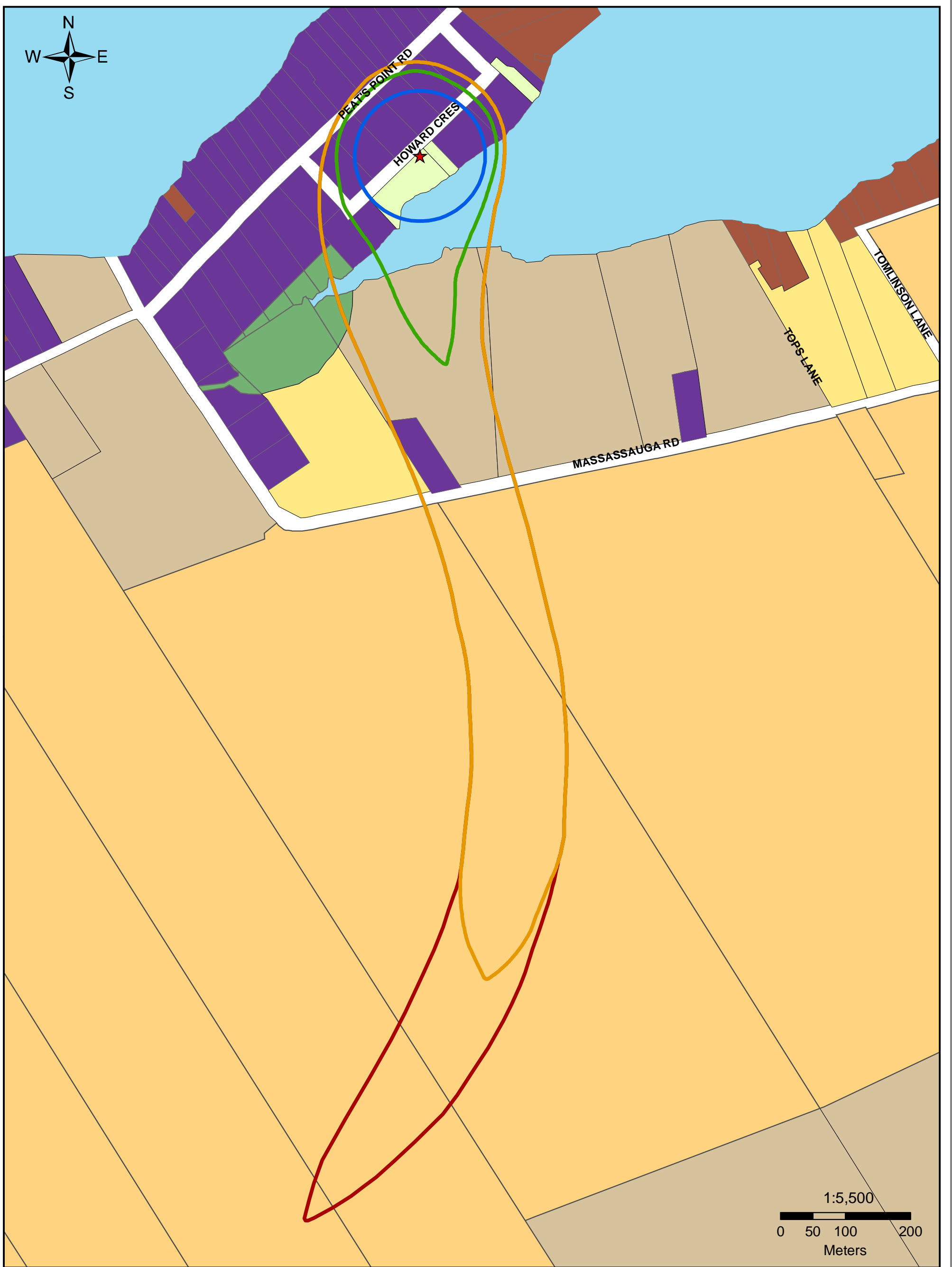
- | | | | | |
|----------------------|--------|--------------------|--------------------------|----------------|
| Municipal Wells | 2 yrs | Land Use | Development | Not Applicable |
| Capture Zones | 5 yrs | Commercial | Environmental Protection | Residential |
| 100 meters | 25 yrs | Community Facility | Institutional | Rural |

Map 29 Madoc WHPA

Draft



Quinte Conservation
 Moira River, Niagara Region and Prince Edward Region Watersheds,
 RR # 2, 2061 Old Highway # 2, Belleville, Ontario, K8N 4Z2.
 www.quinteconservation.ca, 613-968-3434
 Produced by Quinte Conservation March 27, 2008 under license with the
 Ontario Ministry of Natural Resources. Copyright Quinte Conservation and
 the Queen's Printer for Ontario, 2008. Data is projected in NAD 83
 UTM Zone 18N.
 Digital Mapping Sources:
 Base Layers - Ontario Ministry of Natural Resources
 Land Use Zones - Hastings County
 This map is for illustrative purposes only. QC makes no warranties and assumes no liability whatsoever regarding the truth,
 accuracy, currency, or completeness of the map or the associated data.



Legend

- | | | |
|-----------------------|--------------------------------|---------------------------------|
| ★ Municipal Well | Land Use | □ Open Space |
| □ 100m Capture Zone | □ Restricted Rural Agriculture | □ Urban Residential |
| □ 2Year Capture Zone | □ General Rural Agriculture | □ Residential Estate |
| □ 10Year Capture Zone | □ Commercial | □ Residential - Limited Service |
| □ 25Year Capture Zone | □ Environmental Protection | □ Rural Residential |
| | □ Institutional | |

Map 30 Peats Point WHPA



Quinte Conservation
 Molra River, Napanee Region and Prince Edward Region Watersheds.
 RR # 2, 2061 Old Highway # 2, Belleville, Ontario, K8N 4Z2.
 www.quintecconservation.ca, 613-968-3434
 Produced by Quinte Conservation March 27, 2008 under license with the
 Ontario Ministry of Natural Resources. Copyright Quinte Conservation and
 the Queen's Printer for Ontario, 2008. Data is projected in NAD 83
 UTM Zone 18N.
 Digital Mapping Sources:
 Base Map - Ontario Ministry of Natural Resources

This map is for illustrative purposes only. QC makes no warranties and assumes no liability whatsoever regarding the truth, accuracy, currency, or completeness of the map or the associated data.