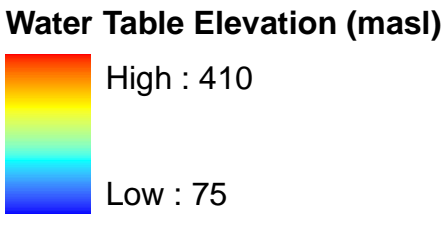


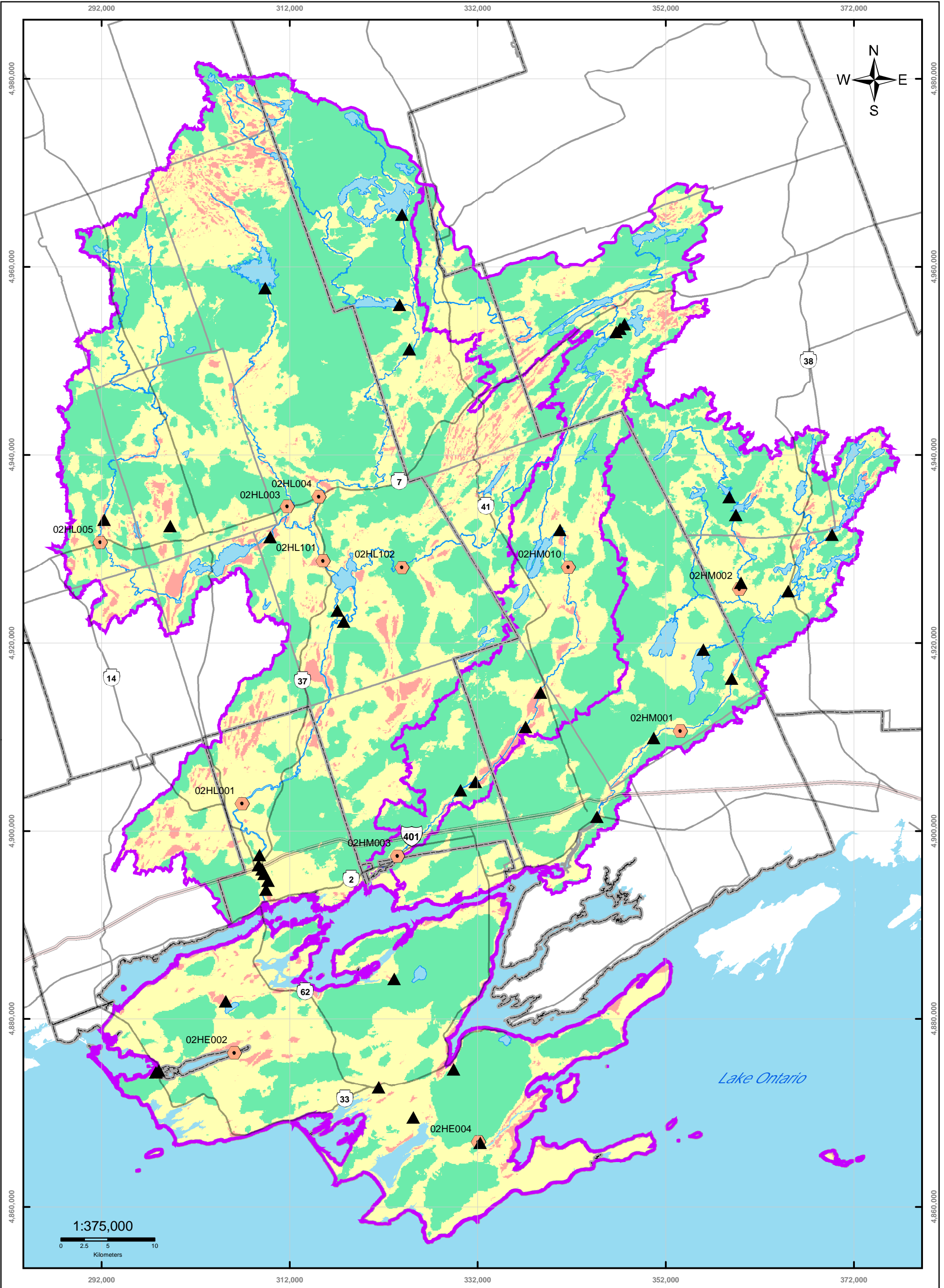
**QUINTE CONSERVATION**  
 Moira River, Napanee Region and Prince Edward Region Watersheds.  
 RR # 2, 2061 Old Highway # 2, Belleville, Ontario, K8N 4Z2.  
 www.quinteconservation.ca, 613-968-3434  
 Produced by Quinte Conservation March 27 2008 under license with the Ontario Ministry of Natural Resources. Copyright Quinte Conservation and the Queen's Printer for Ontario, 2008. Data is projected in NAD 83  
 UTM Zone 18N.  
 Digital Mapping Sources:  
 Base Map - Ontario Ministry of Natural Resources  
 Water Table Elevation - Dillon Consulting  
 This map is for illustrative purposes only. IC makes no warranties and assumes no liability whatsoever regarding the truth, accuracy, currency, or completeness of them or its associated data.

*Legend*

- Highway 401
- Highways
- Rivers
- Lakes
- Populated Areas
- Quinte Region



# Map 11 Water Table Elevation



**QUINTE CONSERVATION**

Moro River, Napanee Region and Prince Edward Region Watersheds,  
RR # 2, 2061 Old Highway # 2, Belleville, Ontario, K8N 4Z2.  
www.quinteconservation.ca, 613-968-3434

Produced by Quinte Conservation March 27 2008 under license with the  
Ontario Ministry of Natural Resources. Copyright Quinte Conservation and  
the Queen's Printer for Ontario, 2008. Data is projected in NAD 83  
UTM Zone 18N.

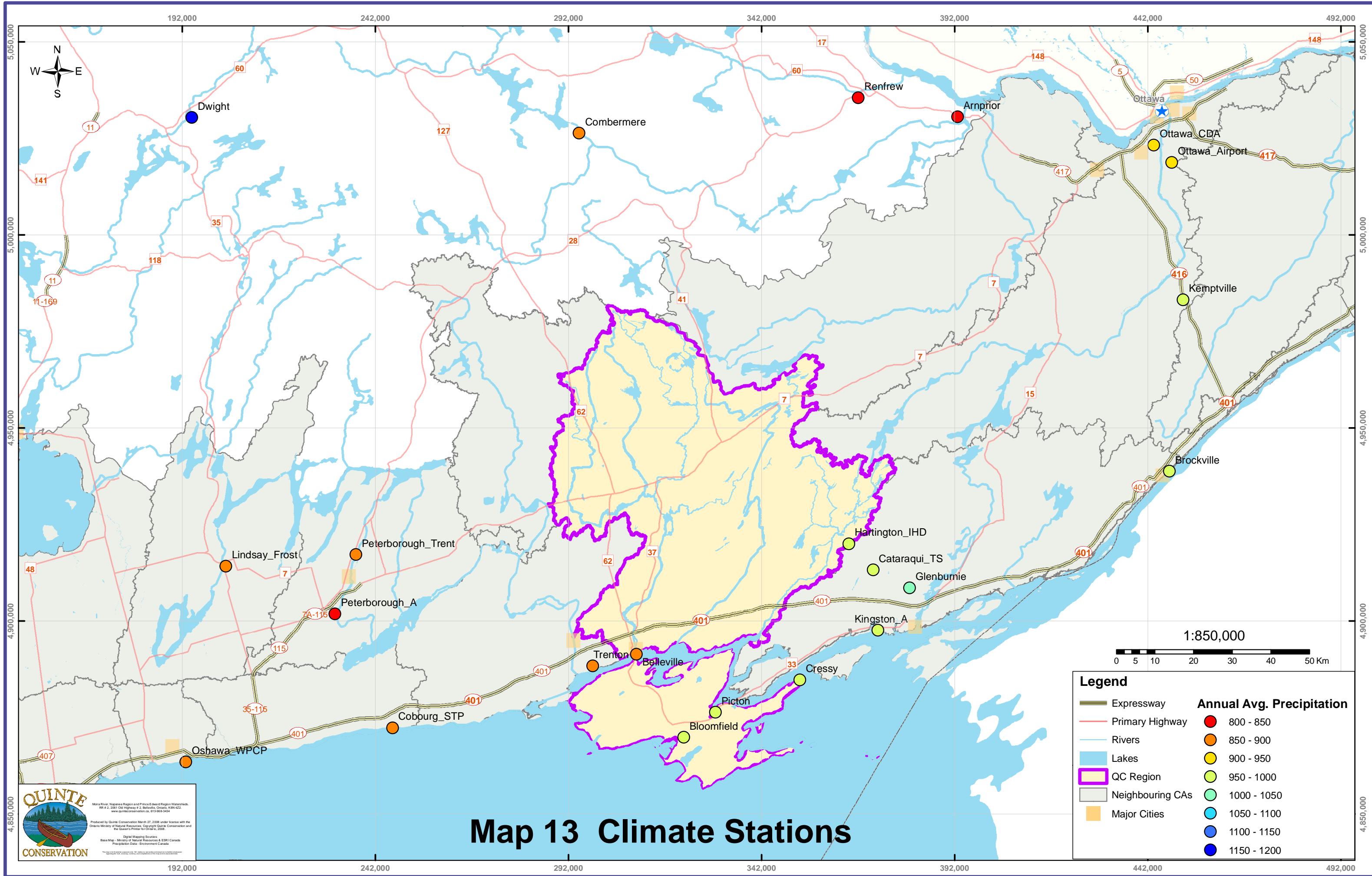
Digital Mapping Sources:  
Base Map - Ministry of Natural Resources  
Hydrology - Dillon Consulting Inc., Groundwater Study 2004

This map is for illustrative purposes only. QC makes no warranty and assumes no liability in whatever regarding the truth,  
accuracy, or completeness of this map or the associated data.

*Legend*

▲ QC Dams	— Highways	□ QC Region	■ Discharge <-5m
● Stream Gauge Stations	— Rivers	□ County Boundaries	■ Transitional -5m~5m
— Highway 401	■ Lakes	□ Township Boundaries	■ Recharge >5m

# Map 12 Significant Hydrologic Features



# Map 13 Climate Stations



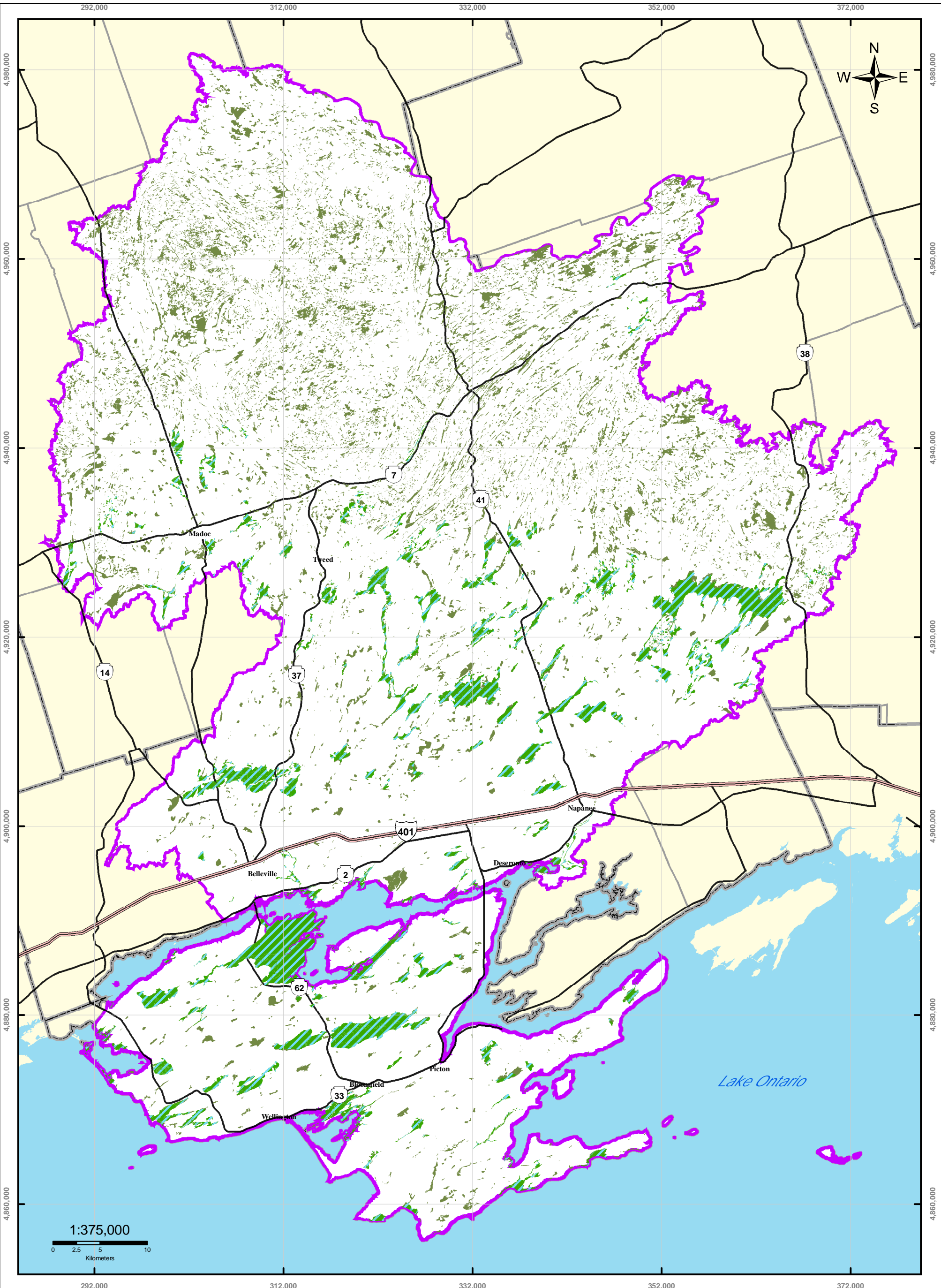
**Legend**

- Expressway
- Primary Highway
- Rivers
- Lakes
- QC Region
- Neighbouring CAs
- Major Cities

**Annual Avg. Precipitation**

- 800 - 850
- 850 - 900
- 900 - 950
- 950 - 1000
- 1000 - 1050
- 1050 - 1100
- 1100 - 1150
- 1150 - 1200

1:850,000  
 0 5 10 20 30 40 50 Km



**QUINTE CONSERVATION**

Moro River, Napanee Region and Prince Edward Region Watersheds.  
 RR # 2, 2061 Old Highway # 2, Belleville, Ontario, K8N 4Z2.  
 www.quinteconservation.ca, 613-968-3434

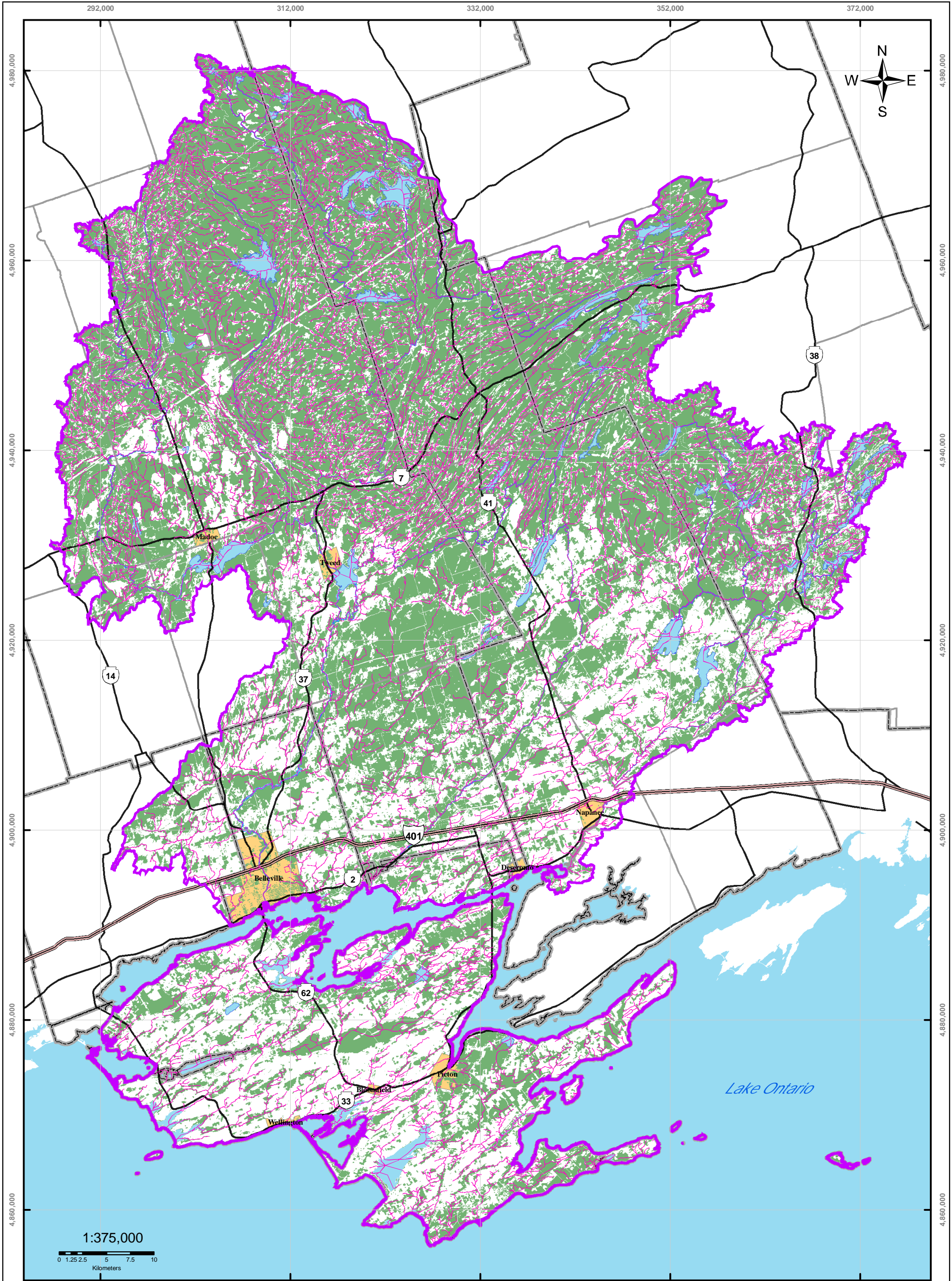
Produced by Quinte Conservation March 27, 2008 under license with the Ontario Ministry of Natural Resources. Copyright Quinte Conservation and the Queen's Printer for Ontario, 2008. Data is projected in NAD 83 UTM Zone 18N.

Digital Mapping Sources:  
 Base Map & Wetlands - Ministry of Natural Resources  
 Drinking Water Intakes - Ministry of the Environment

*Legend*

- Highway 401
- Lakes
- County Boundaries
- Unclassified Wetland
- Highways
- Populated Areas
- QC Region
- Provincial Significant Wetland
- Rivers
- Township Boundaries

# Map 14 Wetland Areas



**QUINTE CONSERVATION**

Moira River, Napanee Region and Prince Edward Region Watersheds.  
 RR # 2, 2061 Old Highway # 2, Belleville, Ontario, K8N 4Z2.  
[www.quinticonservation.ca](http://www.quinticonservation.ca) 613-968-3434

Produced by Quinte Conservation March 27, 2008 under license with the Ontario Ministry of Natural Resources. Copyright Quinte Conservation and the Queen's Printer for Ontario, 2008. Data is projected in NAD 83 UTM Zone 18N.

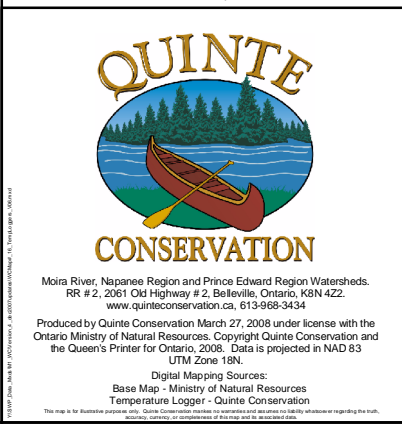
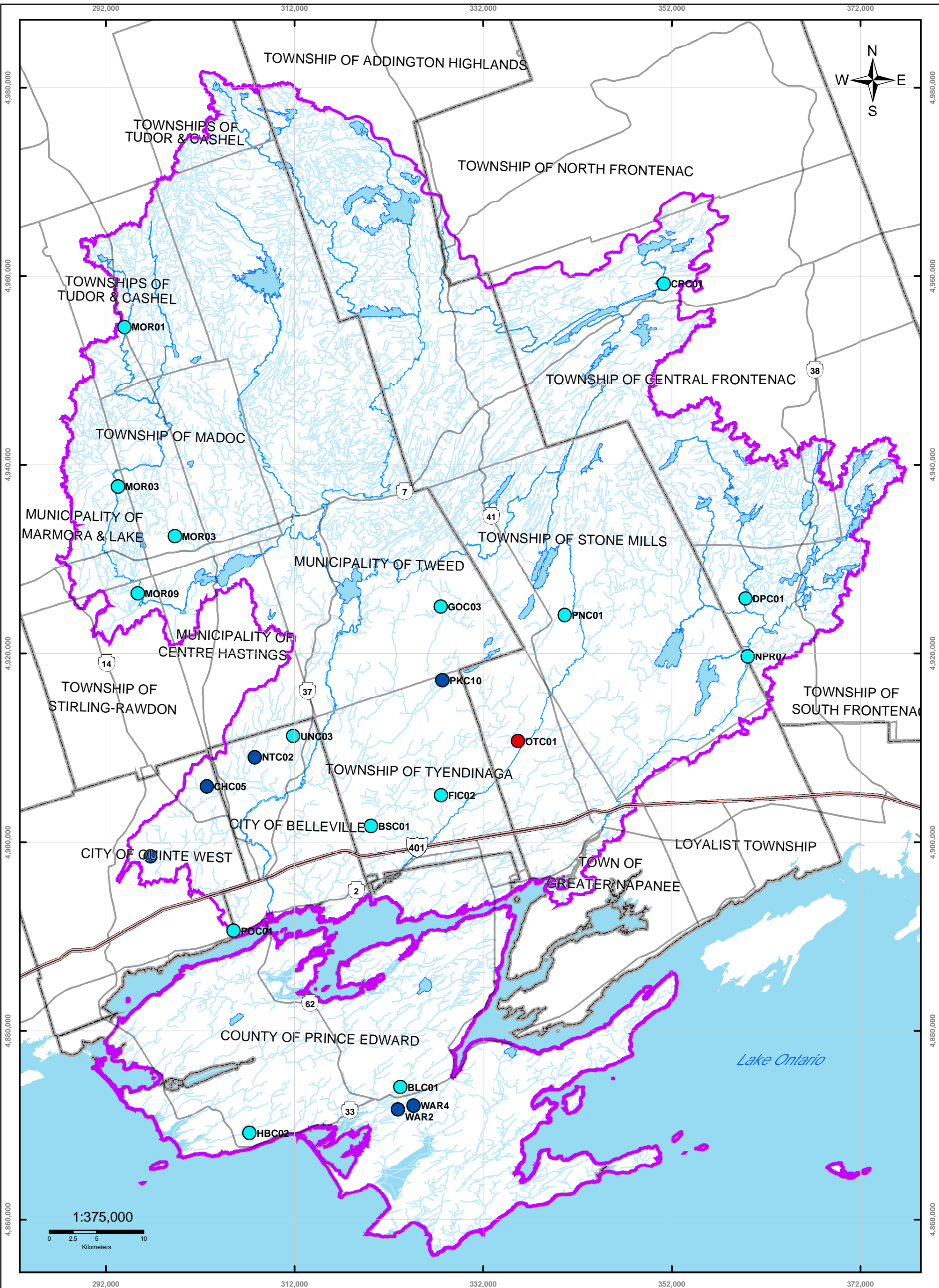
Digital Mapping Sources:  
 Base Map - Ministry of Natural Resources (MNR)  
 Naturally Vegetated Area - Derived from MNR Landcover 28  
 Stream Buffers - Derived from MNR Stream Flow data

*Legend*

- Highway 401
- Rivers
- County Boundaries
- Populated Areas
- Stream Buffer (30 meters)
- Highways
- Lakes
- Township Boundaries
- Wooded Areas

# Map 15 Woodlands & Riparian Areas

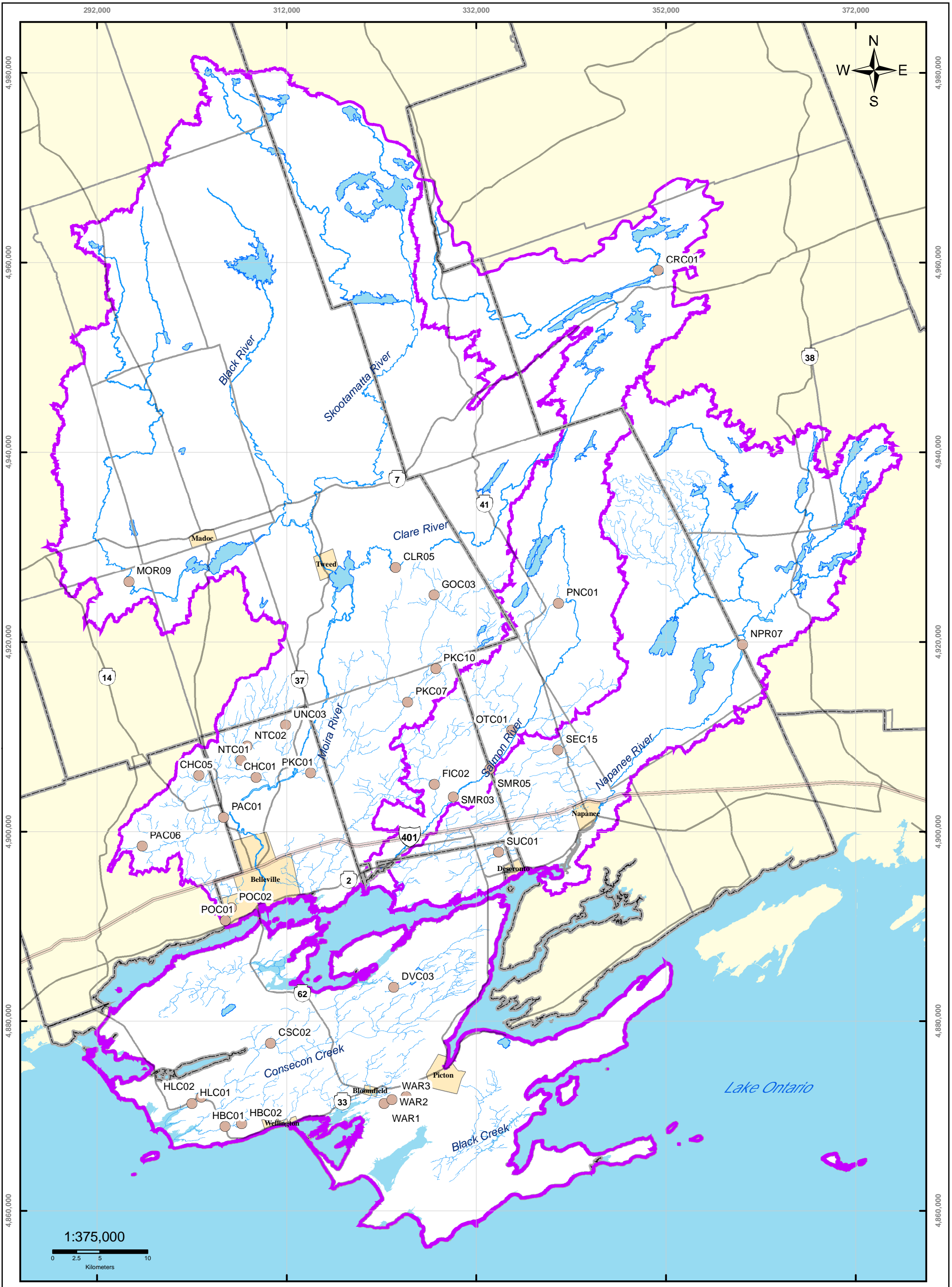
Gap



**Legend**

	Highway 401		Lakes		QC Region
	Highways		Township Boundaries		2006/2007 Avg Temp (celcius)
	Rivers		County Boundaries		<19
					19-25
					>25

# Map 16 Stream Temperature Preliminary Findings



**QUINTE**  
CONSERVATION

Moira River, Napanee Region and Prince Edward Region Watersheds.  
RR # 2, 2061 Old Highway # 2, Belleville, Ontario, K8N 4Z2.  
www.quinteconservation.ca, 613-968-3434

Produced by Quinte Conservation March 27, 2008 under license with the Ontario Ministry of Natural Resources. Copyright Quinte Conservation and the Queen's Printer for Ontario, 2008. Data is projected in NAD 83 UTM Zone 18N.

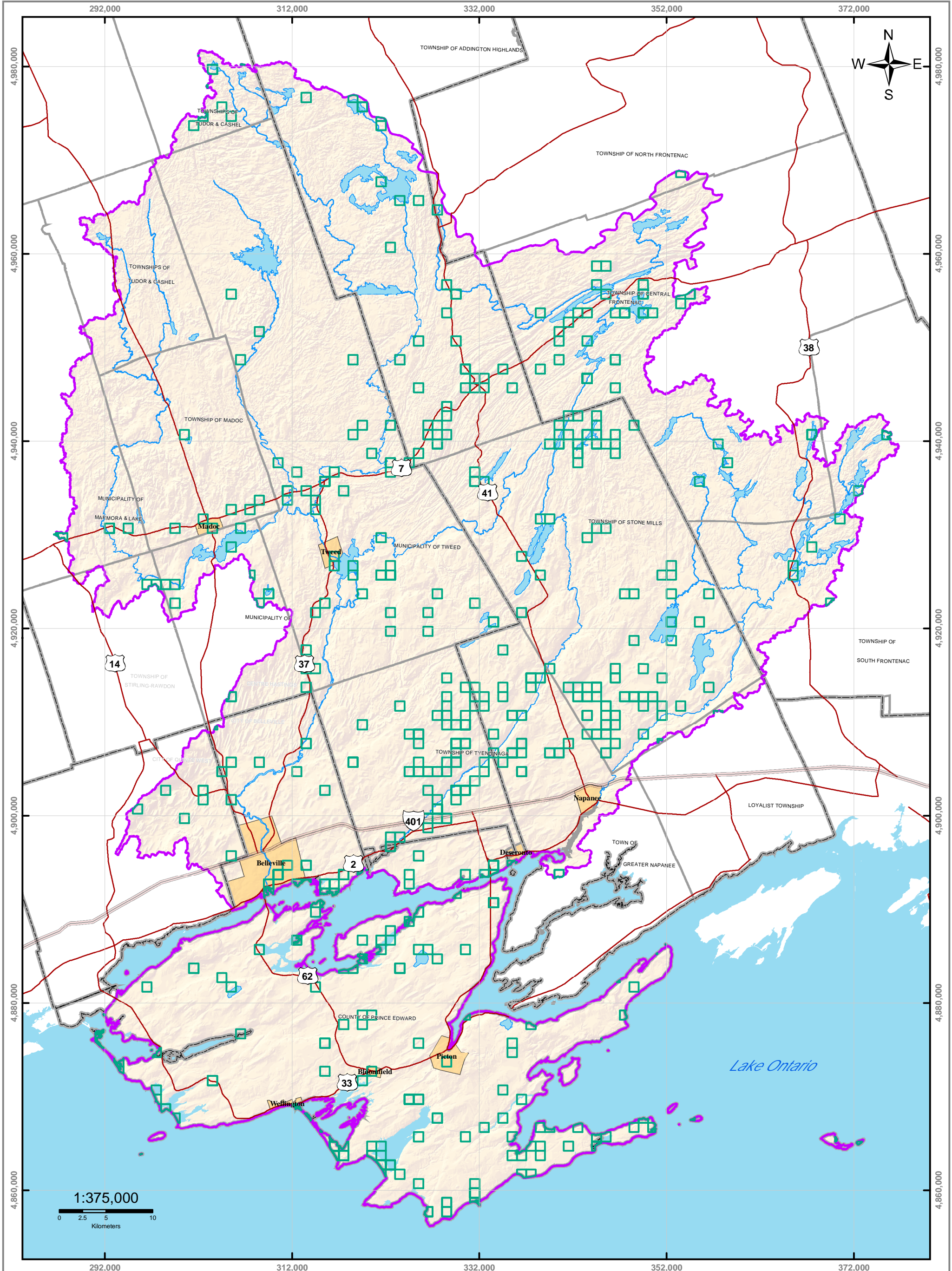
Digital Mapping Sources:  
Base Map - Ministry of Natural Resources

This map is for illustrative purposes only. QC makes no warranties and assumes no liability whatsoever regarding the truth, accuracy, currency, or completeness of this map or the associated data.

*Legend*

	OBBN Sites		Rivers		County Boundaries
	Highway 401		Lakes		Township Boundaries
	Highways		QC Region		Populated Areas

# Map 17 OBBN Sampling Sites



**QUINTE CONSERVATION**

Moira River, Napanee Region and Prince Edward Region Watersheds.  
 RR # 2, 2061 Old Highway # 2, Belleville, Ontario, K8N 4Z2  
 www.quinteconservation.ca, 613-968-3434

Produced by Quinte Conservation March 27, 2008 under license with the Ontario Ministry of Natural Resources. Copyright Quinte Conservation and the Queen's Printer for Ontario, 2008. Data is projected in NAD 83 UTM Zone 18N.

Digital Mapping Sources:  
 Base Map - Ontario Ministry of Natural Resources  
 Rare Species - Ontario Ministry of Natural Resources

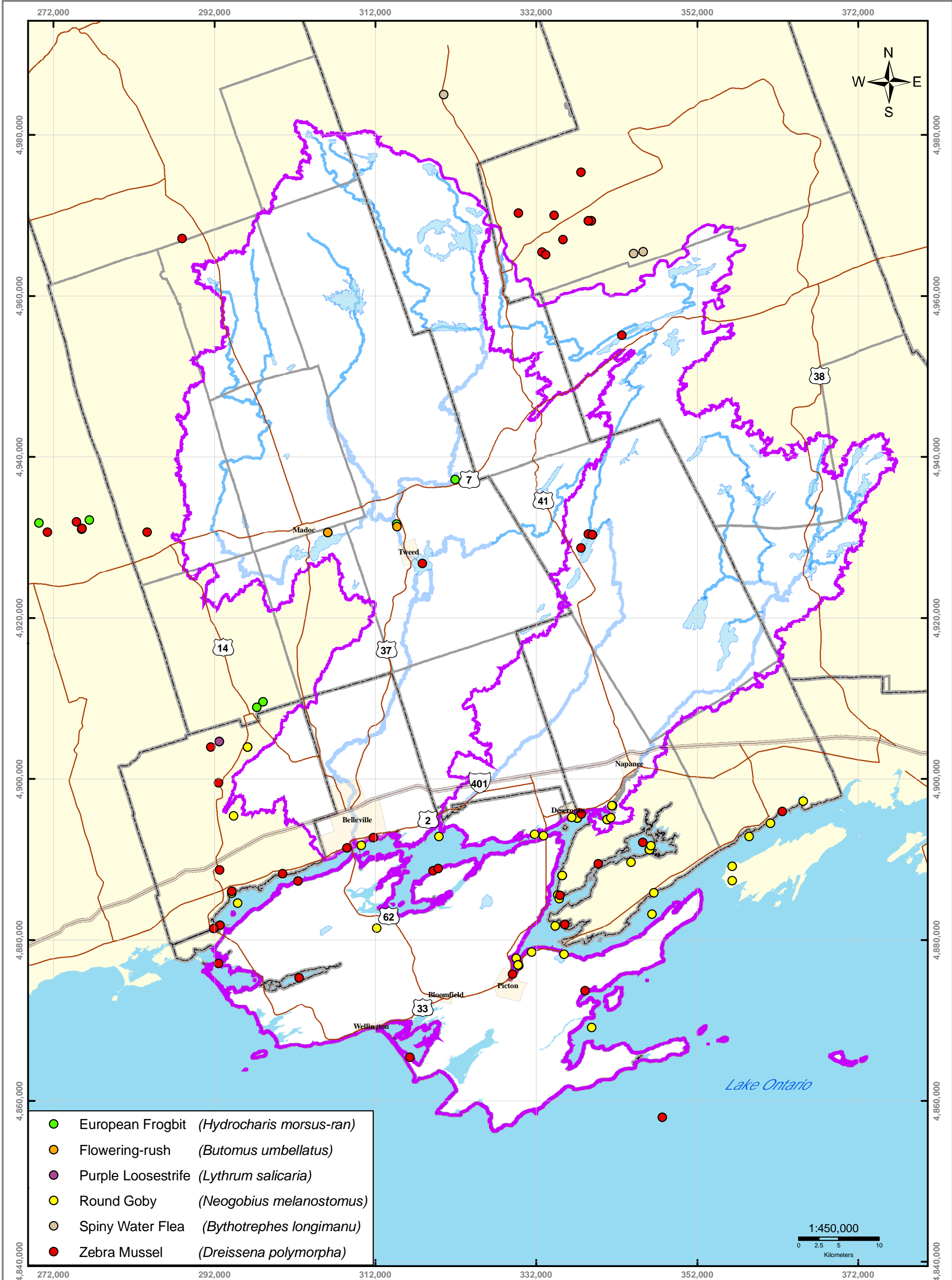
This map is for illustrative purposes only. QC makes no warranties and assumes no responsibility whatsoever regarding the truth, accuracy, currency, or completeness of this map and its associated data.

*Legend*

Highway 401	Lakes	County Boundaries
Highways	Populated Areas	Township Boundaries
Rivers	Quinte Region	Rare Species Occurrence

# Map 18 Rare Species Occurrence





- European Frogbit (*Hydrocharis morsus-ran*)
- Flowering-rush (*Butomus umbellatus*)
- Purple Loosestrife (*Lythrum salicaria*)
- Round Goby (*Neogobius melanostomus*)
- Spiny Water Flea (*Bythotrephes longimanu*)
- Zebra Mussel (*Dreissena polymorpha*)

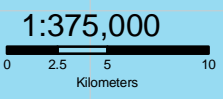
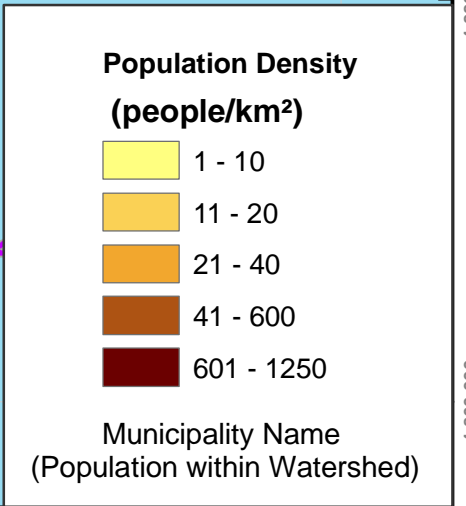
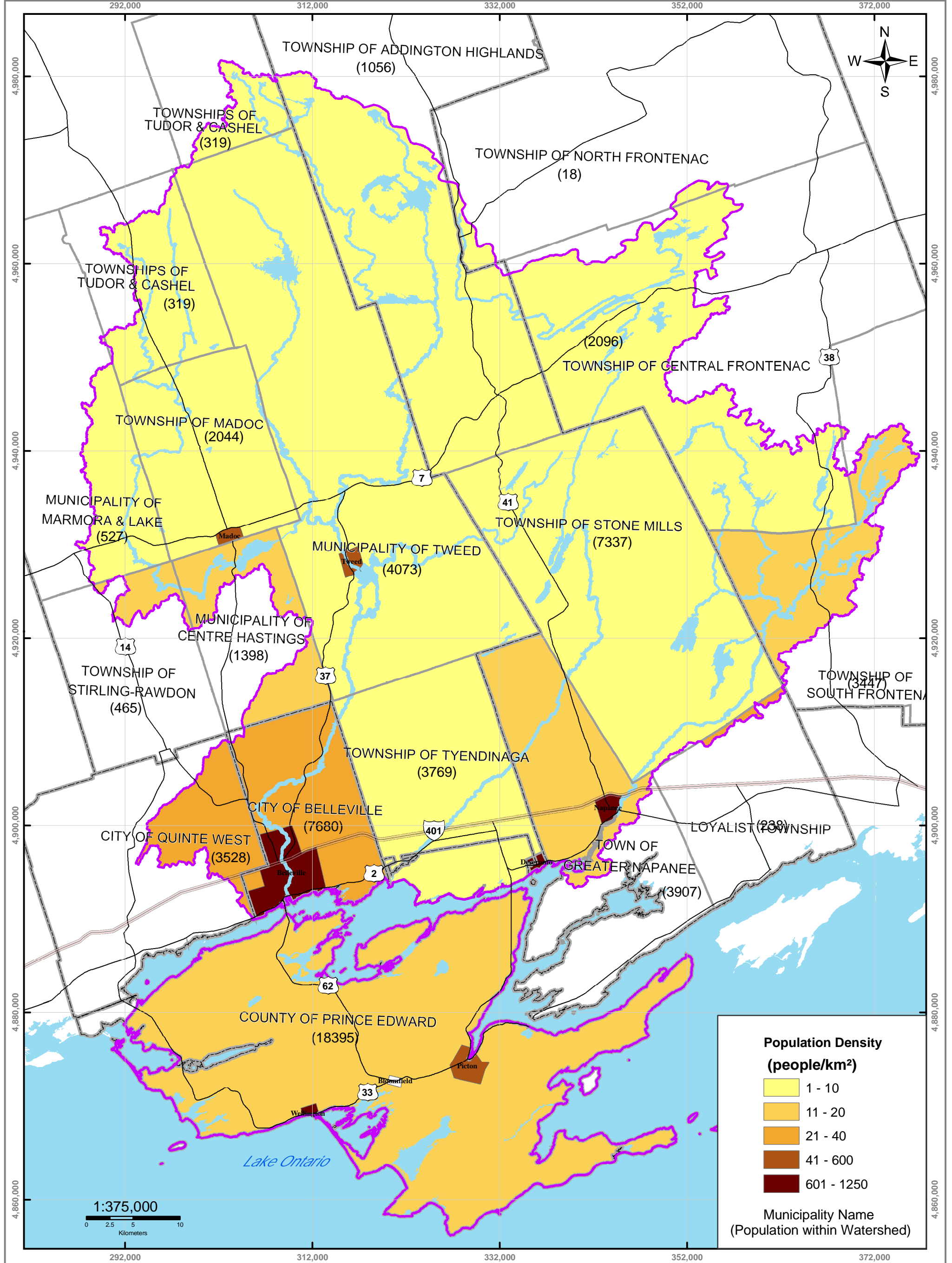


Moira River, Napanee Region and Prince Edward Region Watersheds,  
 RR # 2, 2061 Old Highway # 2, Belleville, Ontario, K8N 4Z2.  
 www.quinteconservation.ca, 613-968-3434  
 Produced by Quinte Conservation March 27, 2008 under license with the  
 Ontario Ministry of Natural Resources. Copyright Quinte Conservation and  
 the Queen's Printer for Ontario, 2008. Data is projected in NAD 83  
 UTM Zone 18N.  
 Digital Mapping Sources:  
 Base Layers - MNR  
 Invasive Species - OFAH

- Legend*
- Highway 401
  - Rivers
  - County Boundaries
  - Quinte Watersheds
  - Highways
  - Lakes
  - Township Boundaries
  - Populated Areas

# Map 19 Invasive Species

## In and Around the Quinte Region



*Legend*

- Highway 401
- Rivers
- Quinte Region
- Township Boundaries
- Highways
- Lakes
- County Boundaries

# Map 20 Population Density

Produced by Quinte Conservation March 27, 2008 under license with the Ontario Ministry of Natural Resources. Copyright Quinte Conservation and the Queen's Printer for Ontario, 2008. Data is projected in NAD 83 UTM Zone 18N.

Digital Mapping Sources:  
 Base Map - Ministry of Natural Resources  
 Population Data - Statistics Canada

This map is for illustrative purposes only. QC makes no warranties and assumes no liability whatsoever regarding the truth, accuracy, currency, or completeness of this map or the associated data.