

Moira River, Napanee Region
and Prince Edward Region Watersheds.
RR # 2, 2051 Old Highway # 2,
Belleville, Ontario, K8N 4Z2.
www.quinteconservation.ca, 613-968-3434

Legend

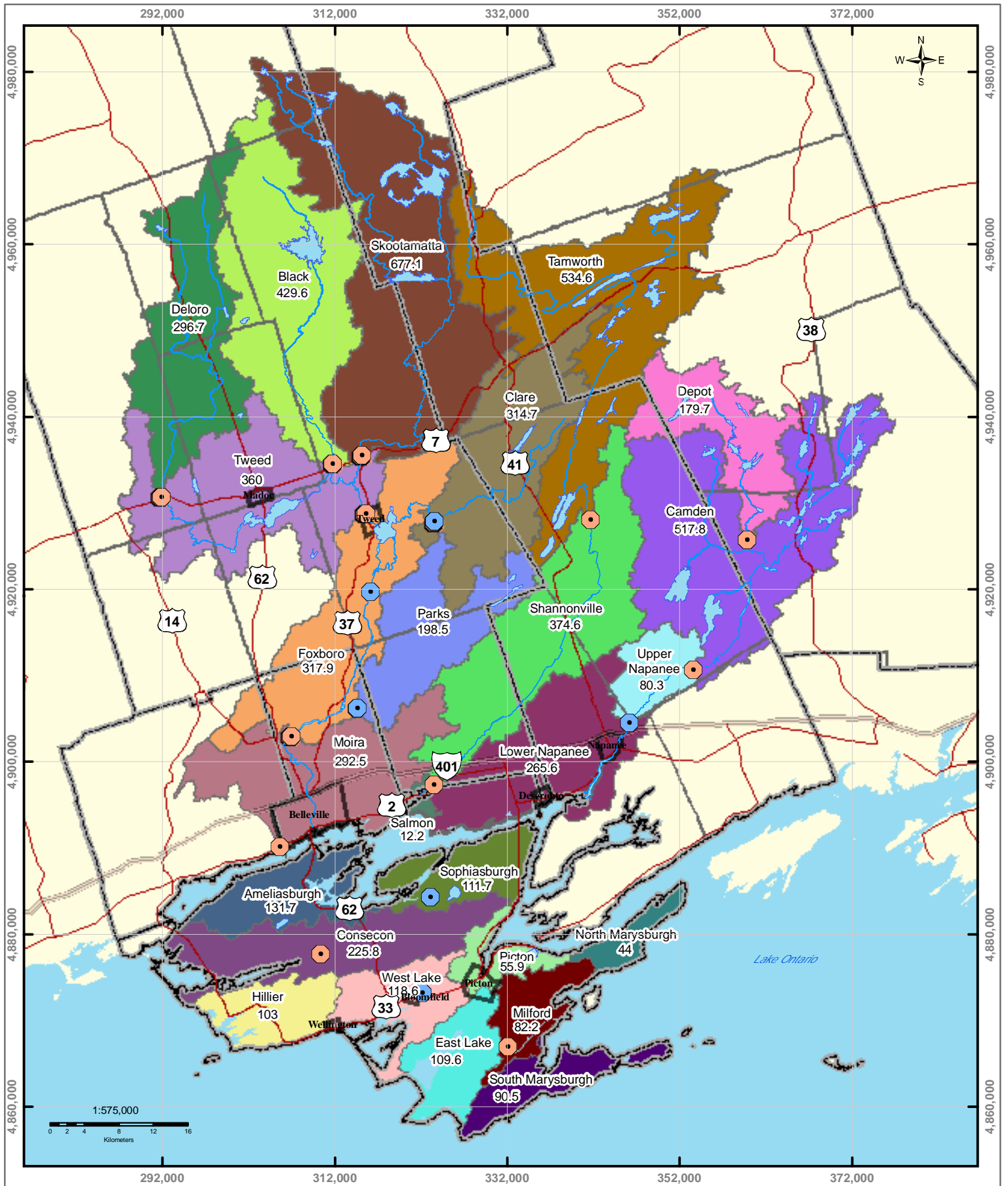
- | | | | |
|-----------------------|-------------------|-------------------|---------------------|
| Surface Water Intakes | Municipal Wells | Rivers | Populated Areas |
| Great Lakes Intake | Highway 401 | Lakes | Township Boundaries |
| Highways | Quinte Watersheds | County Boundaries | |

Figure 2.1 Quinte Source Protection Region & Drinking Water Systems

DISCLAIMER:
The information conveyed by this map is regional in nature and is not suitable for use in site specific evaluations.

Produced by Quinte Conservation under license with the Ontario Ministry of Natural Resources. Copyright Quinte Conservation and the Queen's Printer for Ontario, 2008. Data is projected in NAD 83 UTM Zone 18N.

DIGITAL MAPPING SOURCES:
Digital Mapping Sources:
Base Map - Ontario Ministry of Natural Resources
Surface Water Intakes - Ontario Ministry of the Environment
Municipal Wells - Dilton Consulting



Moira River, Napanee Region
and Prince Edward Region Watersheds
R.R. # 2, 2061 Old Highway # 2
Belleville, Ontario, K2N 4Z2
www.quintecconservation.ca, 613-968-3434

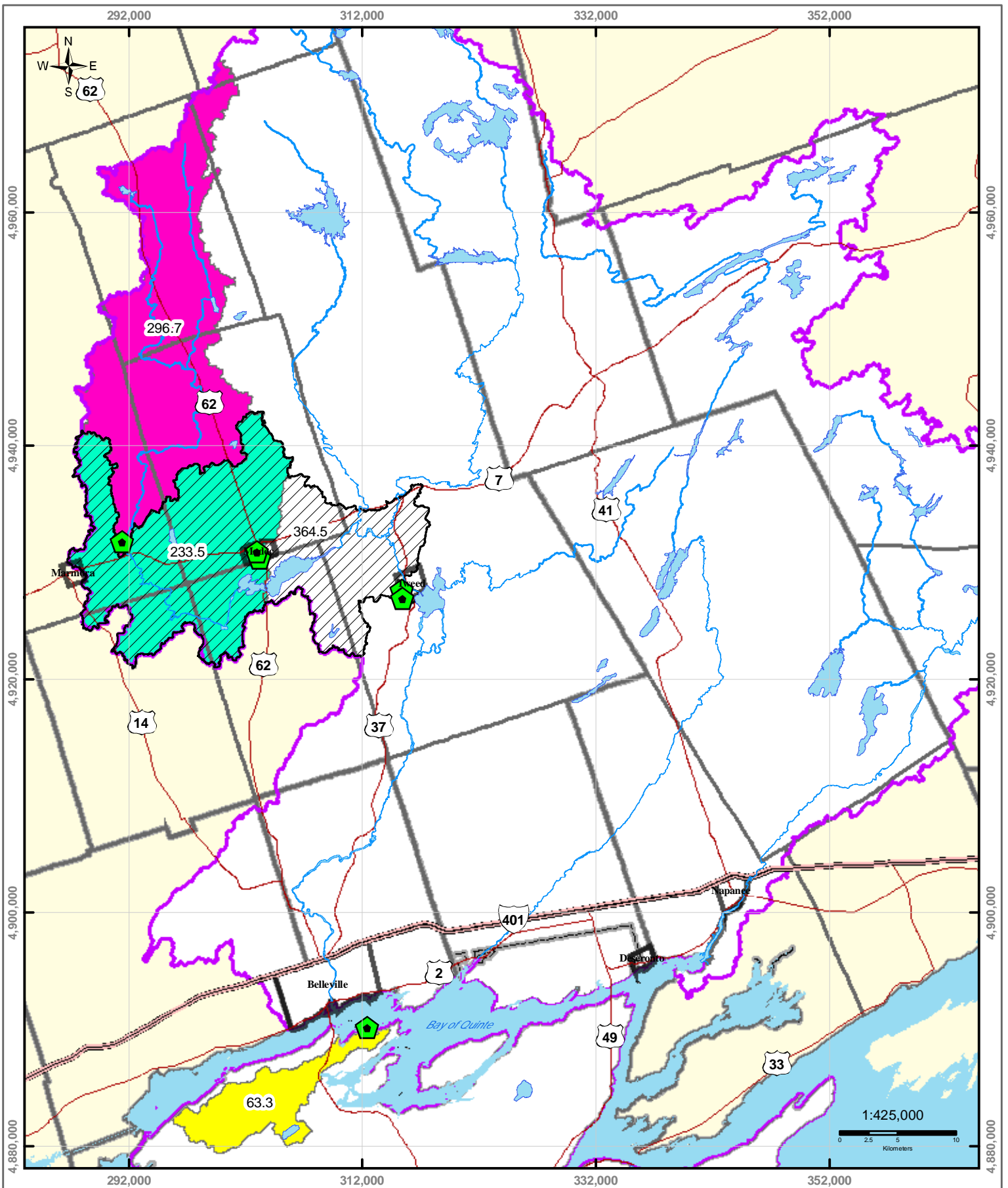
- Legend*
- Inactive Gauges
 - Highway 401
 - Rivers
 - Active Stream Gauges
 - Highways
 - Lakes

DISCLAIMER:
The information conveyed by this map is regional in nature and is not suitable for use in site-specific evaluations.

Produced by Quinte Conservation under license with the Ontario Ministry of Natural Resources. Copyright Quinte Conservation and the Queen's Printer for Ontario, 2006. Data is projected in NAD 83 UTM Zone 18N.

DIGITAL MAPPING SOURCES:
Base Map - Ontario Ministry of Natural Resources Subcatchments - Derived using ArcHydro Gauge Locations - Water Survey of Canada

Figure 4.1 Surface Water Catchments & Subwatersheds



Legend

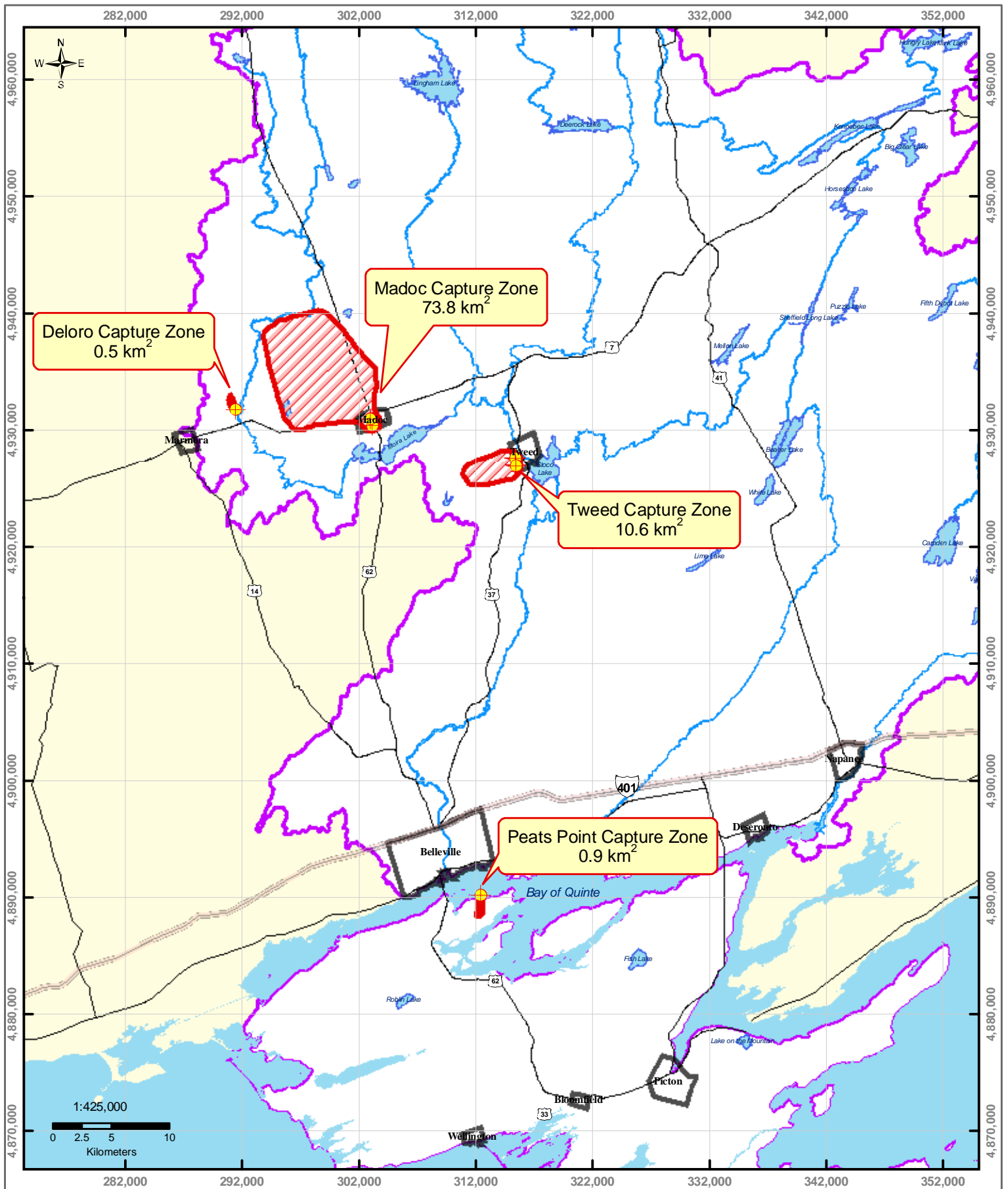
- Municipal Wells
- Rivers
- Ameliasburgh
- Deloro
- Quinte Region
- Highways
- Lakes
- Madoc
- Tweed
- Highway 401
- *areas in square kilometers

DISCLAIMER:
 The information conveyed by this map is regional in nature and is not suitable for use in site specific evaluations.

Produced by Quinte Conservation under license with the Ontario Ministry of Natural Resources. Copyright Quinte Conservation and the Queen's Printer for Ontario, 2008.
 Data is projected in NAD 83 UTM Zone 18N.

DIGITAL MAPPING SOURCES:
 Base Map - Ontario Ministry of Natural Resources Subcatchments - Derived using ArcHydro Gauge Locations - Water Survey of Canada

Figure 4.2 Municipal Well Surface Watersheds



Quinte Conservation
 Moira River, Napanee Region
 and Prince Edward Region Watersheds
 RR # 2, 2061 Old Highway # 2
 Belleville, Ontario, K8N 4Z2
 www.quinteconservation.ca, 613-969-3434

Legend

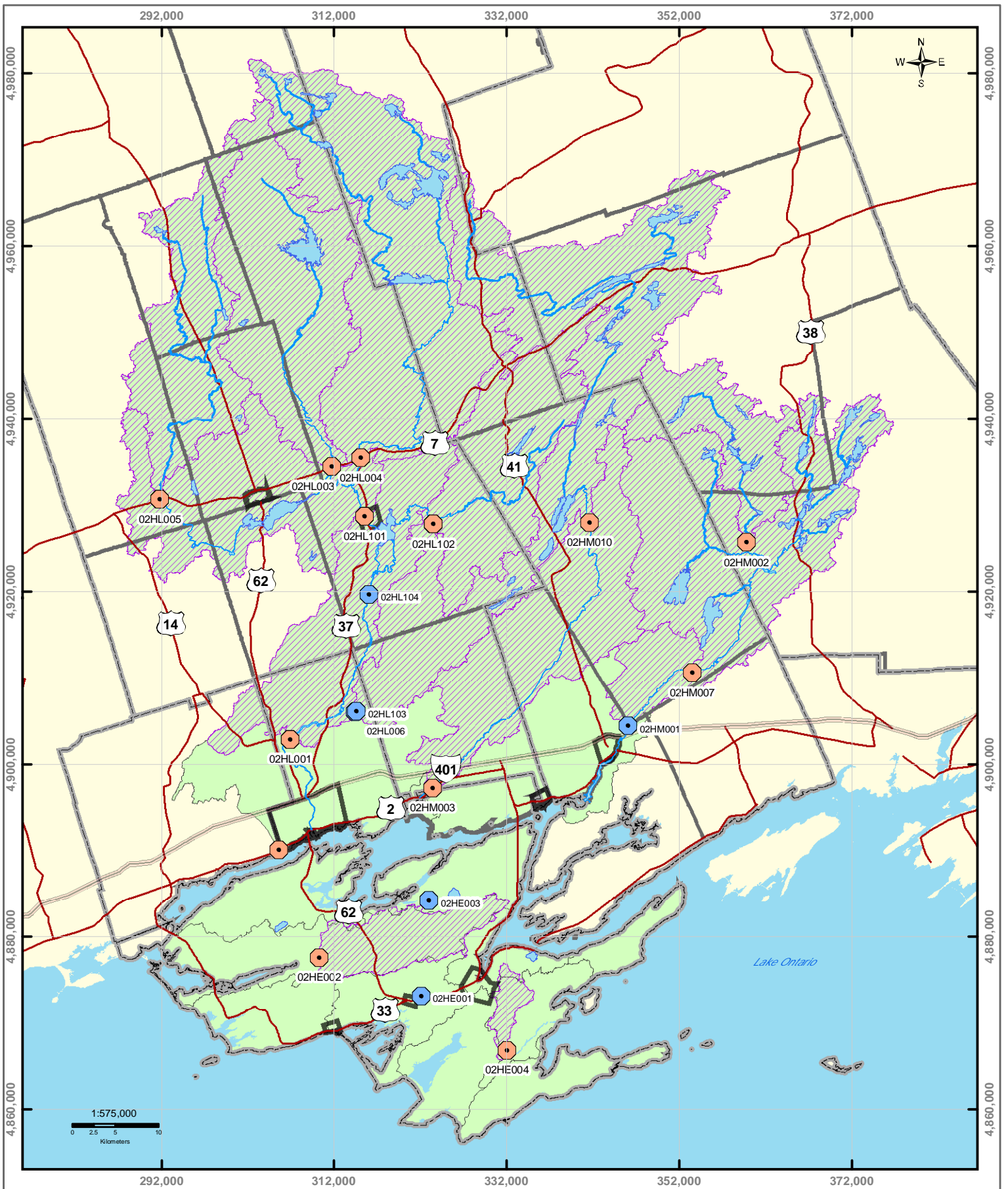
- Municipal Wells
- Highways
- Lakes
- Populated Areas
- Highway 401
- Rivers
- Capture Zones
- Quinte Region

DISCLAIMER:
 The information conveyed by this map is regional in nature and is not suitable for use in site specific evaluations.

Produced by Quinte Conservation under license with the Ontario Ministry of Natural Resources. Copyright Quinte Conservation and the Queen's Printer for Ontario, 2008. Data is projected in NAD 83 UTM Zone 18N.

DIGITAL MAPPING SOURCES:
 Base Map - Ontario Ministry of Natural Resources
 Municipal Well Locations - Dillon Consulting

Figure 4.3 Municipal Well Groundwater Capture Zones



Moira River, Napanee Region
and Prince Edward Region Watersheds
RR # 2, 2061 Old Highway # 2,
Belleville, Ontario, K8N 4Z2.
www.quinteconservation.ca, 613-969-3434

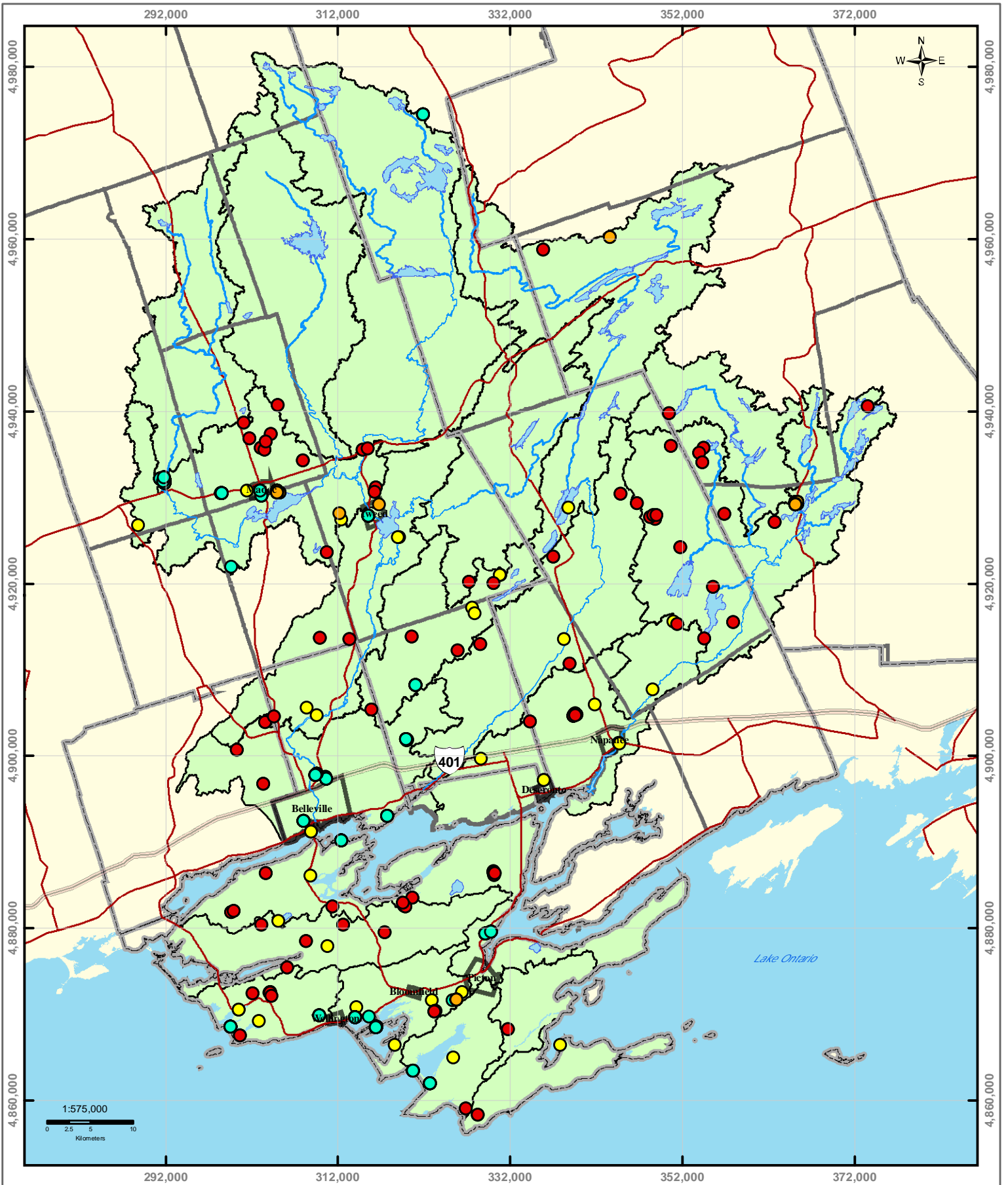
- Legend*
- Active Stream Gauges
 - Inactive Gauges
 - Gauged Catchments
 - Rivers
 - Lakes
 - Highways
 - Highway 401

Figure 4.4 Stream Gauges and Catchments

DISCLAIMER:
The information conveyed by this map is regional in nature and is not suitable for use in site-specific evaluations.

Produced by Quinte Conservation under license with the Ontario Ministry of Natural Resources. Copyright Quinte Conservation and the Queen's Printer for Ontario, 2005. Data is projected in NAD 83 UTM Zone 18N.

DIGITAL MAPPING SOURCES:
Base Map - Ontario Ministry of Natural Resources
Subcatchments - Derived using ArcHydro



Moira River, Napanee Region
and Prince Edward Region Watersheds
RR # 2, 2061 Old Highway # 2,
Belleville, Ontario, K8N 4Z2.
www.quinteconservation.ca, 613-969-3434

Legend

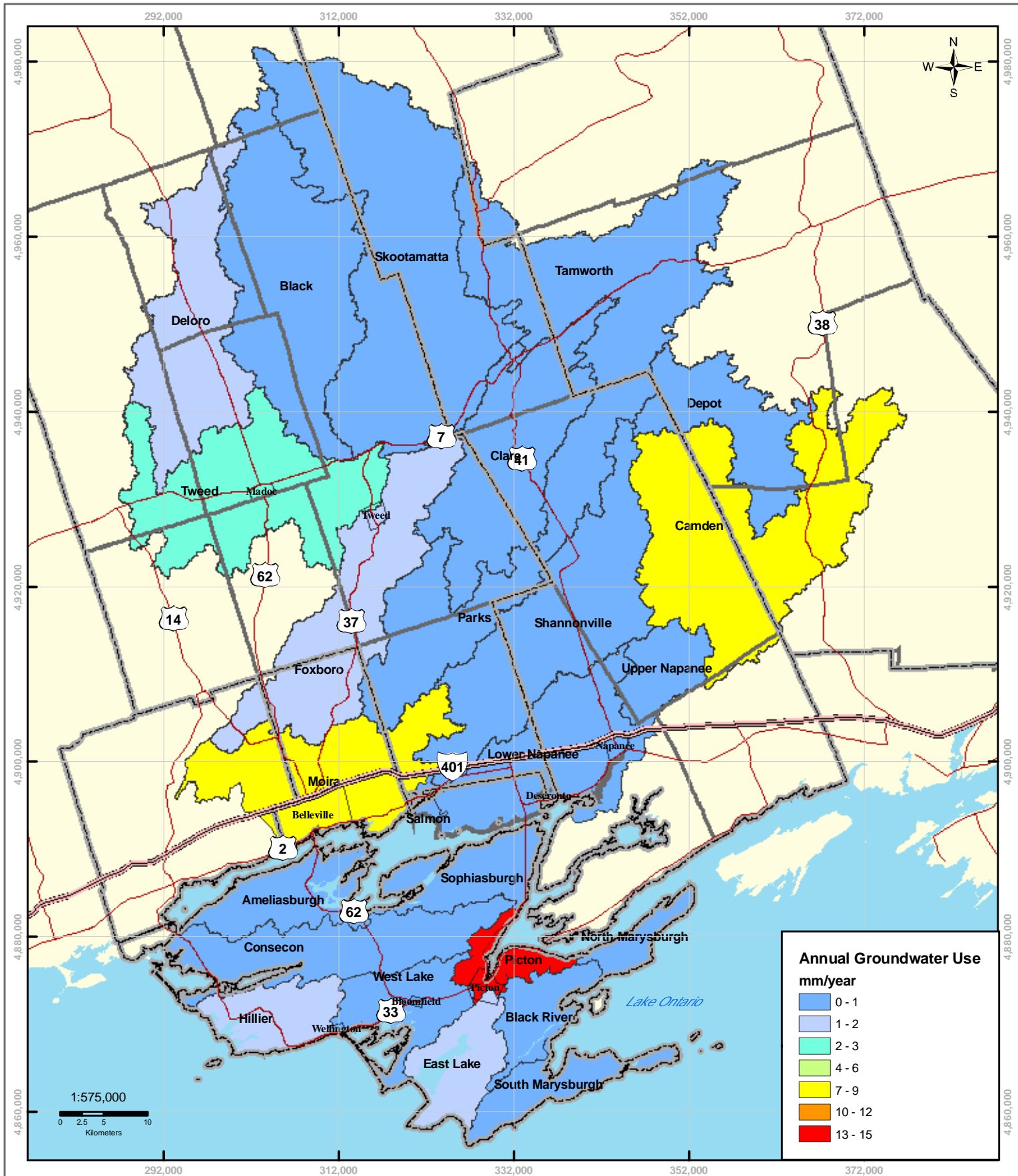
- | | | | | |
|---|--|-------------|--------|----------------------------|
| ● Groundwater Permits | ● Both | Highway 401 | Rivers | Flow Monitoring Catchments |
| ● Surface Water | ● Wetland Permits | Highways | Lakes | |

Figure 6.1 Permit to Take Water Locations

DISCLAIMER:
The information conveyed by this map is regional in nature and is not suitable for use in site specific evaluations.

Produced by Quinte Conservation under license with the Ontario Ministry of Natural Resources. Copyright Quinte Conservation and the Queen's Printer for Ontario, 2006. Data is projected in NAD 83 UTM Zone 18N.

DIGITAL MAPPING SOURCES:
Base Map - Ontario Ministry of Natural Resources
Digital Elevation Model - Ministry of Natural Resources
Subcatchments - Derived using ArcHydro



Moira River, Napanee Region
and Prince Edward Region Watersheds
RR # 2, 2061 Old Highway # 2,
Bellefleur, Ontario, K0N 4Z2
www.quinteconservation.ca, 613-968-3434

Legend

- Highway 401
- Highways
- Populated Areas
- County Boundaries
- Township Boundaries

Figure 6.5
Annual Subwatershed Groundwater Use (mm/year)

DISCLAIMER:
The information conveyed by this map is regional in nature and is not suitable for use in site specific evaluations.
Produced by Quinte Conservation under license with the Ontario Ministry of Natural Resources. Copyright Quinte Conservation and the Queen's Printer for Ontario, 2008.
Data is projected in NAD 83 UTM Zone 18N.

DIGITAL MAPPING SOURCES:
Base Map - Ontario Ministry of Natural Resources

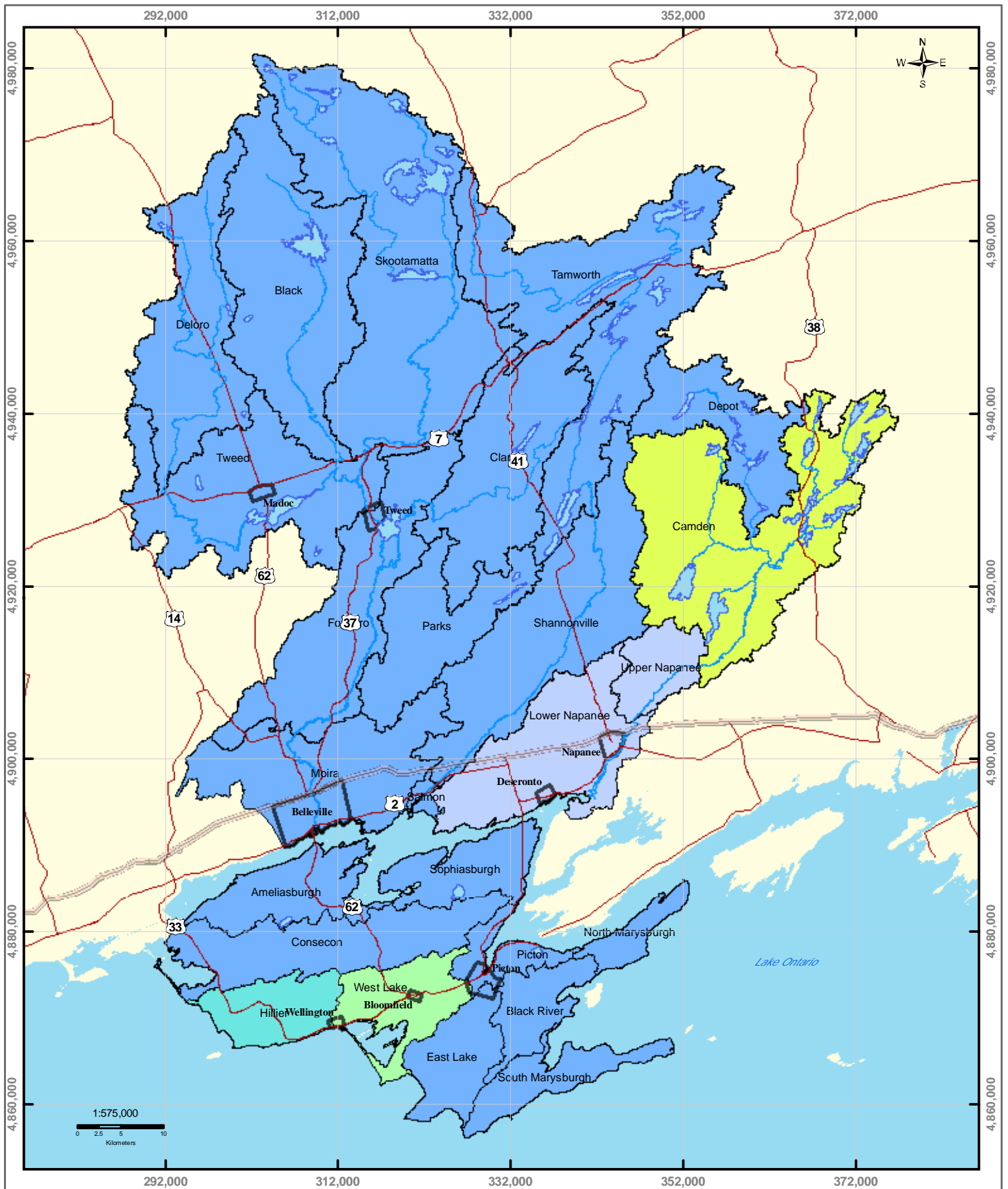


Figure 6.6
Annual Subwatershed Surface Water Use (mm/year)



Legend

- Highway 401
- Highways
- Populated Areas
- 0-1
- 1-2
- 2-3
- 3-4
- 4-6

DISCLAIMER:
 The information conveyed by this map is regional in nature and is not suitable for use in site specific evaluations.

Produced by Quinte Conservation under license with the Ontario Ministry of Natural Resources. Copyright Quinte Conservation and the Queen's Printer for Ontario, 2006. Data is projected in NAD 83 UTM Zone 18N.

DIGITAL MAPPING SOURCES:
 Base Map - Ontario Ministry of Natural Resources
 Digital Elevation Model - Ministry of Natural Resources
 Subcatchments - Derived using ArcHydro

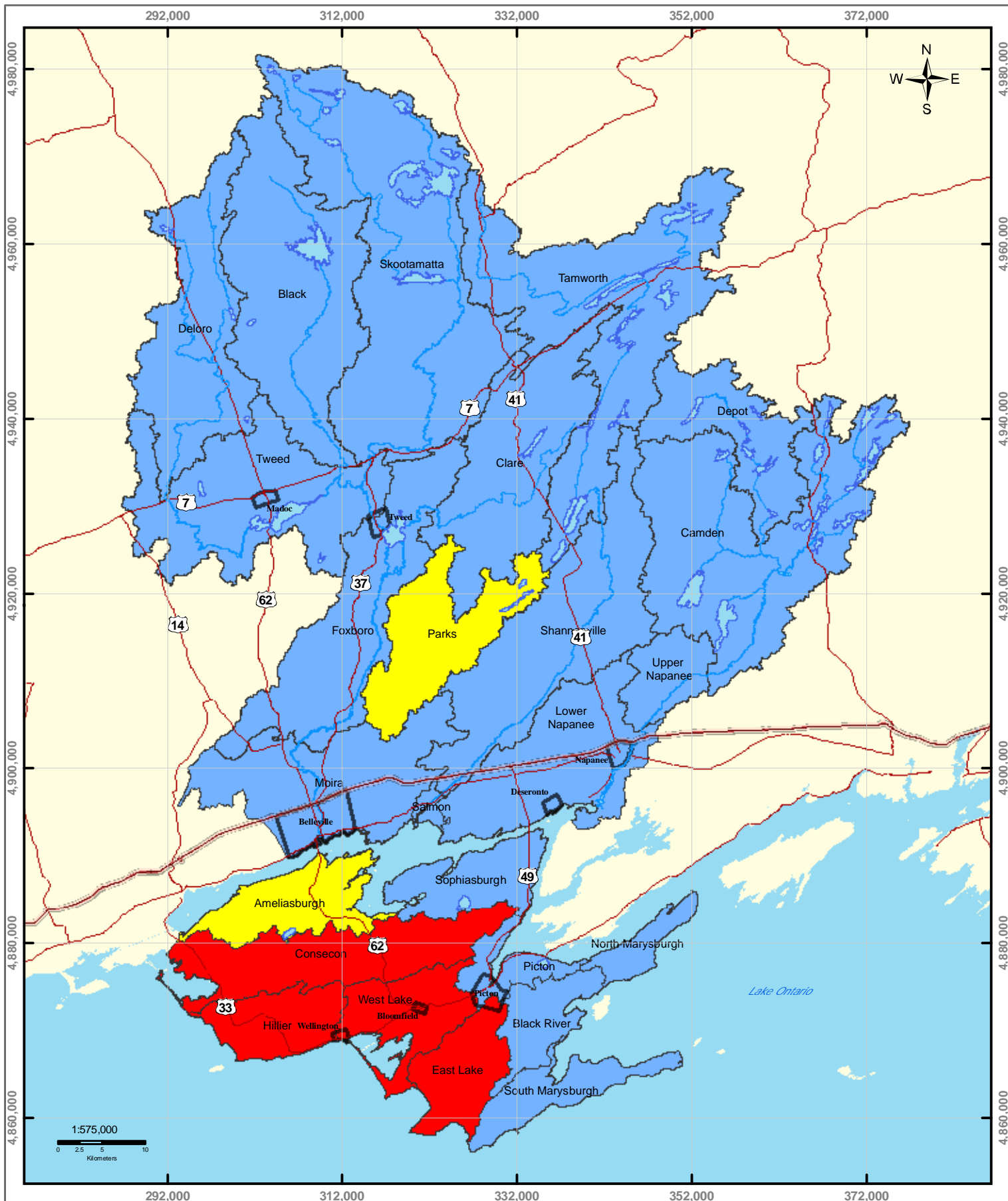


Figure 7.1
Subwatershed Percent Surface Water Demand

Legend — Highway 401 — Rivers **Percent Water Demand** — 20 - 50
 — Highways — Lakes — < 20 — >50

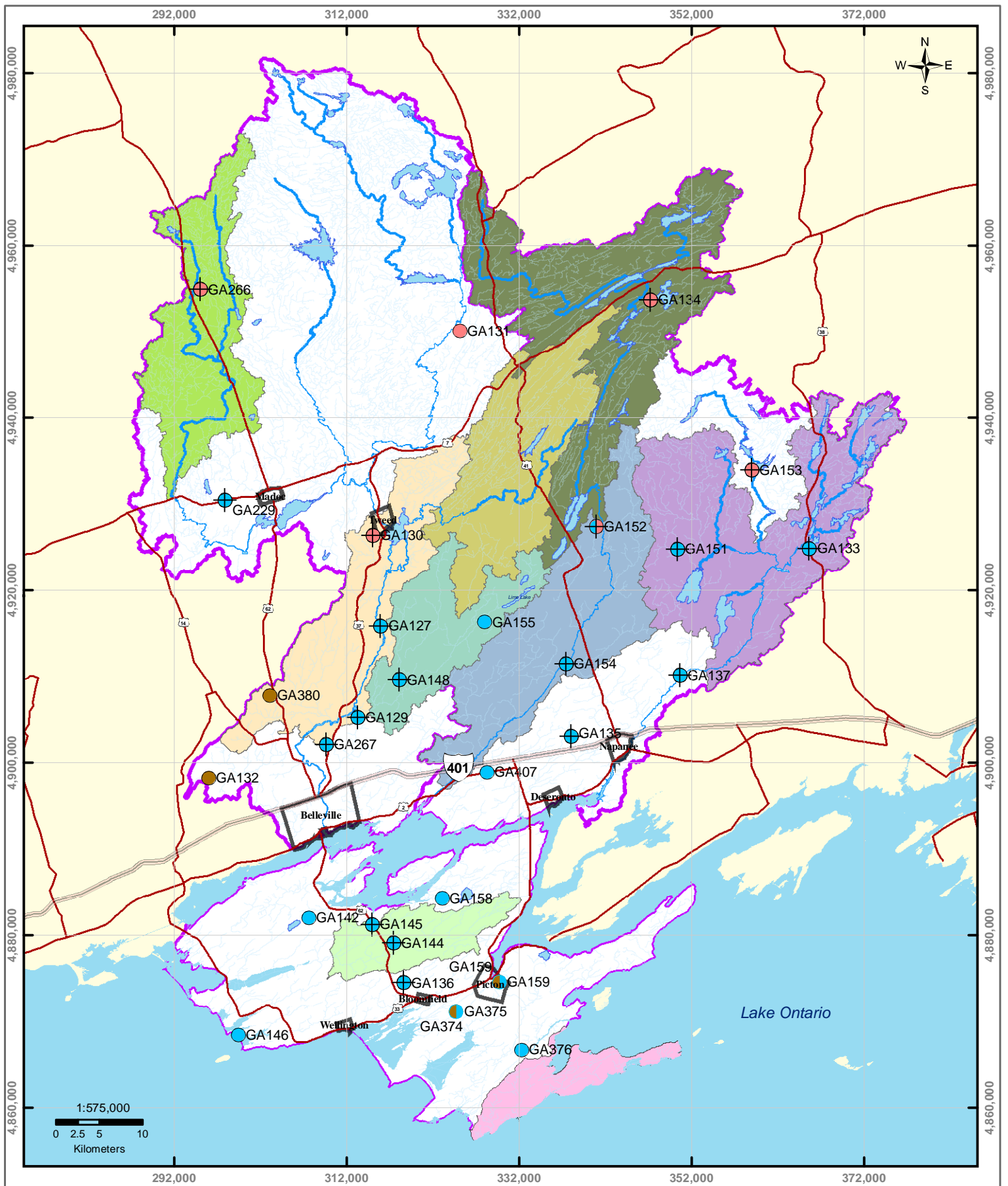
DISCLAIMER:
 The information conveyed by this map is regional in nature and is not suitable for use in site specific evaluations.

Produced by Quinte Conservation under license with the Ontario Ministry of Natural Resources. Copyright Quinte Conservation and the Queen's Printer for Ontario, 2008. Data is projected in NAD 83 UTM Zone 18N.

DIGITAL MAPPING SOURCES:
 Base Map - Ontario Ministry of Natural Resources Subcatchments - Derived using ArHydro



Moira River, Napanee Region
 and Prince Edward Region Watersheds.
 RR # 2, 2061 Old Highway # 2 -
 Belleville, Ontario, K8N 4Z2.
 www.quinteconservation.ca, 613-969-3434



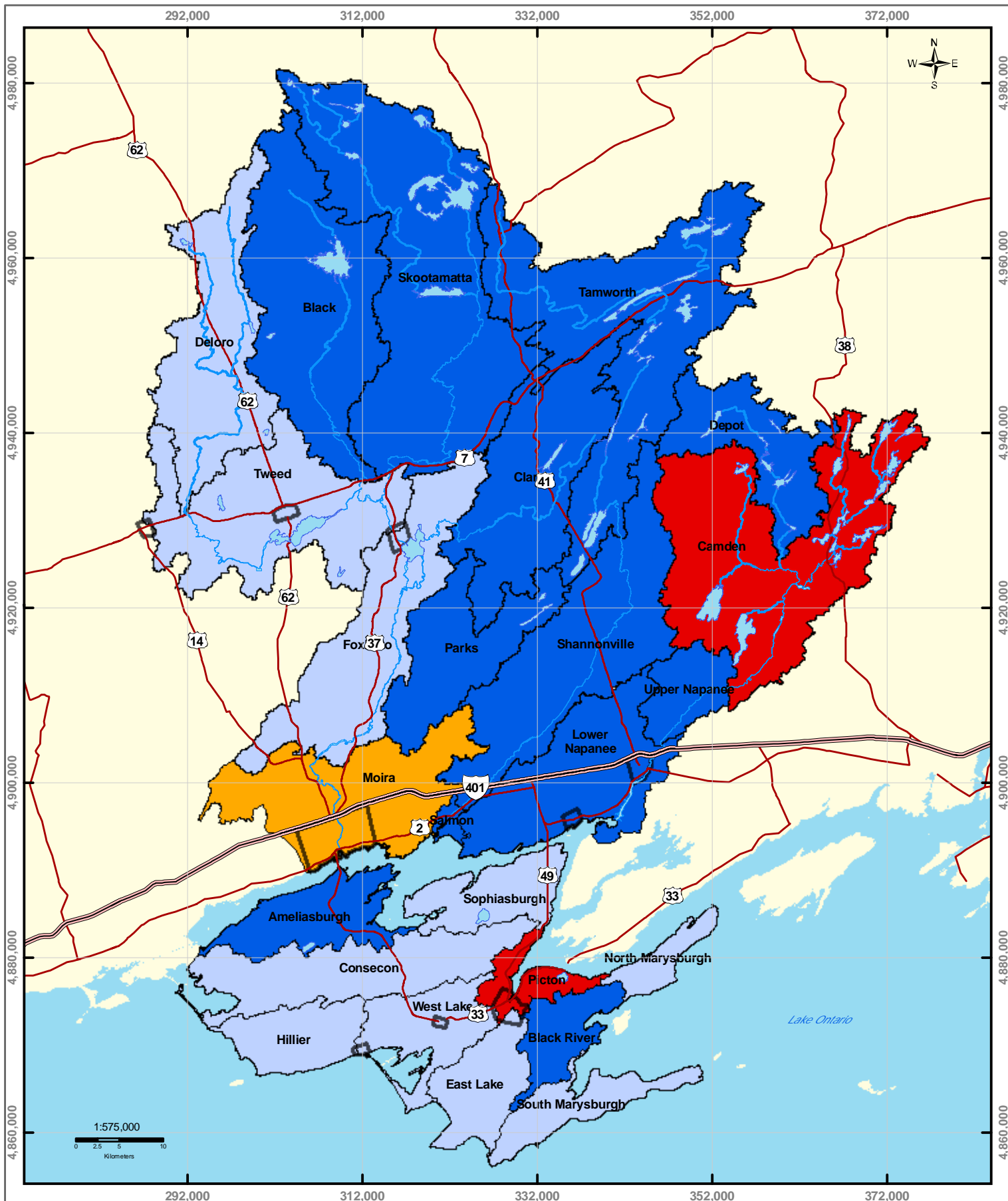
Legend	Recharge Calculation Wells	Overburden	Rivers	Deloro	Consecon
	PGMN Wells	Precambrian	Lakes	Foxboro	Tweed
	Limestone	Limestone/Precambrian	Populated Areas	Parks	Quinte Region
	Limestone	Overburden/Limestone	Highway 401	Shannonville	
		Highways	Clare	Tamworth	

Figure 8.2 Provincial Groundwater Monitoring Well Locations

DISCLAIMER:
The information conveyed by this map is regional in nature and is not suitable for use in site specific evaluations.

Produced by Quinte Conservation under license with the Ontario Ministry of Natural Resources. Copyright Quinte Conservation and the Queen's Printer for Ontario, 2005.
Data is projected in NAD 83 UTM Zone 18N.

DIGITAL MAPPING SOURCES:
Base Map - Ontario Ministry of Natural Resources
Digital Elevation Model - Ministry of Natural Resources
Subdivisions - Derived using ArcHydro



Legend

Highway 401	Rivers	Percent Water Demand	1 - 5	10 - 20
Highways	Lakes	0 - 1	5 - 10	

Figure 8.12
Subwatershed Percent Groundwater Demand (Annual)

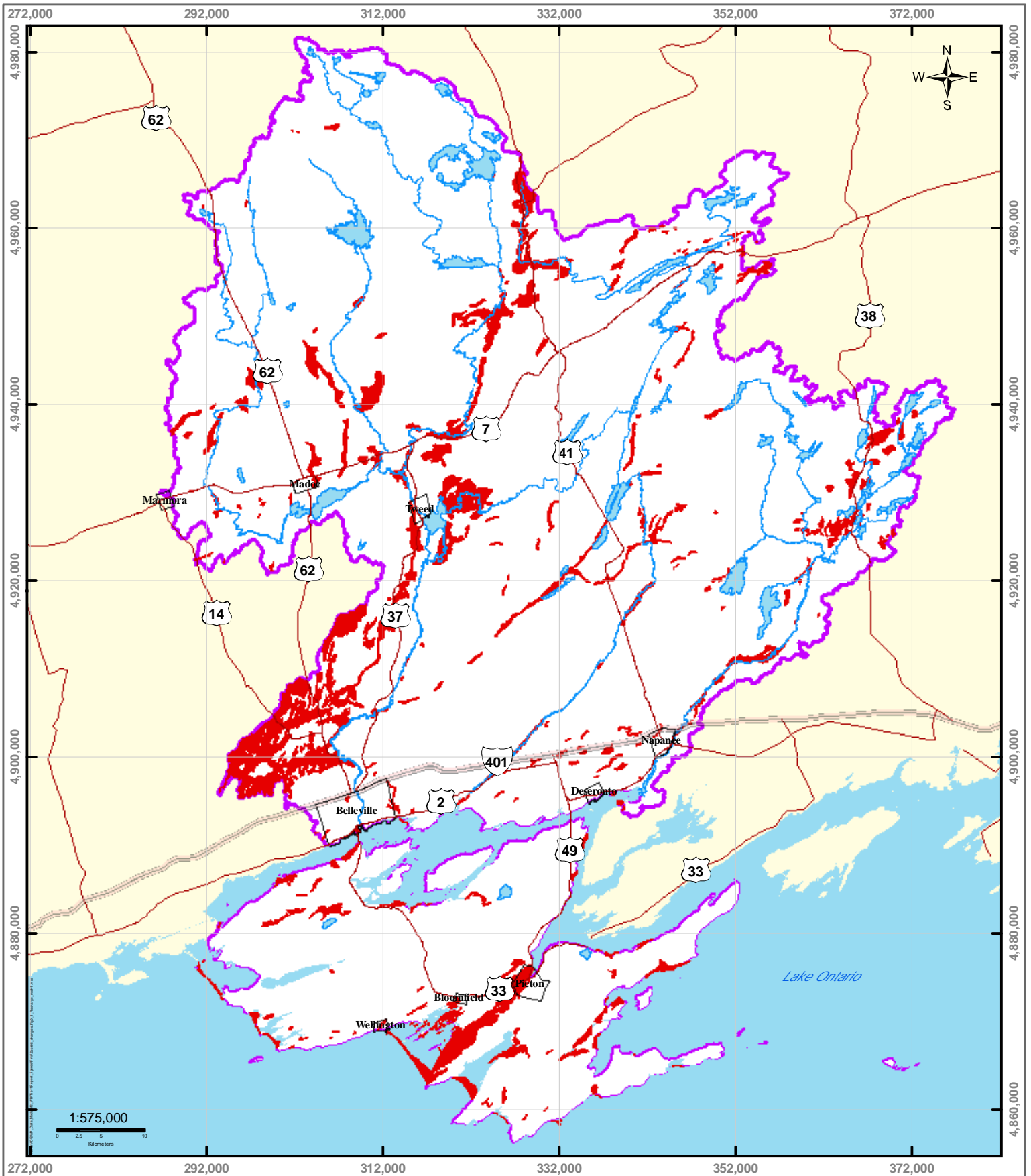
DISCLAIMER:
 The information conveyed by this map is regional in nature and is not suitable for use in site specific evaluations.

Produced by Quinte Conservation under license with the Ontario Ministry of Natural Resources. Copyright Quinte Conservation and the Queen's Printer for Ontario, 2008.
 Data is projected in NAD 83 UTM Zone 18N.

DIGITAL MAPPING SOURCES:
 Base Map - Ontario Ministry of Natural Resources
 Stress - Calculated by WHI



Moira River, Napanee Region
 and Prince Edward Region Watersheds.
 RR # 2, 2061 Old Highway # 2,
 Belleville, Ontario, K8N 4Z2.
 www.quinteconservation.ca, 613-968-3434



Moira River, Napanee Region
and Prince Edward Region Watersheds.
RR # 2, 2061 Old Highway # 2,
Belleville, Ontario, K8N 4Z2.
www.quinteconservation.ca, 613-968-3434

Legend

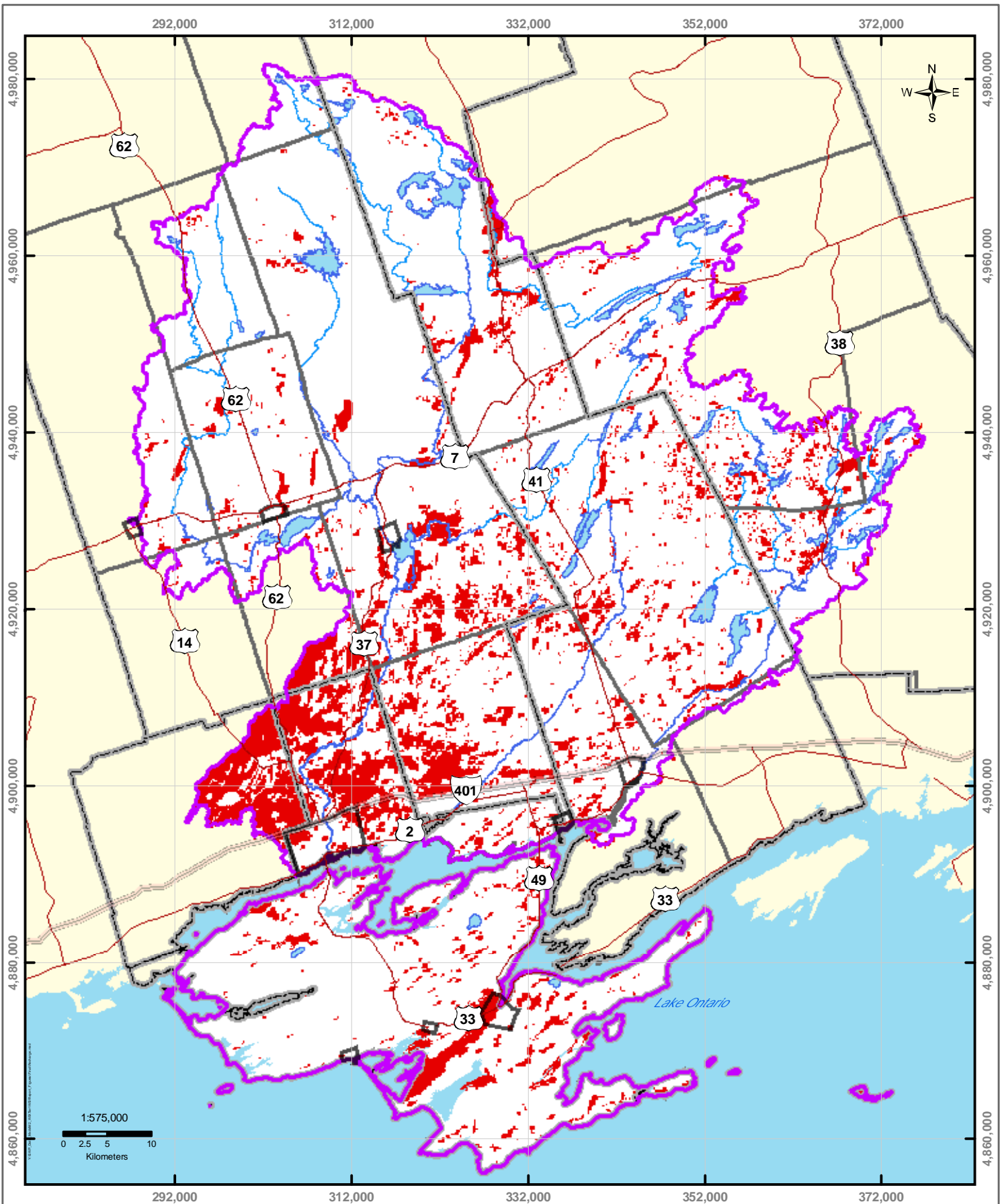
- Highway 401
- Highways
- Rivers
- Lakes
- Populated Areas
- Quinte Region
- Significant Recharge

Figure 9.1 Significant Groundwater Recharge Areas - Method 1

DISCLAIMER:
The information conveyed by this map is regional in nature and is not suitable for use in site specific evaluations.

Produced by Quinte Conservation under license with the Ontario Ministry of Natural Resources. Copyright Quinte Conservation and the Queen's Printer for Ontario, 2008. Data is projected in NAD 83 UTM Zone 18N.

DIGITAL MAPPING SOURCES:
Base Map - Ontario Ministry of Natural Resources
Recharge Area - Ministry of Natural Resources



Moira River, Napanee Region
and Prince Edward Region Watersheds.
RR # 2, 2051 Old Highway # 2,
Belleville, Ontario, K8N 4Z2.
www.quinteconservation.ca, 613-968-3434

Legend

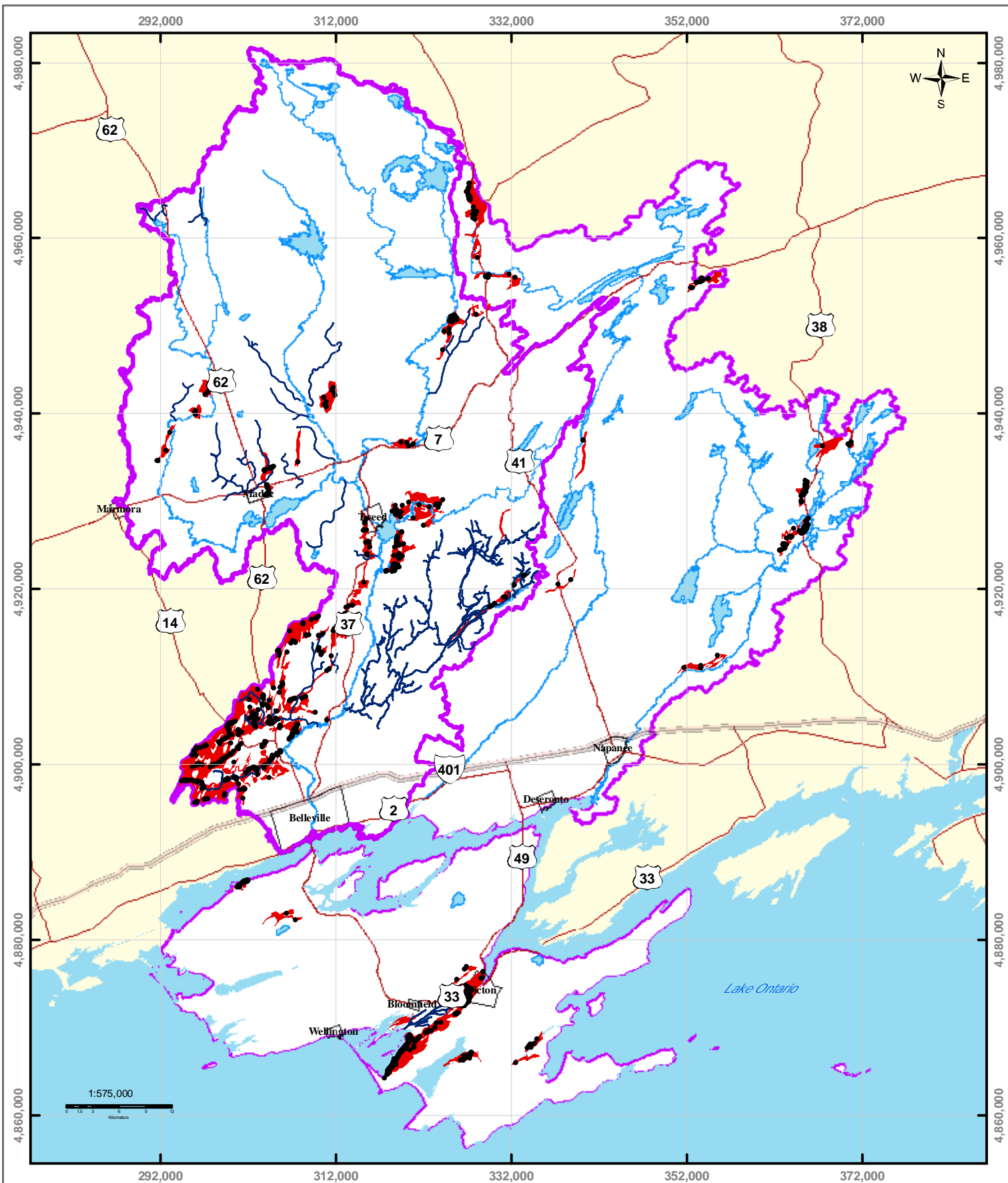
- | | | | |
|-------------|--------|-----------------|---|
| Highway 401 | Rivers | Populated Areas | Groundwater Recharge Coefficient |
| Highways | Lakes | Quinte Region | 0.275 - 0.55 |
| | | | 0.55 - 0.78 |

DISCLAIMER:
The information conveyed by this map is regional in nature and is not suitable for use in site specific evaluations.

Produced by Quinte Conservation under license with the Ontario Ministry of Natural Resources. Copyright Quinte Conservation and the Queen's Printer for Ontario, 2008. Data is projected in NAD 83 UTM Zone 18N.

DIGITAL MAPPING SOURCES:
Base Map - Ontario Ministry of Natural Resources

Figure 9.2 Significant Groundwater Recharge Areas - Method 2



Moro River, Napanee Region
and Prince Edward Region Watersheds.
RR # 2, 2061 Old Highway # 2,
Belleville, Ontario, K8N 4Z2.
www.quinteconservation.ca, 613-968-3434

Legend

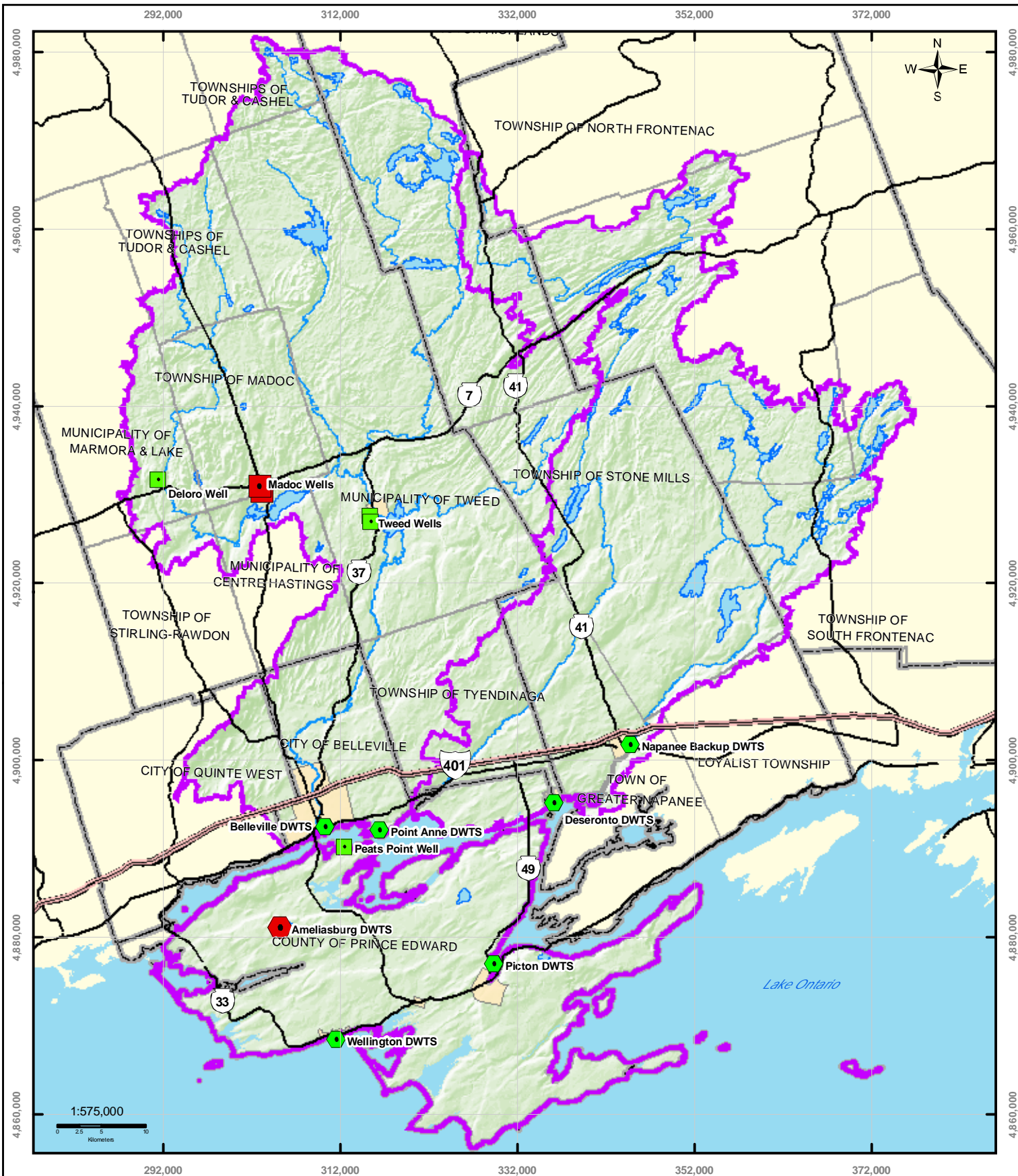
- Wells
- Coldwater Streams
- ▭ Populated Areas
- Highway 401
- Rivers
- ▭ Quinte Region
- Highways
- ▭ Lakes
- ▭ Significant Recharge Areas

Figure 9.3 Refined Significant Groundwater Recharge Areas

DISCLAIMER:
The information conveyed by this map is regional in nature and is not suitable for use in site specific evaluations.

Produced by Quinte Conservation under license with the Ontario Ministry of Natural Resources. Copyright Quinte Conservation and the Queen's Printer for Ontario, 2008. Data is projected in NAD 83 UTM Zone 18N.

DIGITAL MAPPING SOURCES:
Base Map - Ontario Ministry of Natural Resources



Mora River, Napanee Region
and Prince Edward Region Watersheds.
RR # 2, 2051 Old Highway # 2,
Belleville, Ontario, K8N 4Z2.
www.quinteconservation.ca, 613-968-3434

Legend

- | | | | |
|-------------------------|-------------------|-------------------|---------------------|
| Stress Condition | Stressed Well | Rivers | Populated Areas |
| Stressed Intake | Non Stressed Well | Lakes | Township Boundaries |
| Non Stressed Intake | Highway 401 | Quinte Watersheds | County Boundaries |

DISCLAIMER:
The information conveyed by this map is regional in nature and is not suitable for use in site specific evaluations.

Produced by Quinte Conservation under license with the Ontario Ministry of Natural Resources. Copyright Quinte Conservation and the Queen's Printer for Ontario, 2008. Data is projected in NAD 83 UTM Zone 18N.

DIGITAL MAPPING SOURCES:
Digital Mapping Sources:
Base Map - Ontario Ministry of Natural Resources
Surface Water Intakes - Ontario Ministry of the Environment
Municipal Wells - Dilton Consulting

Figure 11.1 Stress Conditions of Municipal Wells and Surface Water Intakes